

RIVER POINT SUBDIVISION

RAINBOW CITY, ETOWAH COUNTY, ALABAMA

FLAT BOOK K PAGE 112

N.W. CORNER
NW 1/4, NE 1/4
SECTION 33, T-12-S, R-6-E

STATE OF ALABAMA
COUNTY OF ETOWAH

The undersigned, David Coker Sr., does hereby ratify and adopt the within map as being true and correct. I further certify that I am the owner of and the only person having any right, title or interest in the land shown on the plat of River Point Subdivision, and that the plat represents a correct survey of the above described property made with our consent, and that the plat is hereby dedicated to the public use of the streets as shown on said plat. The easements as shown on the plat are created for the installation and maintenance of the public utility water drainage. We hereby guarantee a clear title to all the lands so dedicated from ourselves and our heirs or assigns forever, and have caused the same to be recorded from our records so that the title is clear except as shown in the abstractor's certificate.

This the 15th day of March, 2001.

By: David Coker Sr.

STATE OF ALABAMA
COUNTY OF ETOWAH

I, David Coker Sr., as Notary Public in and for said county and state, hereby certify that David Coker Sr., has signed the within map, and whom is known to me, acknowledged before me on this date, that being informed of the contents, have executed the same voluntarily on the day the same bears date.

Witness my hand and seal this the 11th day of April, 2001.

My commission expires July 9 - 2003

David Coker Sr.
A NOTARY PUBLIC

CERTIFICATE OF APPROVAL OF THE FINAL PLAT BY THE PLANNING COMMISSION

Pursuant to the Rainbow City Subdivision Regulations all the requirements for approval have been fulfilled. This final plat was given final approval by the City of Rainbow City Planning Commission on _____

Scott Skipper - Chairman DATE 4-24-01
CHIEF PLANNING COMMISSION

John S. Walker DATE 4-25-01
VOLUME BOARD OF THE CITY OF RAINBOW CITY

STATE OF ALABAMA
COUNTY OF ETOWAH
OFFICE OF PROBATE CLERK
JUDGE OF PROBATE
ETOWAH COUNTY, ALA.
CASE NO. _____

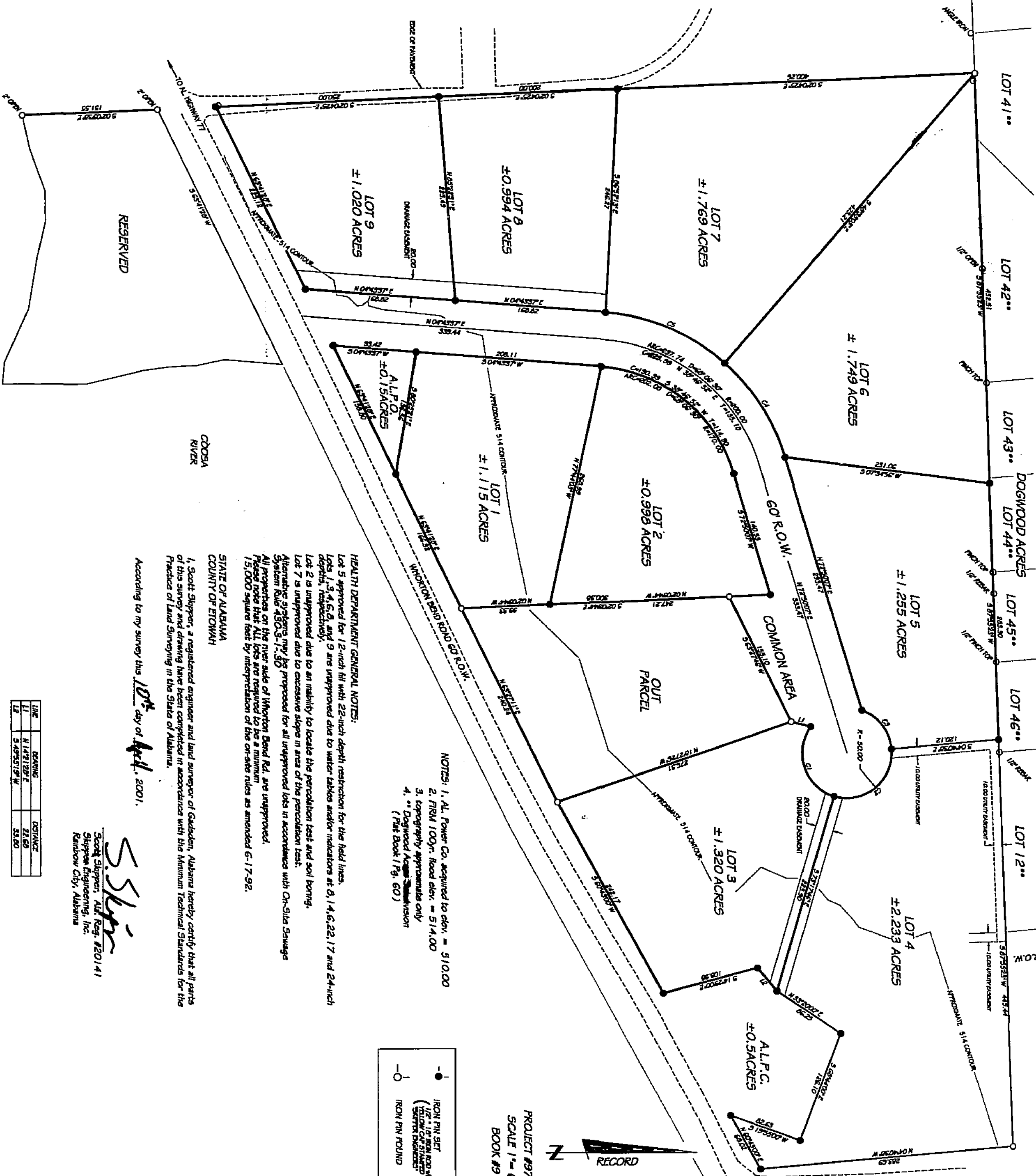
CITY COUNCIL ACCEPTANCE OF PUBLIC DEDICATION

Be it resolved by the City Council of the City of Rainbow City, Alabama, that the dedications shown on the attached plat of River Point Subdivision are hereby accepted.

Adopted by the City Council of the City of Rainbow City, Alabama
This the 24th day of April, 2001.

MAJOR: John S. Walker
ATTEN: John S. Walker
CLERK

This subdivision meets the approval of the Etowah County Health Department subject to certain conditions of approval and/or its deletions on file with the said health department, which conditions are made a part of this approval as it set out hereon.
Approved By: John S. Walker DATE 4/13/01
ETOWAH COUNTY HEALTH DEPARTMENT



HEALTH DEPARTMENT GENERAL NOTES:
Lot 5 approved for 12-inch fill with 22-inch depth restriction for the field lines.
Lots 1, 3, 4, 6, 8, and 9 are unimproved due to water tables and/or indications at 8', 1', 4', 6', 22', 17' and 24-inch depths, respectively.
Lot 2 is unimproved due to an inability to locate the population test and soil borings.
Lot 7 is unimproved due to excessive slopes in area of the population test.
All easements on the river side of Johnson Road Rd. are unimproved.
All easements on the river side of Johnson Road Rd. are unimproved.
Please note that all lots are required to be a minimum 1/5,000 square feet by interpretation of the on-site rules as amended 6-17-92.

NOTES: 1. AL Power Co. acquired to elev. = 510.00
2. TRM 100yr. flood elev. = 514.00
3. Topography approximate only
4. ** Dogwood Acres Subdivision (Flat Book 119, 60)

PERFORMED BY:
SKIPPER ENGINEERING, INC.
171 WOODLAND DR.
RAINBOW CITY, ALA.
256-413-7726

LINE	BEARING	DISTANCE	BEARING	DISTANCE	BEARING	DISTANCE	BEARING	DISTANCE
1	N 147° 12' 30" E	22.60	N 147° 12' 30" E	22.60	N 147° 12' 30" E	22.60	N 147° 12' 30" E	22.60
2	S 89° 51' 15" W	53.00	S 89° 51' 15" W	53.00	S 89° 51' 15" W	53.00	S 89° 51' 15" W	53.00
3	N 147° 12' 30" E	22.60	N 147° 12' 30" E	22.60	N 147° 12' 30" E	22.60	N 147° 12' 30" E	22.60
4	S 89° 51' 15" W	53.00	S 89° 51' 15" W	53.00	S 89° 51' 15" W	53.00	S 89° 51' 15" W	53.00
5	N 147° 12' 30" E	22.60	N 147° 12' 30" E	22.60	N 147° 12' 30" E	22.60	N 147° 12' 30" E	22.60
6	S 89° 51' 15" W	53.00	S 89° 51' 15" W	53.00	S 89° 51' 15" W	53.00	S 89° 51' 15" W	53.00
7	N 147° 12' 30" E	22.60	N 147° 12' 30" E	22.60	N 147° 12' 30" E	22.60	N 147° 12' 30" E	22.60
8	S 89° 51' 15" W	53.00	S 89° 51' 15" W	53.00	S 89° 51' 15" W	53.00	S 89° 51' 15" W	53.00
9	N 147° 12' 30" E	22.60	N 147° 12' 30" E	22.60	N 147° 12' 30" E	22.60	N 147° 12' 30" E	22.60
10	S 89° 51' 15" W	53.00	S 89° 51' 15" W	53.00	S 89° 51' 15" W	53.00	S 89° 51' 15" W	53.00
11	N 147° 12' 30" E	22.60	N 147° 12' 30" E	22.60	N 147° 12' 30" E	22.60	N 147° 12' 30" E	22.60
12	S 89° 51' 15" W	53.00	S 89° 51' 15" W	53.00	S 89° 51' 15" W	53.00	S 89° 51' 15" W	53.00

0 1 2 3 4 5 6 7 8 9 10 11 12 13 14 15 16 17 18 19 20 21 22 23 24 25 26 27 28 29 30 31 32 33 34 35 36 37 38 39 40 41 42 43 44 45 46 47 48 49 50 51 52 53 54 55 56 57 58 59 60 61 62 63 64 65 66 67 68 69 70 71 72 73 74 75 76 77 78 79 80 81 82 83 84 85 86 87 88 89 90 91 92 93 94 95 96 97 98 99 100