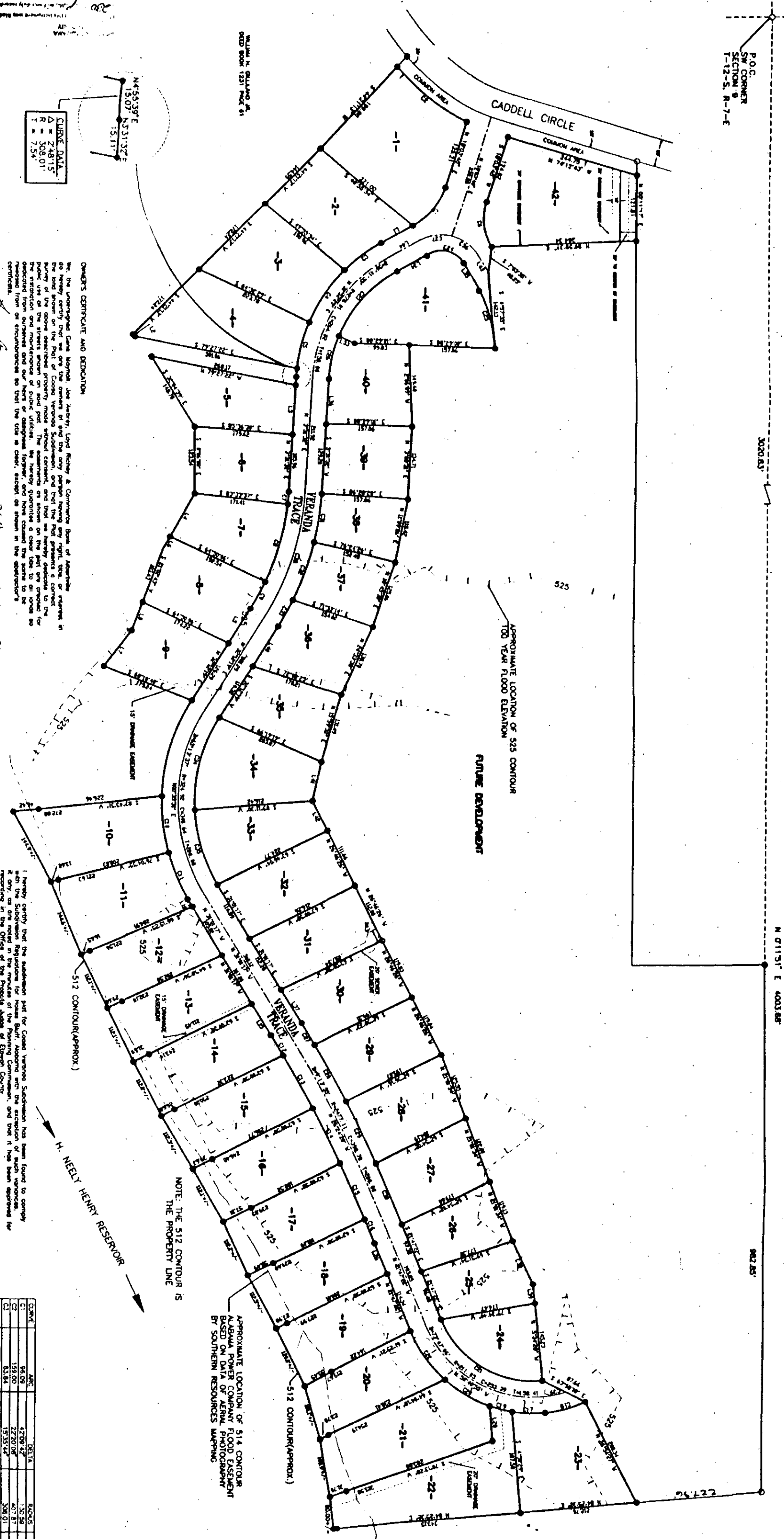
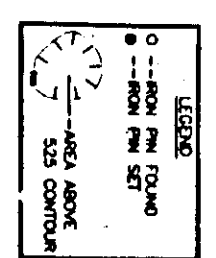
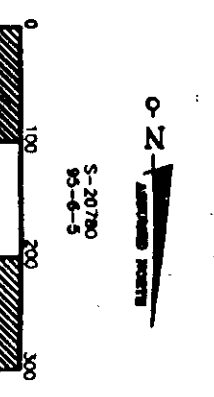


COOSA VERANDA SUBDIVISION A PORTION OF SECTION 9, T-12-S, R-7-E HOLES BLUFF, ALABAMA

PLAT BOOK K, PAGE 4



LOT	AREA	PERCENTAGE	AREA	PERCENTAGE	AREA	PERCENTAGE	AREA	PERCENTAGE
1	1.00	4.17	1.00	4.17	1.00	4.17	1.00	4.17
2	1.00	4.17	1.00	4.17	1.00	4.17	1.00	4.17
3	1.00	4.17	1.00	4.17	1.00	4.17	1.00	4.17
4	1.00	4.17	1.00	4.17	1.00	4.17	1.00	4.17
5	1.00	4.17	1.00	4.17	1.00	4.17	1.00	4.17
6	1.00	4.17	1.00	4.17	1.00	4.17	1.00	4.17
7	1.00	4.17	1.00	4.17	1.00	4.17	1.00	4.17
8	1.00	4.17	1.00	4.17	1.00	4.17	1.00	4.17
9	1.00	4.17	1.00	4.17	1.00	4.17	1.00	4.17
10	1.00	4.17	1.00	4.17	1.00	4.17	1.00	4.17
11	1.00	4.17	1.00	4.17	1.00	4.17	1.00	4.17
12	1.00	4.17	1.00	4.17	1.00	4.17	1.00	4.17
13	1.00	4.17	1.00	4.17	1.00	4.17	1.00	4.17
14	1.00	4.17	1.00	4.17	1.00	4.17	1.00	4.17
15	1.00	4.17	1.00	4.17	1.00	4.17	1.00	4.17
16	1.00	4.17	1.00	4.17	1.00	4.17	1.00	4.17
17	1.00	4.17	1.00	4.17	1.00	4.17	1.00	4.17
18	1.00	4.17	1.00	4.17	1.00	4.17	1.00	4.17
19	1.00	4.17	1.00	4.17	1.00	4.17	1.00	4.17
20	1.00	4.17	1.00	4.17	1.00	4.17	1.00	4.17
21	1.00	4.17	1.00	4.17	1.00	4.17	1.00	4.17
22	1.00	4.17	1.00	4.17	1.00	4.17	1.00	4.17
23	1.00	4.17	1.00	4.17	1.00	4.17	1.00	4.17
24	1.00	4.17	1.00	4.17	1.00	4.17	1.00	4.17

OWNER'S CERTIFICATE AND DECLARATION

I, the undersigned, being the owner of the above described premises, do hereby certify that the same are in compliance with the provisions of the Act of the Legislature of Alabama, approved March 10, 1901, and the Act of the Legislature of Alabama, approved March 10, 1905, and the Act of the Legislature of Alabama, approved March 10, 1907, and the Act of the Legislature of Alabama, approved March 10, 1909, and the Act of the Legislature of Alabama, approved March 10, 1911, and the Act of the Legislature of Alabama, approved March 10, 1913, and the Act of the Legislature of Alabama, approved March 10, 1915, and the Act of the Legislature of Alabama, approved March 10, 1917, and the Act of the Legislature of Alabama, approved March 10, 1919, and the Act of the Legislature of Alabama, approved March 10, 1921, and the Act of the Legislature of Alabama, approved March 10, 1923, and the Act of the Legislature of Alabama, approved March 10, 1925, and the Act of the Legislature of Alabama, approved March 10, 1927, and the Act of the Legislature of Alabama, approved March 10, 1929, and the Act of the Legislature of Alabama, approved March 10, 1931, and the Act of the Legislature of Alabama, approved March 10, 1933, and the Act of the Legislature of Alabama, approved March 10, 1935, and the Act of the Legislature of Alabama, approved March 10, 1937, and the Act of the Legislature of Alabama, approved March 10, 1939, and the Act of the Legislature of Alabama, approved March 10, 1941, and the Act of the Legislature of Alabama, approved March 10, 1943, and the Act of the Legislature of Alabama, approved March 10, 1945, and the Act of the Legislature of Alabama, approved March 10, 1947, and the Act of the Legislature of Alabama, approved March 10, 1949, and the Act of the Legislature of Alabama, approved March 10, 1951, and the Act of the Legislature of Alabama, approved March 10, 1953, and the Act of the Legislature of Alabama, approved March 10, 1955, and the Act of the Legislature of Alabama, approved March 10, 1957, and the Act of the Legislature of Alabama, approved March 10, 1959, and the Act of the Legislature of Alabama, approved March 10, 1961, and the Act of the Legislature of Alabama, approved March 10, 1963, and the Act of the Legislature of Alabama, approved March 10, 1965, and the Act of the Legislature of Alabama, approved March 10, 1967, and the Act of the Legislature of Alabama, approved March 10, 1969, and the Act of the Legislature of Alabama, approved March 10, 1971, and the Act of the Legislature of Alabama, approved March 10, 1973, and the Act of the Legislature of Alabama, approved March 10, 1975, and the Act of the Legislature of Alabama, approved March 10, 1977, and the Act of the Legislature of Alabama, approved March 10, 1979, and the Act of the Legislature of Alabama, approved March 10, 1981, and the Act of the Legislature of Alabama, approved March 10, 1983, and the Act of the Legislature of Alabama, approved March 10, 1985, and the Act of the Legislature of Alabama, approved March 10, 1987, and the Act of the Legislature of Alabama, approved March 10, 1989, and the Act of the Legislature of Alabama, approved March 10, 1991, and the Act of the Legislature of Alabama, approved March 10, 1993, and the Act of the Legislature of Alabama, approved March 10, 1995, and the Act of the Legislature of Alabama, approved March 10, 1997, and the Act of the Legislature of Alabama, approved March 10, 1999, and the Act of the Legislature of Alabama, approved March 10, 2001, and the Act of the Legislature of Alabama, approved March 10, 2003, and the Act of the Legislature of Alabama, approved March 10, 2005, and the Act of the Legislature of Alabama, approved March 10, 2007, and the Act of the Legislature of Alabama, approved March 10, 2009, and the Act of the Legislature of Alabama, approved March 10, 2011, and the Act of the Legislature of Alabama, approved March 10, 2013, and the Act of the Legislature of Alabama, approved March 10, 2015, and the Act of the Legislature of Alabama, approved March 10, 2017, and the Act of the Legislature of Alabama, approved March 10, 2019, and the Act of the Legislature of Alabama, approved March 10, 2021, and the Act of the Legislature of Alabama, approved March 10, 2023, and the Act of the Legislature of Alabama, approved March 10, 2025.

OWNER'S SIGNATURE: _____
DATE: _____

RESTRICTIONS
MISC. 337 PG 311