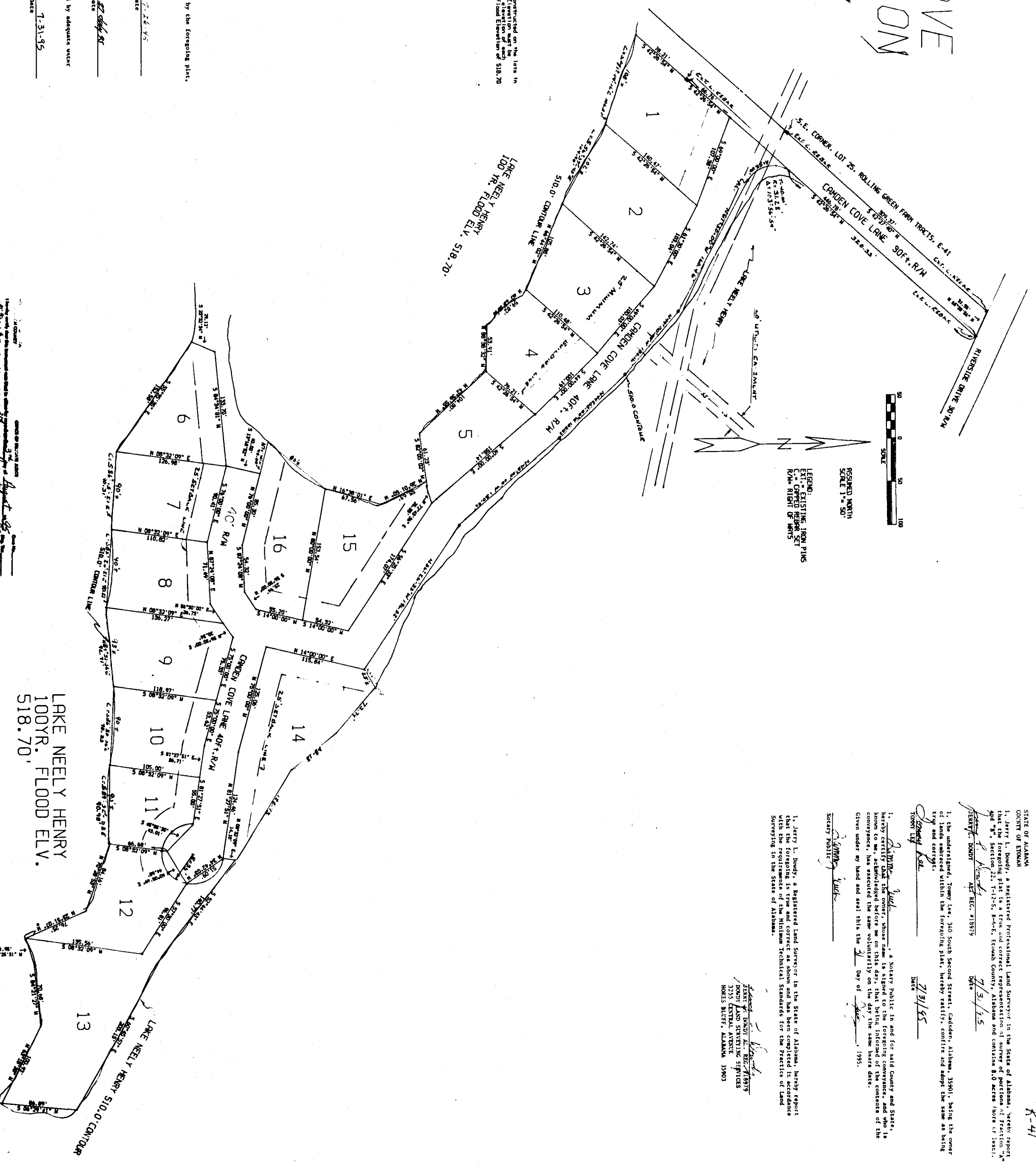


CAMDEN COVE SUBDIVISION

A PORTION OF PARCELS 17 & 20, SECTION 22, T12S, R12E, AND PARCELS 18, 19, 21, 22, SECTION 22, T12S, R12E, BLOCK 4, 2nd EDITION OF 1955, MAP 319 PG. 327

SPECIAL NOTE:
Before the plat is recorded, the applicant must provide a copy of the plat to the City of Camden Engineering Department for their review and approval. The plat must be submitted with the appropriate fees and a copy of the plat must be submitted to the City of Camden Engineering Department for their review and approval. The plat must be submitted with the appropriate fees and a copy of the plat must be submitted to the City of Camden Engineering Department for their review and approval.

STATE OF ALABAMA
COUNTY OF BLOOMINGDALE
CITY OF CAMDEN
This subdivision, hereby approved, the subdivision represented by the foregoing plat, with the exceptions as noted, if any.
For the City of Camden Engineering Department
Donald C. Beckler DATE: 7-31-95
For the City of Camden Planning Commission
Tommy Lee DATE: 7-31-95
For the City of Camden Water and Sewer Board
Public Department, hereby confirm said subdivision will be served by adequate water pressure and sewer availability.
John E. Bostick DATE: 7-31-95
For the Camden County Health Department
Kevin J. Powell DATE: 7-31-95



Restrictious Misc. 319 pg. 327

41

Surveyed by *Tommy Lee* on 7/31/95
Checked by *John E. Bostick* on 7/31/95
Approved by *Kevin J. Powell* on 7/31/95

STATE OF ALABAMA
COUNTY OF BLOOMINGDALE
I, Jerry L. Bondy, a Registered Professional Land Surveyor in the State of Alabama, hereby report that the foregoing plat is a true and correct representation of certain of parcels 17 & 20, Section 22, T12S, R12E, and parcels 18, 19, 21, 22, Section 22, T12S, R12E, Block 4, 2nd Edition of 1955, as shown on the plat and map hereon.
Witness my hand and seal this 27th day of July, 1995.
Jerry L. Bondy DATE: 7/27/95
Surveyor

I, Jerry L. Bondy, a Registered Land Surveyor in the State of Alabama, hereby report that the foregoing is true and correct as shown and has been completed in accordance with the requirements of the Alabama Professional Land Surveyors Act, as amended, and the Surveying Code of the State of Alabama.
Jerry L. Bondy DATE: 7/27/95
Surveyor

JOHN E. BOSTICK
2535 CENTRAL AVENUE
BLOOMINGDALE, ALABAMA 36803