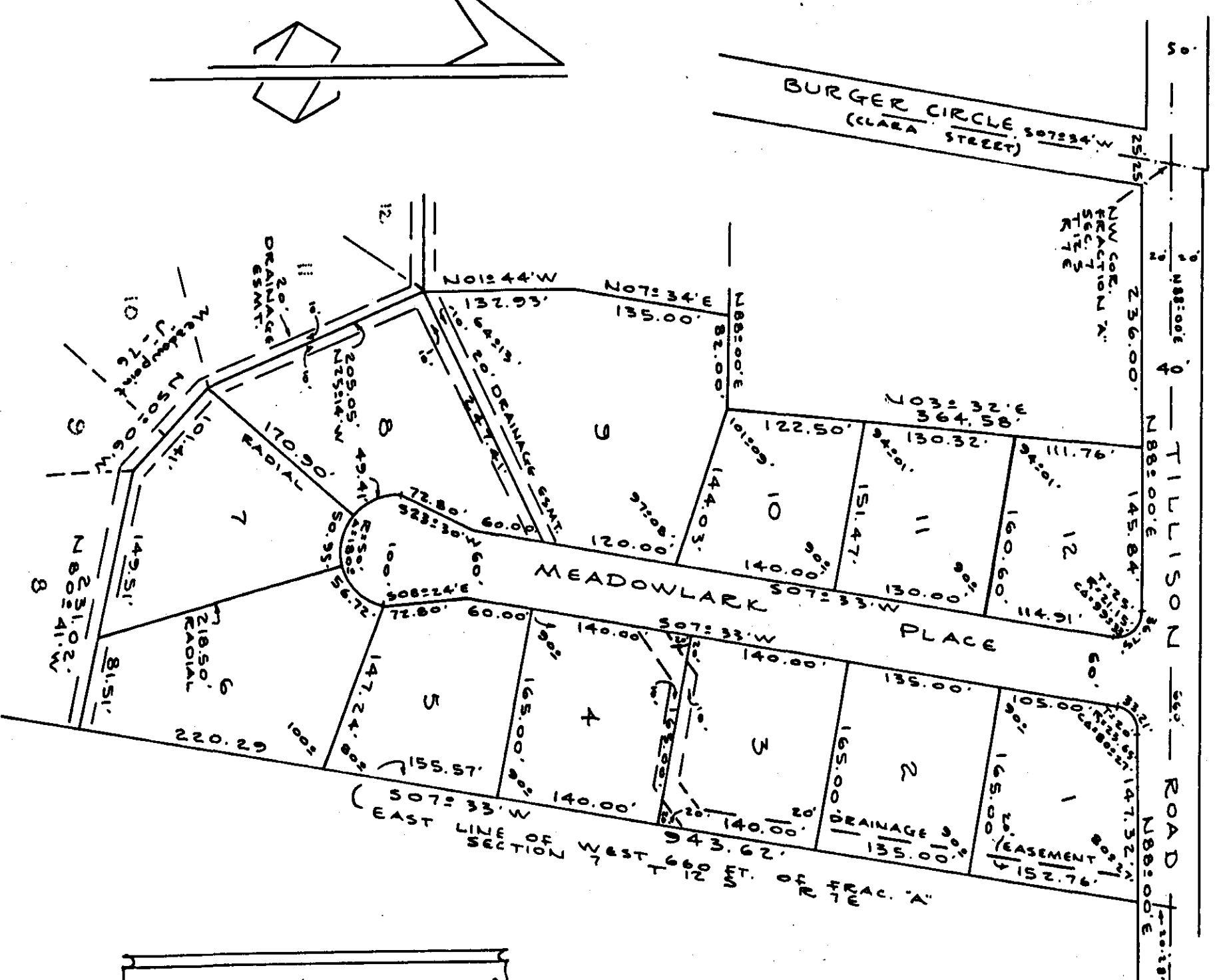


MEADOWPOINT,
UNIT TWO

Restrictions
See
Book-210
PAGE-211



SCALE - 1"=100'
DATE - JUNE 12, 1990
SURVEY BY - GAW JAW JAW
DRAWN BY - BH

note -
Boundary Precision - ratio
= 1/400

STATE OF ALABAMA:
COUNTY OF STOWAH:
I, Robert H. Waggon, A NOTARY PUBLIC IN AND FOR SAID COUNTY AND STATE, HEREBY CERTIFY THAT GERRY STEPHEN GASKIN AND WIFE, PAMELA D. GASKIN, WHOSE NAMES ARE SIGNED TO THE FOREGOING CONVEYANCE AND WHO ARE KNOWN TO ME, ACKNOWLEDGED BEFORE ME ON THIS DAY, THAT BEING INFORMED OF THE CONTENTS OF THE CONVEYANCE, THEY EXECUTED THE SAME VOLUNTARILY ON THE DAY THE SAME BEARS DATE. GIVEN UNDER MY HAND AND SEAL THIS THE 12th DAY OF August, 1990.
NOTARY PUBLIC

STATE OF ALABAMA:
COUNTY OF STOWAH:
WE THE UNDERSIGNED, GERRY STEPHEN GASKIN AND WIFE, PAMELA D. GASKIN, BEING OWNERS OF THE LANDS EMBRACED WITHIN THE FOREGOING PLAT, DO HEREBY RATIFY, CONFIRM, AND ADOPT THE SAME AS BEING TRUE AND CORRECT.
This the 24th DAY OF August, 1990.
Gerry Stephen Gaskin
Pamela D. Gaskin
PAMELA D. GASKIN

STATE OF ALABAMA:
COUNTY OF STOWAH:
I, ROBERT H. WAGGON, A REGISTERED PROFESSIONAL LAND SURVEYOR OF GADSDEN, AL, HEREBY CERTIFY THAT THE FOREGOING PLAT IS A TRUE AND CORRECT REPRESENTATION OF SURVEY AND SUBDIVISION OF PORTIONS OF THE WEST 660 FT. OF SECTION 7, SECTION 7, TOWNSHIP 12 SOUTH, RANGE 7 EAST OF THE HUNTSVILLE MERIDIAN, STOWAH COUNTY, AL AS EXECUTED ON THIS THE 12th DAY OF June, 1990
ALABAMA REG. PROFESSIONAL LAND SURVEYOR # 4634

STATE OF ALABAMA:
COUNTY OF STOWAH:
WE THE UNDERSIGNED, DO HEREBY APPROVE THE SUBDIVISION REPRESENTED BY THE FOREGOING PLAT WITH THE EXCEPTIONS AS NOTED, IF ANY. See notes 1 & 2.
FOR: STOWAH COUNTY HEALTH DEPT.
Date - 10/13/90 Title - County Engineer
Name - David M. Hester
FOR: STOWAH COUNTY ENGINEERING DEPT.
Date - 11/7/90 Title - County Engineer
Name - David M. Hester
See Subdivision files at Stowah County Health Dept. for conditions of approval.
Note - Stowah County is not responsible for justifying water drainage easements or facilities beyond present street right of way.

HEADHEAD ASSOCIATES
SURVEYORS AND LAND PLANNERS
P. O. BOX 5014
GADSDEN, AL 35905
Ph. 492-3330



THE STATE OF ALABAMA
COUNTY OF STOWAH
I hereby certify that this instrument was filed to effect the recording of the same in the public records of this county on the 14th day of June, 1990.
Notary Public
Notary Fee \$ 20.00
Filed for Record 11:45 AM
Judge of Probate, Stowah County, Ala. Term 14 58