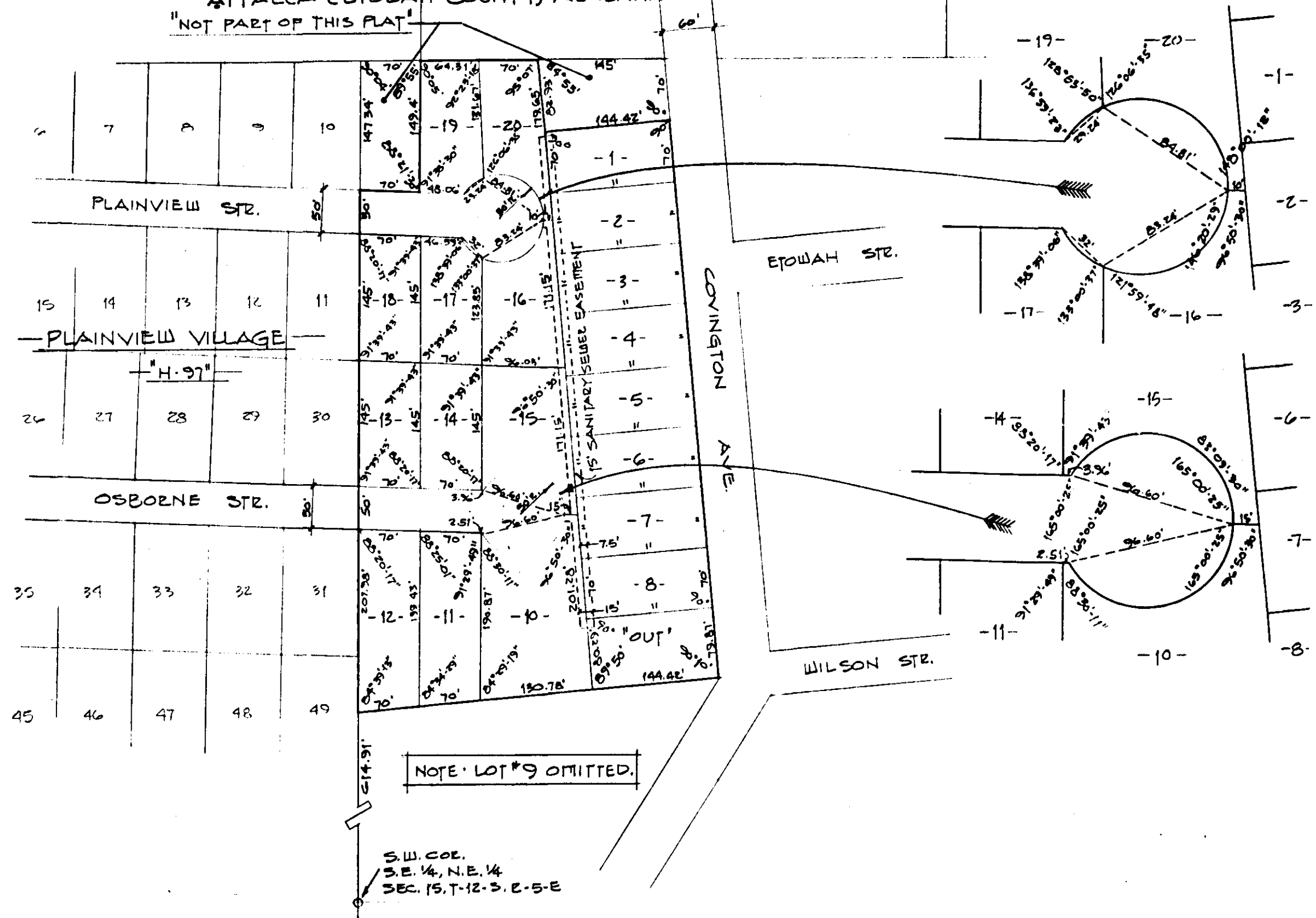


PLAINVIEW VILLAGE FIRST ADDITION

ATTALLA (ETOWAH COUNTY) ALABAMA
"NOT PART OF THIS PLAT"



STATE OF ALABAMA:
COUNTY OF ETOWAH:

I, BENNETT TUCKER, A REGISTERED ENGINEER AND LAND SURVEYOR OF GADSDEN, ALABAMA, HEREBY CERTIFY THAT THE FOREGOING IS A TRUE AND CORRECT MAP OR PLAT OF THE LANDS HEREIN SHOWN.
ACCORDING TO MY SURVEY THIS THE 4TH DAY OF September 1990.

Bennett Tucker
BENNETT TUCKER, ALA. REG. # 5350
JONES, BLAIR, WALDRUP & TUCKER INC.

STATE OF ALABAMA:
COUNTY OF ETOWAH:

WE, RODNEY V. AUSTIN, BOBBY L. AUSTIN, ROBERT W. KLEIN, AS OWNERS OF THE LANDS HEREIN SHOWN, DO HEREBY RAFFIFY AND ADOPT THE WITHIN MAP AS BEING TRUE AND CORRECT.
THIS THE 14TH DAY OF September 1990.

BY: Rodney V. Austin
RODNEY V. AUSTIN

BY: Bobby L. Austin
BOBBY L. AUSTIN

BY: Robert W. Klein
ROBERT W. KLEIN

STATE OF ALABAMA:
COUNTY OF ETOWAH:

I, Malcolm Gregory Prater, AS NOTARY PUBLIC IN AND FOR SAID COUNTY AND STATE, HEREBY CERTIFY THAT RODNEY V. AUSTIN, BOBBY L. AUSTIN, ROBERT W. KLEIN HAVE SIGNED THE WITHIN MAP, AND WHO ARE KNOWN TO ME, ACKNOWLEDGED BEFORE ME ON THIS DATE, THAT BEING INFORMED OF THE CONTENTS, THEY EXECUTED THE SAME VOLUNTARILY ON THE DAY THE SAME BEARS DATE.

WITNESS MY HAND AND SEAL THIS THE 14TH DAY OF September 1990.
MY COMMISSION EXPIRES JUNE 27, 1993.

Malcolm Gregory Prater
A NOTARY PUBLIC

APPROVED BY: Ronny M. Smith
ETOWAH COUNTY HEALTH DEPARTMENT.

Sept 17, 1990
DATE

APPROVED BY: David Shelton
CITY OF ATTALLA PLANNING COMMISSION.

Sept 14, 1990
DATE

THE STATE OF ALABAMA
ETOWAH COUNTY
I hereby certify that this instrument was filed in office for record on the 14th day of Sept 1990.
Filed by B.T.
Notary Public
Sec. Fee 19.00
Judge of Probate, Etowah County, Ala. Seal 31.52