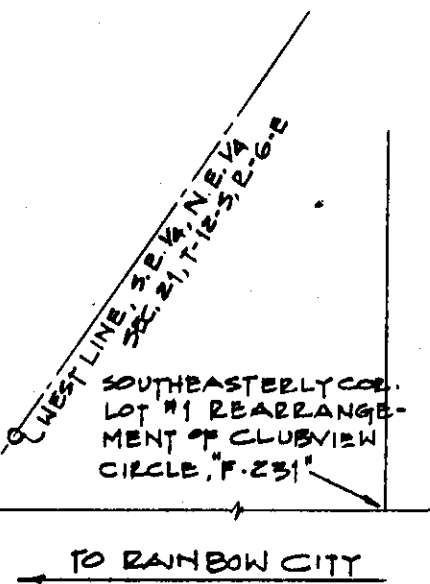
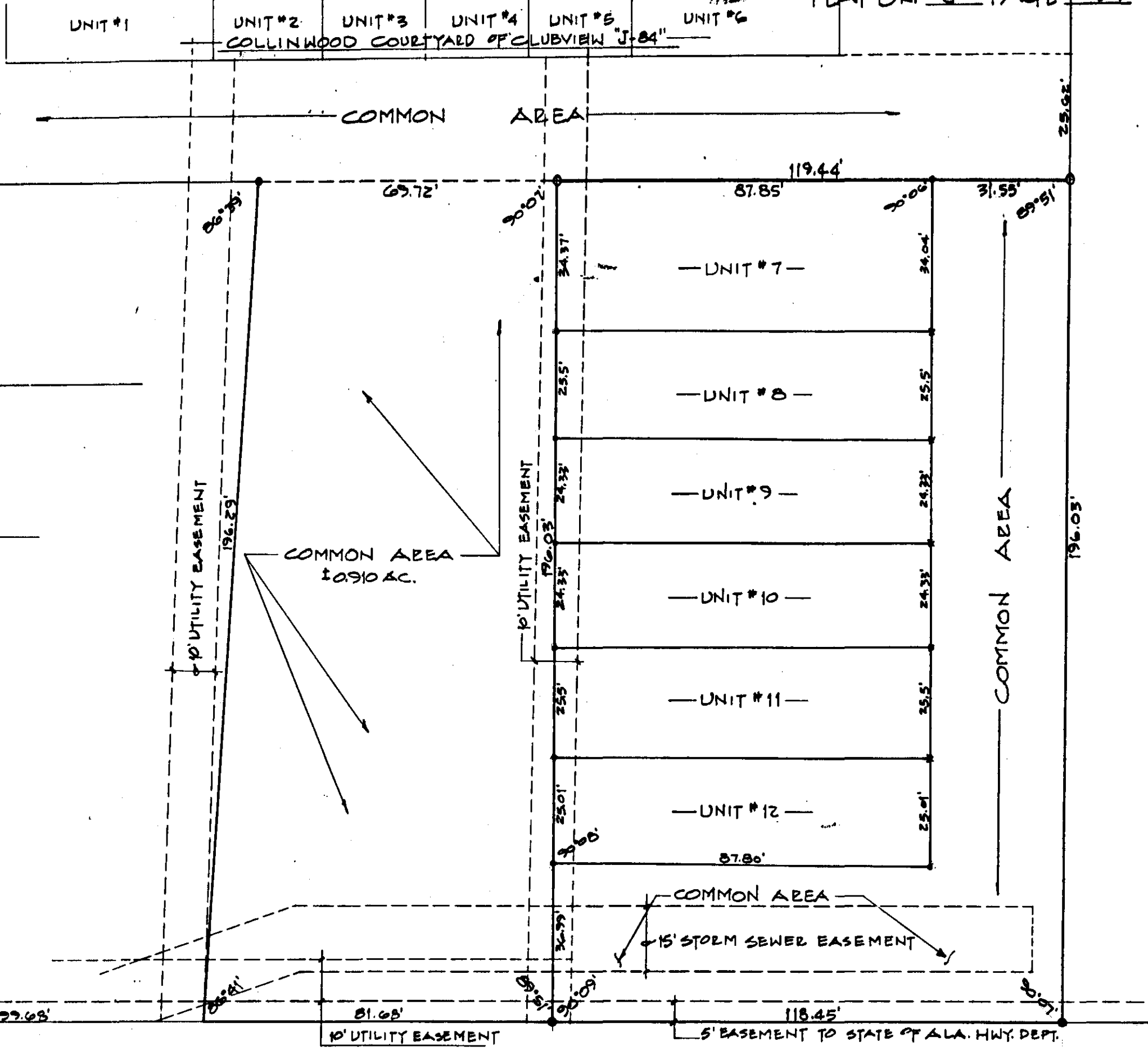


S-7844
88-7-58
1"=20'

COLLINWOOD COURTYARD OF CLUB VIEW 1ST ADD.



U.S. HWY. # 411 (RAINBOW DRIVE)

STATE OF ALABAMA:
COUNTY OF ETOWAH:

I, BENNETT TUCKER, A REGISTERED ENGINEER AND LAND SURVEYOR OF GADSDEN, ALABAMA, HEREBY CERTIFY THAT THE FOREGOING IS A TRUE AND CORRECT MAP OF PLAT OF THE LANDS HEREIN SHOWN.

ACCORDING TO MY SURVEY THIS THE 6TH DAY OF DEC. 1988.

Bennett Tucker
BENNETT TUCKER, A.L.A. REG. # 5350
JONES, BLAIR, WALDRUP & TUCKER INC.

STATE OF ALABAMA:
COUNTY OF ETOWAH:

THE UNDERSIGNED, COLLINS AND ASSOCIATES INCORPORATED, A CORPORATION, DOES HEREBY RATIFY, CONFIRM AND ADOPT THE FOREGOING PLAT AS BEING TRUE AND CORRECT.

COLLINS AND ASSOCIATES INC.
BY: *Donald L. Collins*
DONALD L. COLLINS - PRESIDENT

ATTESTED BY: *Hannah Case S. Collins*
HANNAH CASE S. COLLINS - SECRETARY

STATE OF ALABAMA:
COUNTY OF ETOWAH:

TO GADSDEN

I, *M.D. Waldrop Jr.*, A NOTARY PUBLIC IN AND FOR SAID COUNTY AND STATE, DO HEREBY CERTIFY THAT DONALD L. COLLINS, WHOSE NAME AS PRESIDENT AND HANNAH CASE S. COLLINS, SECRETARY OF COLLINS AND ASSOC'S INC. A CORPORATION, HAS SIGNED TO THE FOREGOING CONVEYANCE, AND WHO ARE KNOWN TO ME, ACKNOWLEDGED BEFORE ME ON THIS DAY, THAT BEING INFORMED OF THE CONTENTS OF THE CONVEYANCE, THEY AS SUCH OFFICERS, AND WITH FULL AUTHORITY, EXECUTED THE SAME VOLUNTARILY FOR AND AS THE ACT OF SAID CORPORATION ON THE DAY THE SEAL BEARS DATE

WITNESS MY HAND AND SEAL THIS THE 6TH DAY OF DECEMBER 1988.

MY COMMISSION EXPIRES 3-31-91

M.D. Waldrop Jr.
A NOTARY PUBLIC

BY: *Kenneth M. Punnett* 12/16/88
ETOWAH COUNTY HEALTH DEPARTMENT DATE

BY: *R.L. Odehlin* 12/15/88
GADSDEN PLANNING COMMISSION DATE
(CHAIRMAN)

BY: *Joseph L. Elmore* 12/7/88
CITY OF GADSDEN ENGINEER DATE

I FURTHER CERTIFY THAT I HAVE CONSULTED THE FEDERAL INSURANCE ADMINISTRATION FLOOD HAZARD BOUNDARY MAP FOR GADSDEN, DATED 4, 1983, AND FOUND THAT THE ABOVE PROPERTY IS NOT LOCATED IN A SPECIAL FLOOD HAZARD AREA.

Bennett Tucker
BENNETT TUCKER, A.L.A. REG. # 5350
JONES, BLAIR, WALDRUP & TUCKER INC.

THE STATE OF ALABAMA
ETOWAH COUNTY

OFFICE OF PROBATE JUDGE

I hereby certify that this instrument was filed in office for record on the 6th day of December 1988.
At GadSDen, Ala., and was duly recorded on the 6th day of December 1988.

Doc. Fee 10.00
Judge of Probate, Etowah County, Ala. Total 15.00