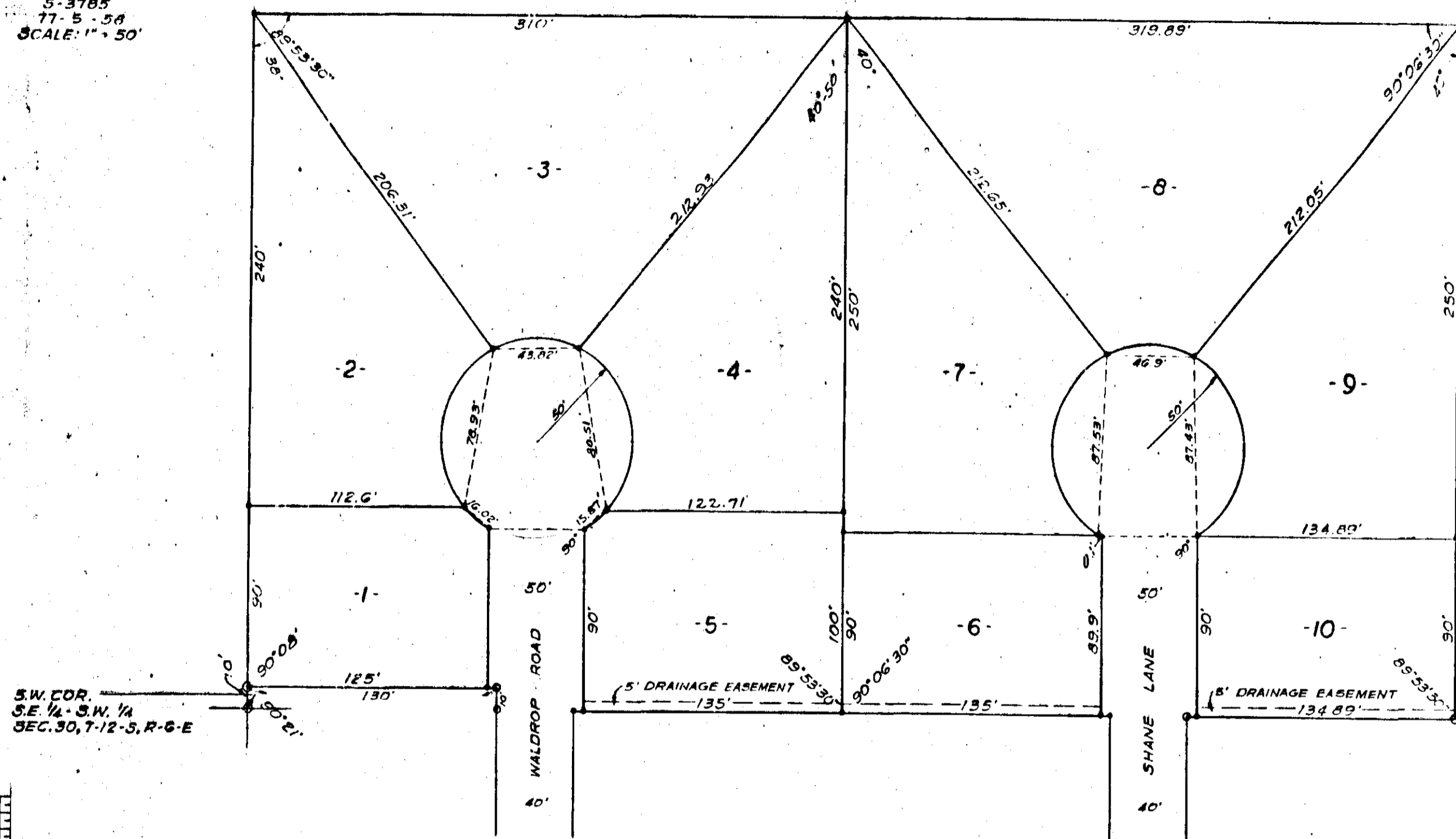


1ST ADDITION  
TO LYNWOOD SUBDIVISION  
RAINBOW CITY, ALABAMA

PLAT BOOK I PAGE 142



S-3785  
77-5-58  
SCALE: 1" = 50'



STATE OF ALABAMA:  
COUNTY OF ETOWAH:

I, M.D. WALDRUP JR., A REGISTERED ENGINEER AND LAND SURVEYOR OF GADSDEN, ALABAMA, DO HEREBY CERTIFY THAT THE FOREGOING IS A TRUE AND CORRECT MAP OR PLAT OF THE LANDS HEREIN SHOWN.

ACCORDING TO MY SURVEY THIS THE 26<sup>TH</sup> DAY OF Sept. 1977.

M.D. Waldrup Jr.  
M.D. WALDRUP JR. ALA. REG. NO. 10051

STATE OF ALABAMA:  
COUNTY OF ETOWAH:

I, \_\_\_\_\_, A NOTARY PUBLIC IN AND FOR SAID COUNTY AND STATE, DO HEREBY CERTIFY THAT GEORGE P. GRAY JR. AND WIFE CONSTANCE GRAY, HAVE SIGNED THE WITHIN MAP AND WHO ARE KNOWN TO ME, ACKNOWLEDGED BEFORE ME ON THIS DAY, THAT BEING INFORMED OF THE CONTENTS, THEY EXECUTED THE SAME VOLUNTARILY ON THE DAY THE SAME BEARS DATE.

WITNESS MY HAND AND SEAL, THIS THE 26<sup>TH</sup> DAY OF Sept. 1977.

MY COMMISSION EXPIRES: Sept. 6, 1978 Mac Waldrop  
A NOTARY PUBLIC

STATE OF ALABAMA:  
COUNTY OF ETOWAH:

WE, GEORGE P. GRAY JR. AND WIFE, CONSTANCE GRAY AS OWNERS OF THE LANDS HEREIN SHOWN, DO HEREBY RATIFY AND ADOPT THE WITHIN MAP AS BEING TRUE AND CORRECT.

THIS THE 26<sup>TH</sup> DAY OF SEPT. 1977.

BY: George P. Gray Jr. BY: Constance J. Gray  
GEORGE P. GRAY JR. CONSTANCE J. GRAY

APPROVED: Hilton R. Savage 10/6/77  
ETOWAH COUNTY HEALTH DEPARTMENT DATE

APPROVED: John Watson 10/13/77  
RAINBOW CITY PLANNING COMMISSION DATE

THE STATE OF ALABAMA  
ETOWAH COUNTY  
I hereby certify that this instrument was filed in office for record on the 28<sup>th</sup> day of Sept. 1977, and was duly recorded on the 19<sup>th</sup> day of Oct. 1977.  
Notary Public, Etowah County, Ala. Mac Waldrop

Restrictions, List 97 Page 121

142

S-3785