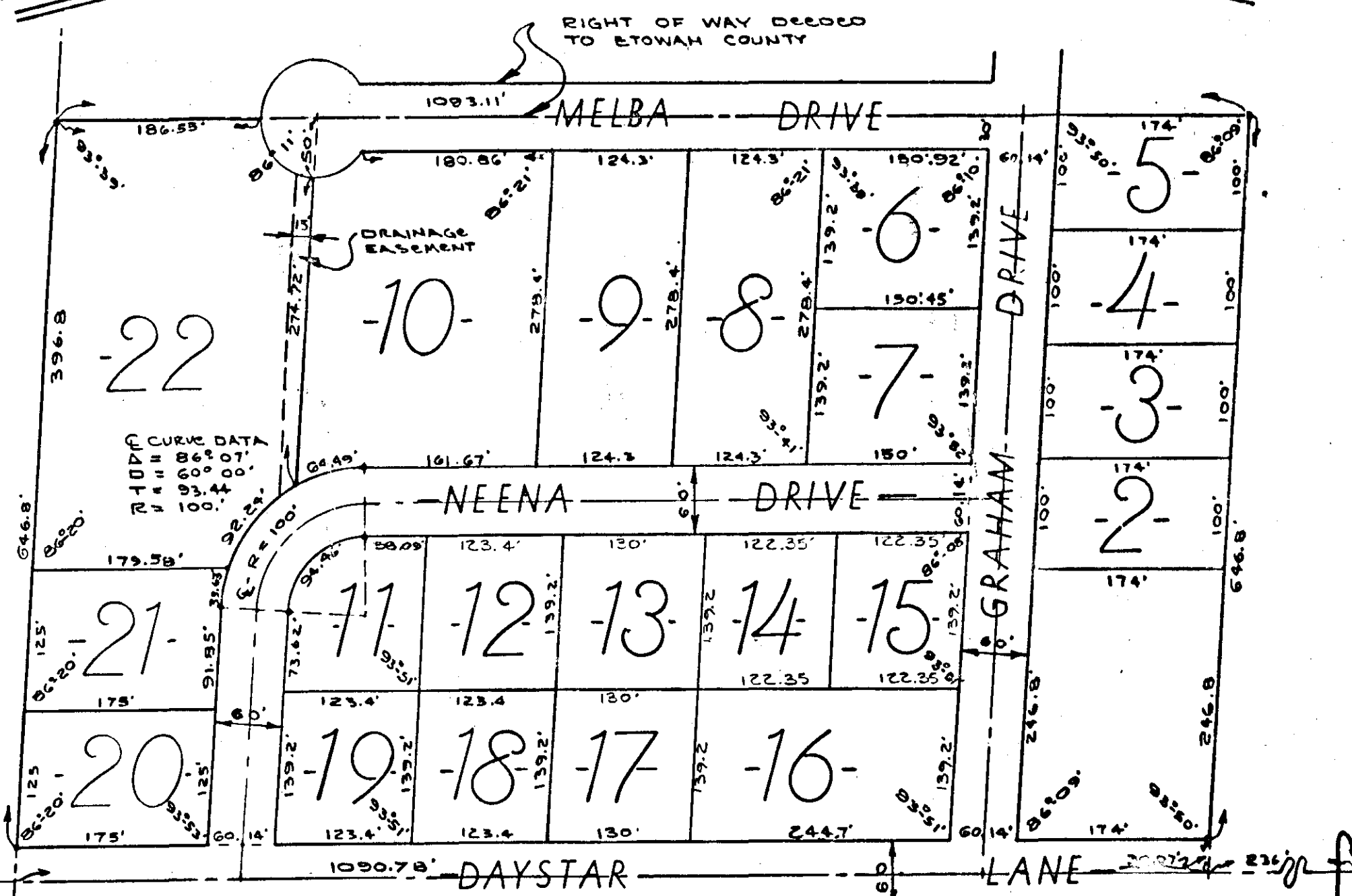


EDWARDS TRACT THREE



S-2899
74-B-41
SCALE 1"=100'



NOTE:
LOT NO. 1 DELETED

NE COR. NW 1/4
SW 1/4 - Sec. 9
T13N, R26E, S.

OFFICE OF THE STATE ENGINEER
COUNTY OF ETOWAH
Cat. No. 25
This instrument was filed in office for record on the 17th day of July, 1975, and was duly recorded on the 17th day of July, 1975.
Total Area 3.34
Total Area 3.34

ROBERTS & SON, INC.
SURVEYING AND ENGINEERING
1000 1/2 S. G. ST. N.W.
ATLANTA, GA. 30309

STATE OF ALABAMA:
COUNTY OF ETOWAH:
We, EDWIN L. EDWARDS, AND WIFE ANN G. EDWARDS, AS OWNERS OF THE LANDS HEREIN SHOWN, DO HEREBY RATIFY AND ADOPT THE WITHIN MAP AS BEING TRUE AND CORRECT.
THIS THE 17TH DAY OF JULY, 1975

Edwin L. Edwards
EDWIN L. EDWARDS

Ann G. Edwards
ANN G. EDWARDS

STATE OF ALABAMA:
COUNTY OF ETOWAH:
I, BENNETT TUCKER, A REGISTERED ENGINEER AND LAND SURVEYOR OF GADSDEN, ALABAMA, HEREBY CERTIFY THAT THE FOREGOING IS A TRUE AND CORRECT MAP OR PLAT OF THE LANDS HEREIN SHOWN.
ACCORDING TO MY SURVEY THIS THE 17TH DAY OF JULY, 1975

Bennett Tucker
BENNETT TUCKER - ALA REG. #5350

STATE OF ALABAMA:
COUNTY OF ETOWAH:
I, MELBA HALL, A NOTARY PUBLIC IN AND FOR SAID COUNTY AND STATE HEREBY CERTIFY THAT EDWIN L. EDWARDS AND WIFE ANN G. EDWARDS, HAVE SIGNED THE WITHIN MAP, AND WHO ARE KNOWN TO ME, ACKNOWLEDGED BEFORE ME ON THIS DATE, THAT BEING INFORMED OF THE CONTENTS, THEY EXECUTED THE SAME VOLUNTARILY ON THE DAY THE SAME BEARS DATE.

WITNESS MY HAND AND SEAL THIS THE 17TH DAY OF JULY, 1975

Melba N. Hall
NOTARY PUBLIC

APPROVED - *Hester R. Sawyer* July 15, 1975
ETOWAH CO. HEALTH DEPT.

MY COMMISSION EXPIRES *October 2, 1976*

APPROVED - *Mission D. Smith* 7-17-75
ETOWAH CO. ENGINEERING DEPT.

RESTRICTIONS MISC 91 PAGE 733