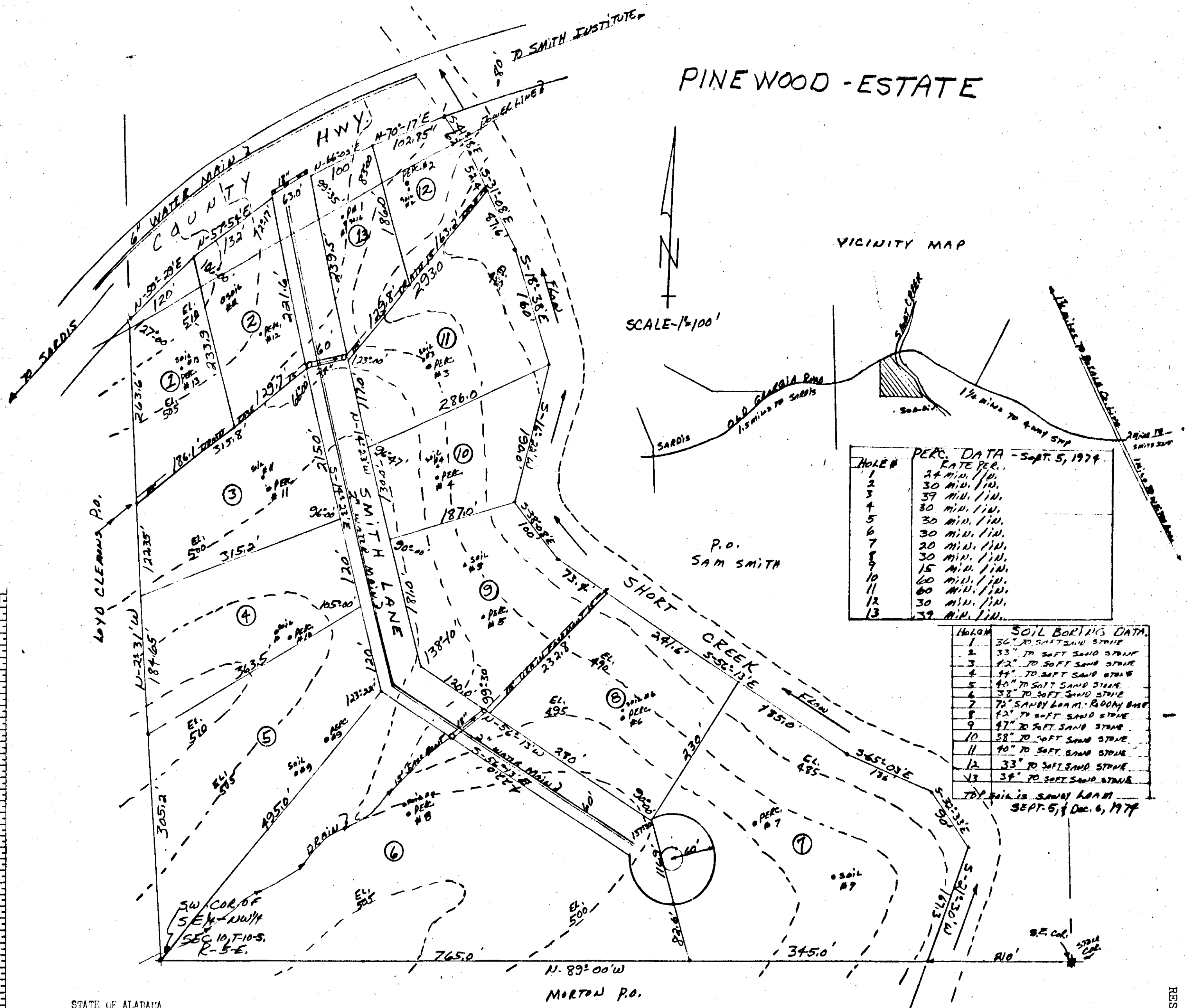


PINEWOOD - ESTATE



PERC. DATA - Sept. 5, 1974

HOLE #	DATE PERC.
1	24 MIN. / IN.
2	30 MIN. / IN.
3	39 MIN. / IN.
4	30 MIN. / IN.
5	30 MIN. / IN.
6	20 MIN. / IN.
7	30 MIN. / IN.
8	15 MIN. / IN.
9	60 MIN. / IN.
10	40 MIN. / IN.
11	30 MIN. / IN.
12	39 MIN. / IN.
13	39 MIN. / IN.

SOIL BORING DATA
TYPED IN SANDY LOAM
SEPT. 5, & DEC. 6, 1974

HOLE #	SOIL BORING DATA
1	35" TO SOFT SAND STRIKE
2	33" TO SOFT SAND STRIKE
3	42" TO SOFT SAND STRIKE
4	44" TO SOFT SAND STRIKE
5	40" TO SOFT SAND STRIKE
6	38" TO SOFT SAND STRIKE
7	70" SANDY LOAM - BOOBY SAND
8	42" TO SOFT SAND STRIKE
9	47" TO SOFT SAND STRIKE
10	58" TO SOFT SAND STRIKE
11	40" TO SOFT SAND STRIKE
12	33" TO SOFT SAND STRIKE
13	38" TO SOFT SAND STRIKE

ROBERTS & SON, INC.
SURVEYING AND ENGINEERING
P.O. BOX 100
MONTICELLO, ALABAMA

STATE OF ALABAMA
COUNTY OF ETOWAH
I hereby certify that I have made an actual survey of the herein contained lands and that the same is true and correct as shown.
According to my survey, this the 9th day of September, 1974.
Signed T.K. Davis
T.K. Davis, Ala. Reg. No. 4543

STATE OF ALABAMA
COUNTY OF ETOWAH
We, the owners of the property contained in this plat, do hereby ratify, confirm and adopt this plat as being true and correct.
This the 18th day of April, 1976
Signed Samuel R. Smith
Signed Linda S. Smith

STATE OF ALABAMA
COUNTY OF ETOWAH
I hereby certify that this subdivision meets the requirements as set out by the Alabama State Health Department.
Signed Hilton R. Savage 4-25-75
County Sanitation Officer

STATE OF ALABAMA
COUNTY OF ETOWAH
I, Robert E. Lewis, a Notary Public in and for said county and state hereby certify that the owners whose names are signed to the foregoing plat and who are known to me have sworn before me, that being informed of its contents, they executed the same of their own free will and accord.
Given under my hand and seal, this the 18th day of April, 1976.
Signed Robert E. Lewis
Notary Public

STATE OF ALABAMA
COUNTY OF ETOWAH
I hereby certify that this subdivision meets the requirements as set out by the Etowah County Engineering Dept.
Signed Maigon B. Smith
Asst. Co. Engineer

Case No. 25
Date 25 April 1976
2.65
2.90

RESTRICTIONS - MISC. 86 PAGE 3