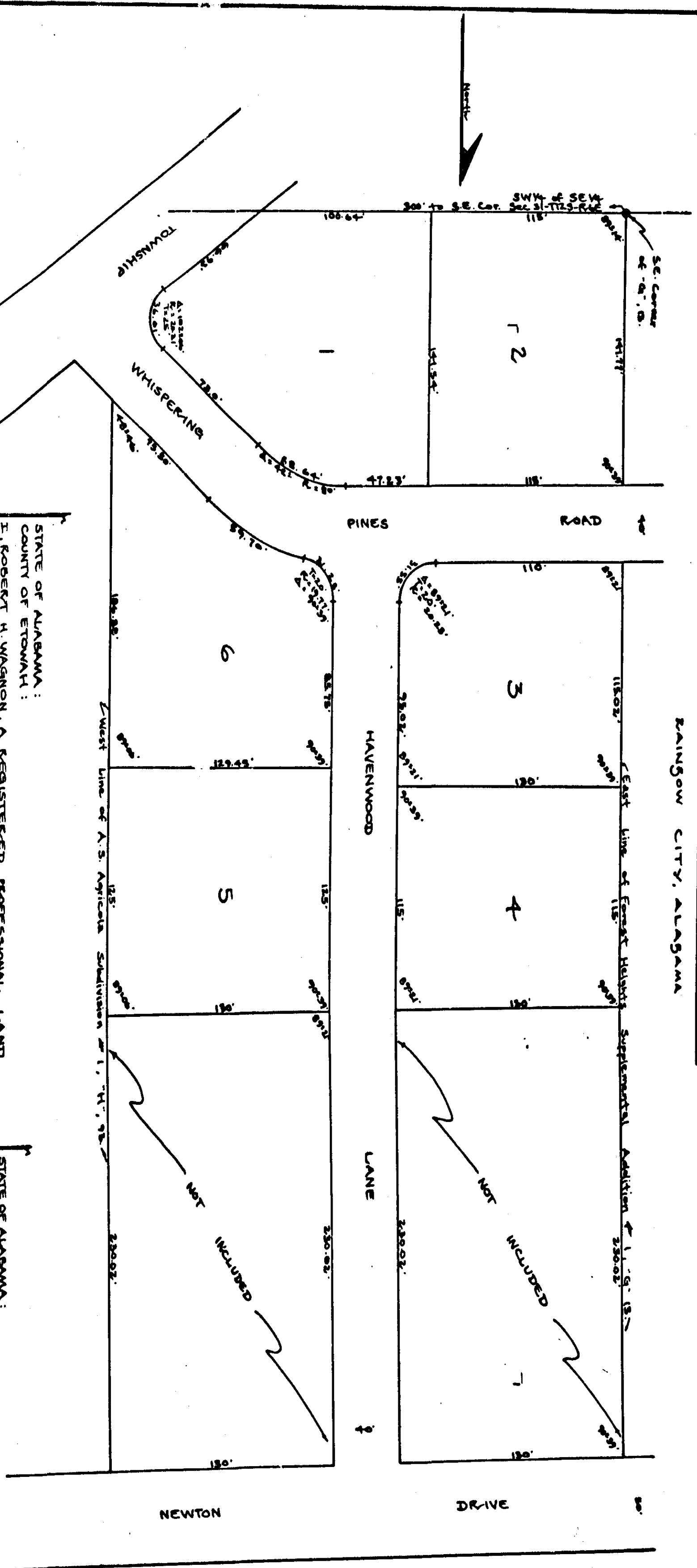


FOREST HEIGHTS

UNIT THREE

BAINSBOW CITY, ALABAMA

PLAT BOOK 1
PAGE 21



STATE OF ALABAMA:
COUNTY OF ETOWAH:
I, ROBERT H. WAGONER, A REGISTERED PROFESSIONAL LAND SURVEYOR OF SAWSPOON, ALABAMA, HEREBY CERTIFY THAT THE FOREGOING PLAT IS A TRUE & CORRECT REPRESENTATION OF SURVEY & SUBDIVISION OF PORTIONS OF THE SOUTH HALF OF THE SW1/4 OF THE SE1/4, IN SECTION 31-TOWNSHIP 12 SOUTH-RANGE 6 EAST OF THE HUNTSVILLE MERIDIAN, ETOWAH COUNTY, ALABAMA, AS EXECUTED ON THIS THE 27TH DAY OF JULY, 1973.

Robert H. Wagoner
PROFESSIONAL LAND SURVEYOR

STATE OF ALABAMA:
COUNTY OF ETOWAH:
I, THE UNDERSIGNED, HEREBY APPROVE THE SUBDIVISION & REPRESENTATION OF THE FOREGOING PLAT WITH THE EXCEPTIONS AS NOTED HEREON.

FOR: ETOWAH COUNTY HEALTH DEPT.
NAME: *Allen B. Smith*
TITLE: *Allen B. Smith*
DATE: *September 11, 1973*

STATE OF ALABAMA:
COUNTY OF ETOWAH:
I, Bertie Bridges, A NOTARY PUBLIC IN & FOR SAID COUNTY AND STATE, HEREBY CERTIFY THAT BEFORE ME AND BEFORE ME AND STATE, CERTAIN OWNERS, WHOSE NAMES ARE SHOWN TO THE FOREGOING CONVEYANCE, AND WHO ARE KNOWN TO ME, ACKNOWLEDGED BEFORE ME ON THIS DAY OF THEIR AWARENESS OF ITS CONTENTS AND HAVE VOLUNTARILY EXECUTED THE SAME ON THIS THE 27TH DAY OF JULY, 1973.

Bertie Bridges
NOTARY PUBLIC

THE STATE OF ALABAMA
COUNTY OF ETOWAH:
I, *Robert H. Wagoner*, a Registered Professional Land Surveyor of Sawspon, Alabama, hereby certify that the foregoing plat is a true and correct representation of survey and subdivision of portions of the south half of the SW1/4 of the SE1/4, in Section 31-Township 12 South-Range 6 East of the Huntsville Meridian, Etowah County, Alabama, as executed on this the 27th day of July, 1973.

Robert H. Wagoner
PROFESSIONAL LAND SURVEYOR

ACKNOWLEDGMENT ASSOCIATES
442 SOUTH THIRD STREET
GADSDEN, ALABAMA

