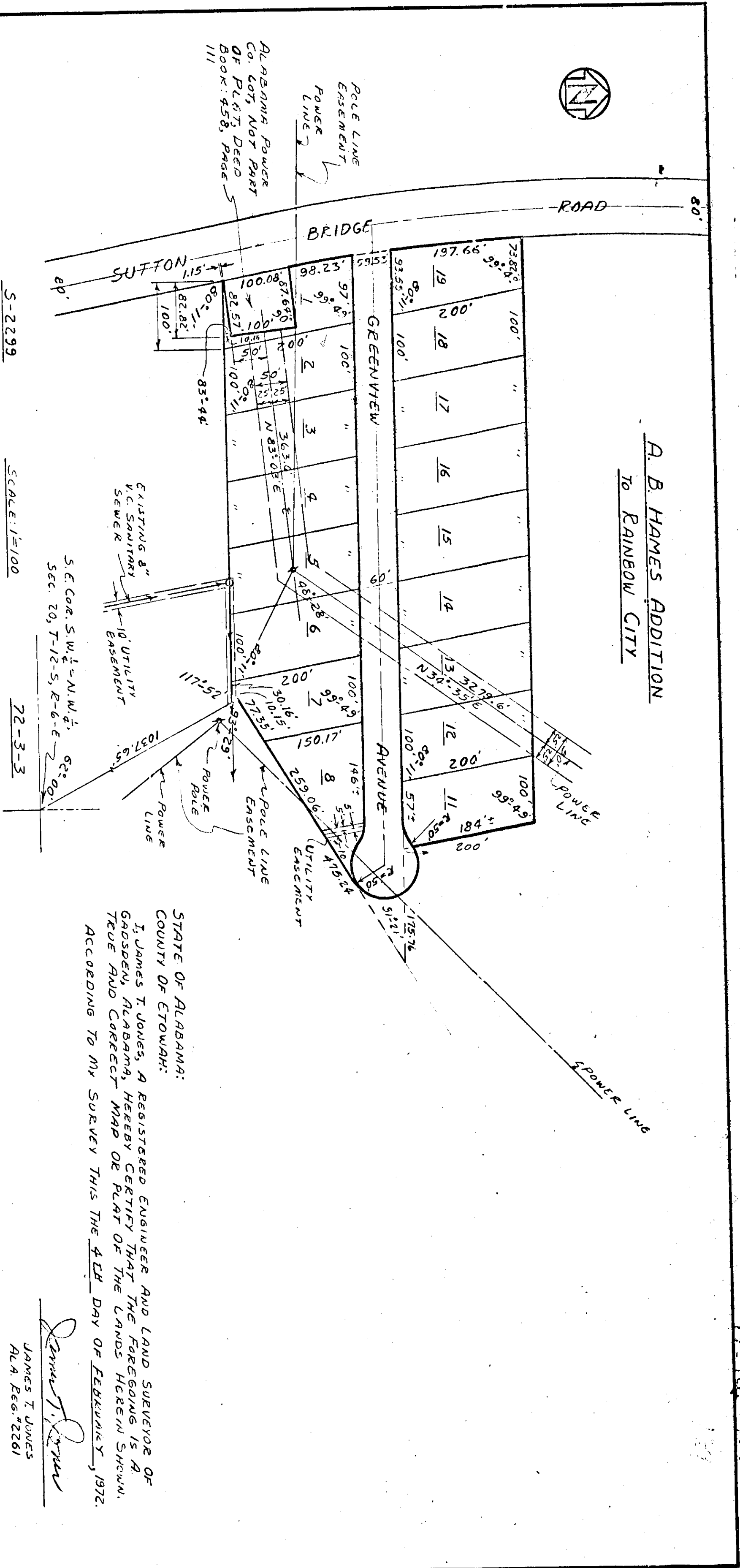


**A. B. HAMES ADDITION  
TO RAINBOW CITY**



S-22299

SCALE: 1"=100'

72-3-3

STATE OF ALABAMA:  
COUNTY OF ETOWAH:  
I, Maec W. Little, A Notary Public in and for said County and State, hereby certify that A. B. HAMES AND WIFE DOROTHY S. HAMES HAVE SIGNED THE WITHIN MAP AND WHO ARE KNOWN TO ME, I ACKNOWLEDGED BEFORE ME ON THIS DATE, THAT BEING INFORMED OF THE CONTENTS, THEY EXECUTED THE SAME VOLUNTARILY ON THE DAY THE SAME BEARS DATE, WITNESS MY HAND AND SEAL THIS THE 13<sup>TH</sup> DAY OF NOVEMBER, 1972.

My Commission Expires: 9/14/76  
DATE

Approved: Maec W. Little November 21, 1972  
HEALTH DEPARTMENT DATE

Maec W. Little  
NOTARY PUBLIC

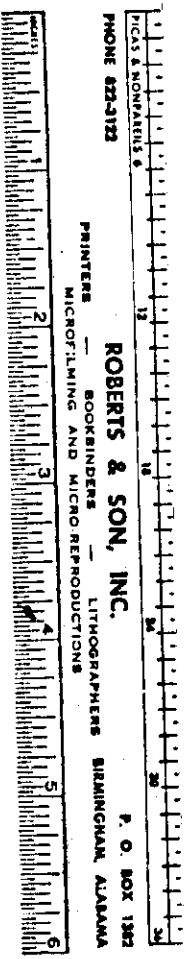
STATE OF ALABAMA:  
COUNTY OF ETOWAH:  
I, James T. Jones, A REGISTERED ENGINEER AND LAND SURVEYOR OF GADSDEN, ALABAMA, HEREBY CERTIFY THAT THE FOREGOING IS A TRUE AND CORRECT MAP OR PLAT OF THE LANDS HEREIN SHOWN, ACCORDING TO MY SURVEY THIS THE 4<sup>TH</sup> DAY OF FEBRUARY, 1972.

James T. Jones  
JAMES T. JONES  
ALA. REG. 2261

STATE OF ALABAMA:  
COUNTY OF ETOWAH:  
We, A. B. HAMES, AND WIFE DOROTHY S. HAMES, AS OWNERS OF THE LANDS HEREIN SHOWN, DO HEREBY RATIFY AND ADOPT THE WITHIN MAP AS BEING TRUE AND CORRECT.  
THIS THE 13<sup>TH</sup> DAY OF NOVEMBER, 1972.

BY: Dorothy S. Hames  
A. B. HAMES  
DOROTHY S. HAMES

28  
28  
115  
196



ROBERT S. SON, INC.  
LITHOGRAPHERS  
MEMPHIS, TENNESSEE  
PRINTERS  
MICROFILMING AND VIDEO REPRODUCTIONS

H.P. 139