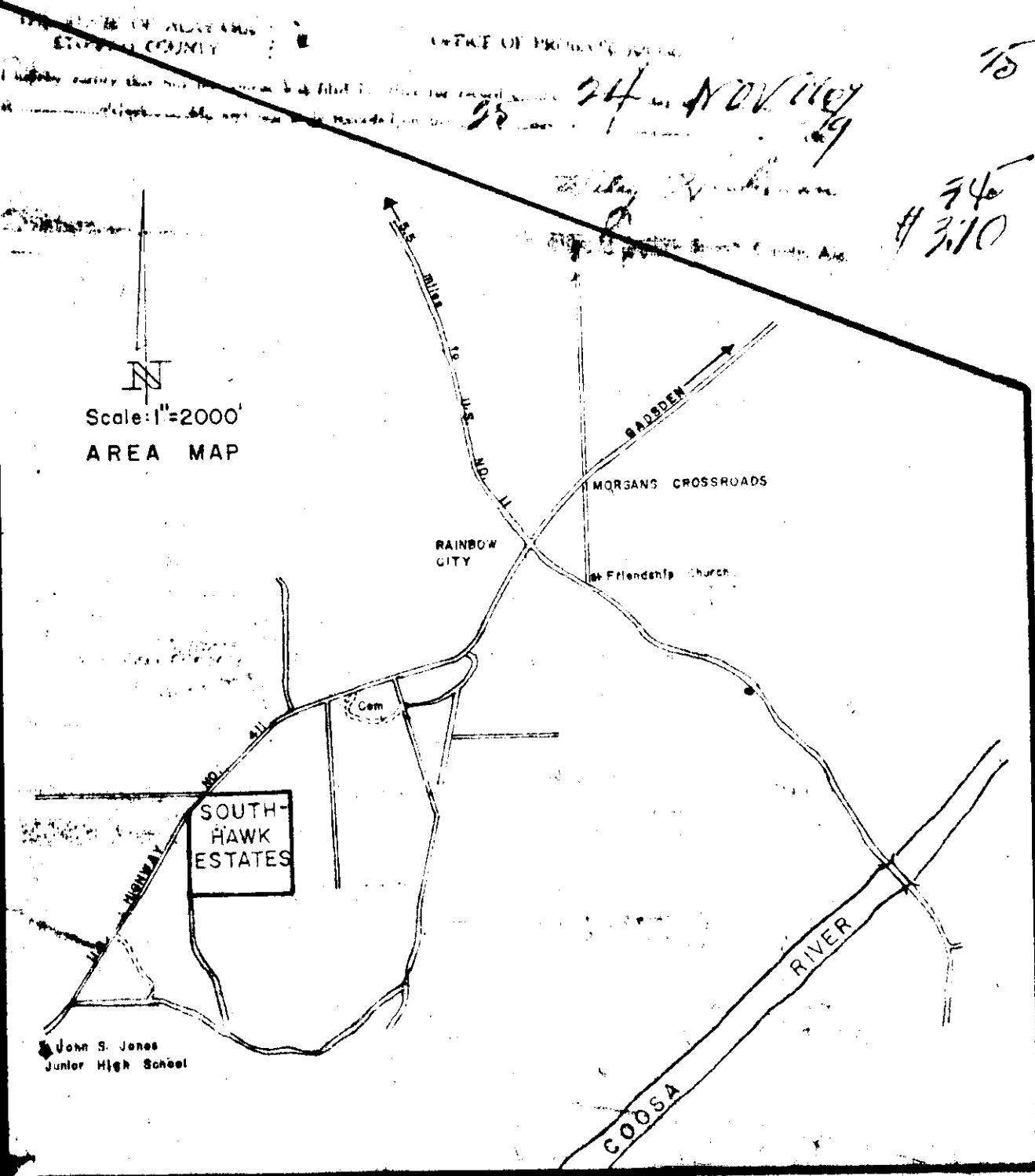


EASEMENT LEGEND
 5' DRAINAGE
 BOTH
 ELECTRICITY 5'
 TELEPHONE 15'
 10 (10X10) TRANSFORMERS

Subdivision map 63009-569



STATE OF ALABAMA
 COUNTY OF ETOWAH
 I, the undersigned, hereby approve the subdivision represented by the foregoing plat, with the exceptions as noted, if any.
 Etowah County Health Department
 Date: May 1966 By: Hilton R. Savage
 Title: Health Officer

SOUTH-HAWK ESTATES
 Rainbow City
 ETOWAH COUNTY, ALABAMA

75-H

General Surveys Co.
 Oneonta, Alabama
 May, 1966