

LOU HAVEN SHORES

STATE OF ALABAMA
COUNTY OF ELOWAH

1. W. Bryant, a registered surveyor of Alabama, hereby certifies that the foregoing is a true and correct map of part of a parcel of land known as, "LOU HAVEN SHORES", that lot corners are marked by iron pins; that bearings shown are magnetic; that this survey is shown in correct relationship to its original government survey.

According to an actual survey this the 27 day of Nov. 1965



W. Bryant
Registered Professional Land Surveyor
No. 2299
Scale 1" = 50'

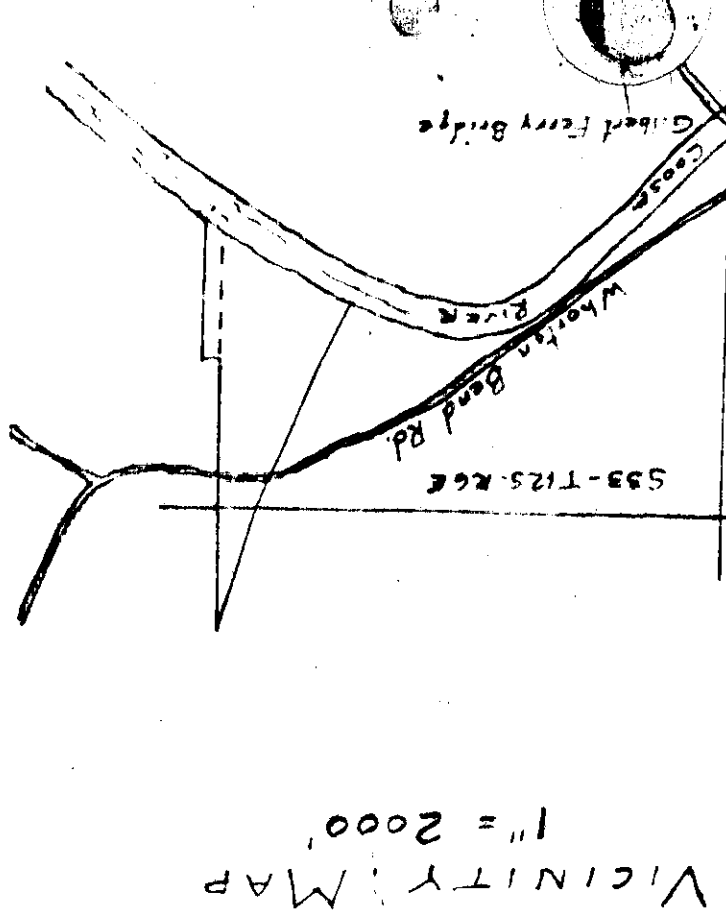
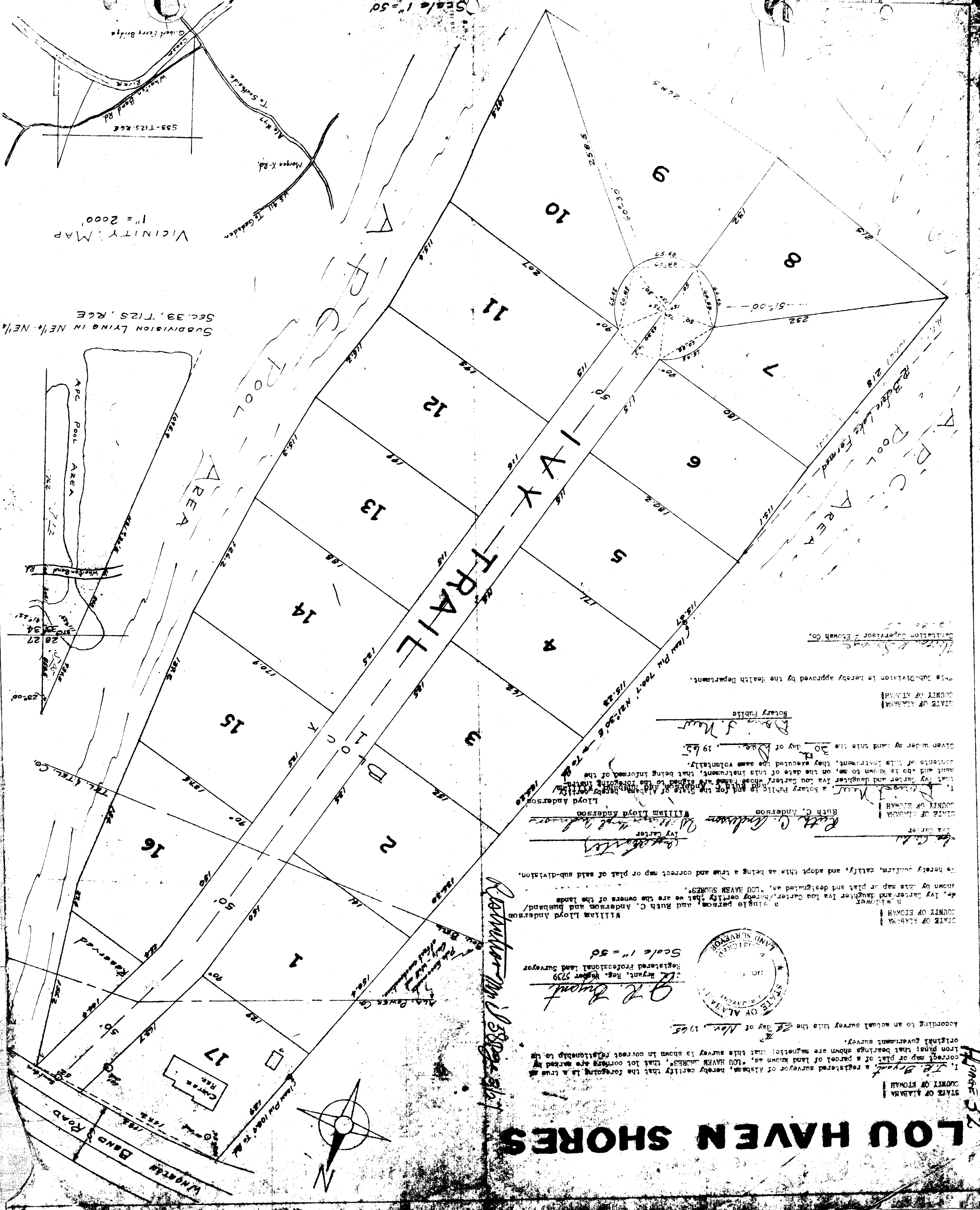
STATE OF ALABAMA
COUNTY OF ELOWAH
I, William Lloyd Anderson, a single person, and Ruth C. Anderson and husband/
my daughter, hereby certify that we are the owners of the lands
shown by this map or plat and designed as, "LOU HAVEN SHORES".

we hereby confirm, ratify, and adopt this as being a true and correct map or plat of said sub-division.
In witness whereof, we have hereunto set our hands and seals at our home in the County of Elowah, State of Alabama, this 20th day of Nov. 1965.

William Lloyd Anderson
Ruth C. Anderson
Notary Public

STATE OF ALABAMA
COUNTY OF ELOWAH
Notary Public
This sub-division is hereby approved by the Health Department.

Health Department - Elowah Co.



VICINITY MAP
1" = 2000'
SUBDIVISION LYING IN NE 1/4, NE 1/4
SEC. 33, T12S, R6E

