



LEGEND

Iron Pin  
100'

State of Alabama,  
County of Etowah;  
Covered & located and with SEGIS RECORD, BEING THE  
CORNER OF THE TRACT OF LAND AS THE SAME SUB-DIVISION  
ON NEARBY SURVEY, BEING THE

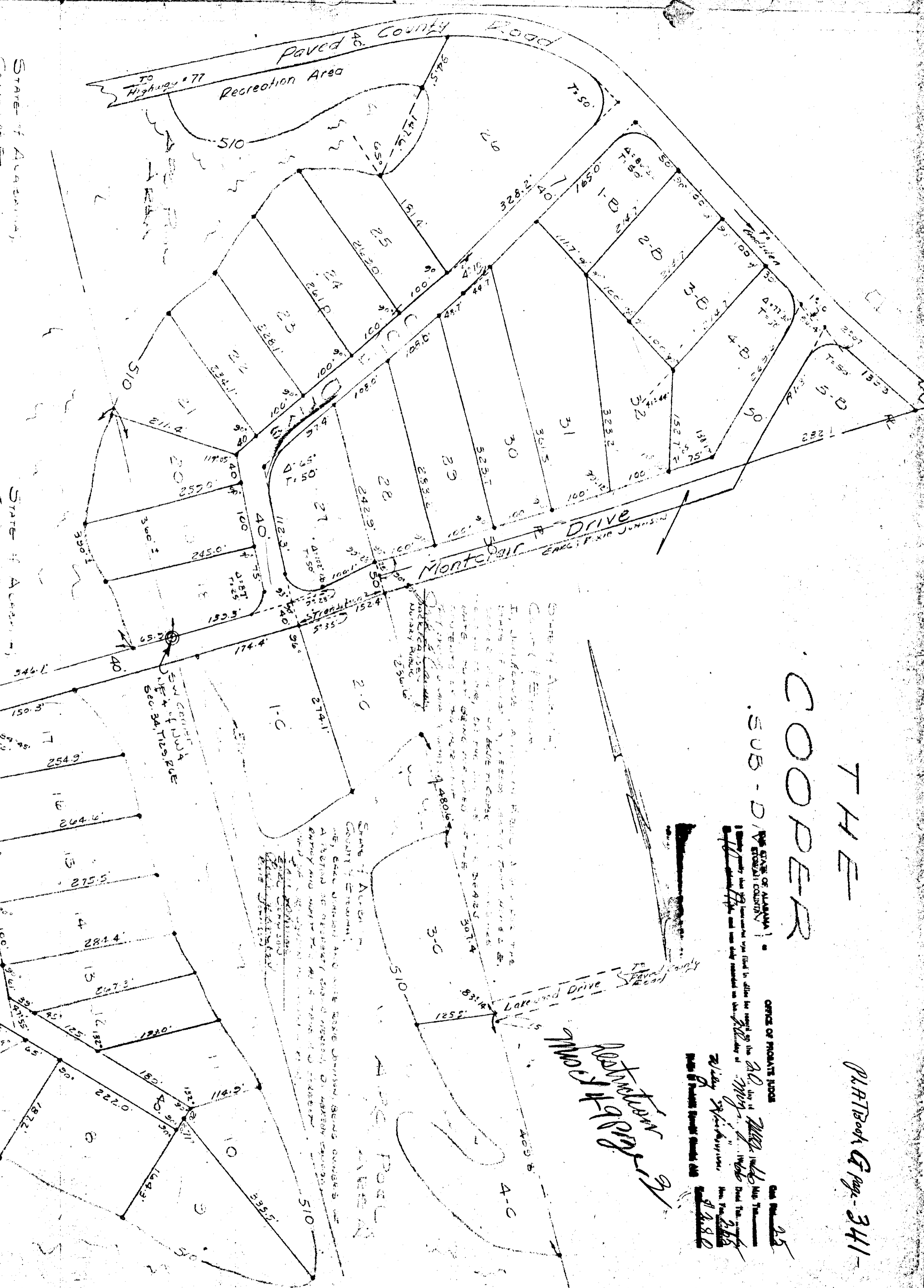
State of Alabama,  
County of Etowah;  
Covered & located and with SEGIS RECORD, BEING THE  
CORNER OF THE TRACT OF LAND AS THE SAME SUB-DIVISION  
ON NEARBY SURVEY, BEING THE

State of Alabama,  
County of Etowah;  
Covered & located and with SEGIS RECORD, BEING THE  
CORNER OF THE TRACT OF LAND AS THE SAME SUB-DIVISION  
ON NEARBY SURVEY, BEING THE

STATE OF ALABAMA,  
COUNTY OF ETOWAH,  
I, SHERIFF ROBERT W. HARRIS, SHERIFF  
OF SAID COUNTY, BEING SEEN BY THE SEVERAL  
ADJUTANTS AND DEPUTIES OF SAID COUNTY  
AND BEING CONVINCED THAT THE SAID  
PLAT FOR SAID TRACT HAS BEEN CORRECTLY  
LAIN AND THAT THE SAID ADJUTANTS AND  
DEPUTIES ARE WELL VERSED IN THE  
LAW AND EQUITY OF SAID STATE, I  
HEREBY CERTIFY THAT THE SAID PLAT  
IS A TRUE AND CORRECT REPRESENTATION  
OF THE SAID TRACT AS THE SAME  
SUB-DIVISION ON NEARBY SURVEY,  
BEING THE

STATE OF ALABAMA,  
COUNTY OF ETOWAH,  
I, SHERIFF ROBERT W. HARRIS, SHERIFF  
OF SAID COUNTY, BEING SEEN BY THE SEVERAL  
ADJUTANTS AND DEPUTIES OF SAID COUNTY  
AND BEING CONVINCED THAT THE SAID  
PLAT FOR SAID TRACT HAS BEEN CORRECTLY  
LAIN AND THAT THE SAID ADJUTANTS AND  
DEPUTIES ARE WELL VERSED IN THE  
LAW AND EQUITY OF SAID STATE, I  
HEREBY CERTIFY THAT THE SAID PLAT  
IS A TRUE AND CORRECT REPRESENTATION  
OF THE SAID TRACT AS THE SAME  
SUB-DIVISION ON NEARBY SURVEY,  
BEING THE

STATE OF ALABAMA,  
COUNTY OF ETOWAH,  
I, SHERIFF ROBERT W. HARRIS, SHERIFF  
OF SAID COUNTY, BEING SEEN BY THE SEVERAL  
ADJUTANTS AND DEPUTIES OF SAID COUNTY  
AND BEING CONVINCED THAT THE SAID  
PLAT FOR SAID TRACT HAS BEEN CORRECTLY  
LAIN AND THAT THE SAID ADJUTANTS AND  
DEPUTIES ARE WELL VERSED IN THE  
LAW AND EQUITY OF SAID STATE, I  
HEREBY CERTIFY THAT THE SAID PLAT  
IS A TRUE AND CORRECT REPRESENTATION  
OF THE SAID TRACT AS THE SAME  
SUB-DIVISION ON NEARBY SURVEY,  
BEING THE



# THE COOPER

Plat Book of page 341-

OFFICE OF PROBATE JUDGE  
COUNTY OF ETOWAH, ALABAMA  
I, PROBATE JUDGE W. H. COOPER, BEING SEEN BY THE SEVERAL  
ADJUTANTS AND DEPUTIES OF SAID COUNTY, AND BEING CONVINCED  
THAT THE SAID PLAT FOR SAID TRACT HAS BEEN CORRECTLY LAIN  
AND THAT THE SAID ADJUTANTS AND DEPUTIES ARE WELL VERSED  
IN THE LAW AND EQUITY OF SAID STATE, I HEREBY CERTIFY THAT  
THE SAID PLAT IS A TRUE AND CORRECT REPRESENTATION OF THE  
SAID TRACT AS THE SAME SUB-DIVISION ON NEARBY SURVEY,  
BEING THE

*W. H. Cooper*  
Probate Judge