

Approved for the City of Etowah: *W. H. ...*  
 City Engineer  
 Approved for the City of Etowah: *W. H. ...*  
 Planning Commission

*J. P. ...*  
 Notary Public  
 State of Alabama  
 My commission expires on the 1st day of ... 19...

*James ...*  
*Thomas ...*  
*Company ...*

This is to certify that the above described property is the same as shown on the plat of the same filed for record in the office of the Etowah County Clerk on the 1st day of ... 19...

This is to certify that the above described property is the same as shown on the plat of the same filed for record in the office of the Etowah County Clerk on the 1st day of ... 19...

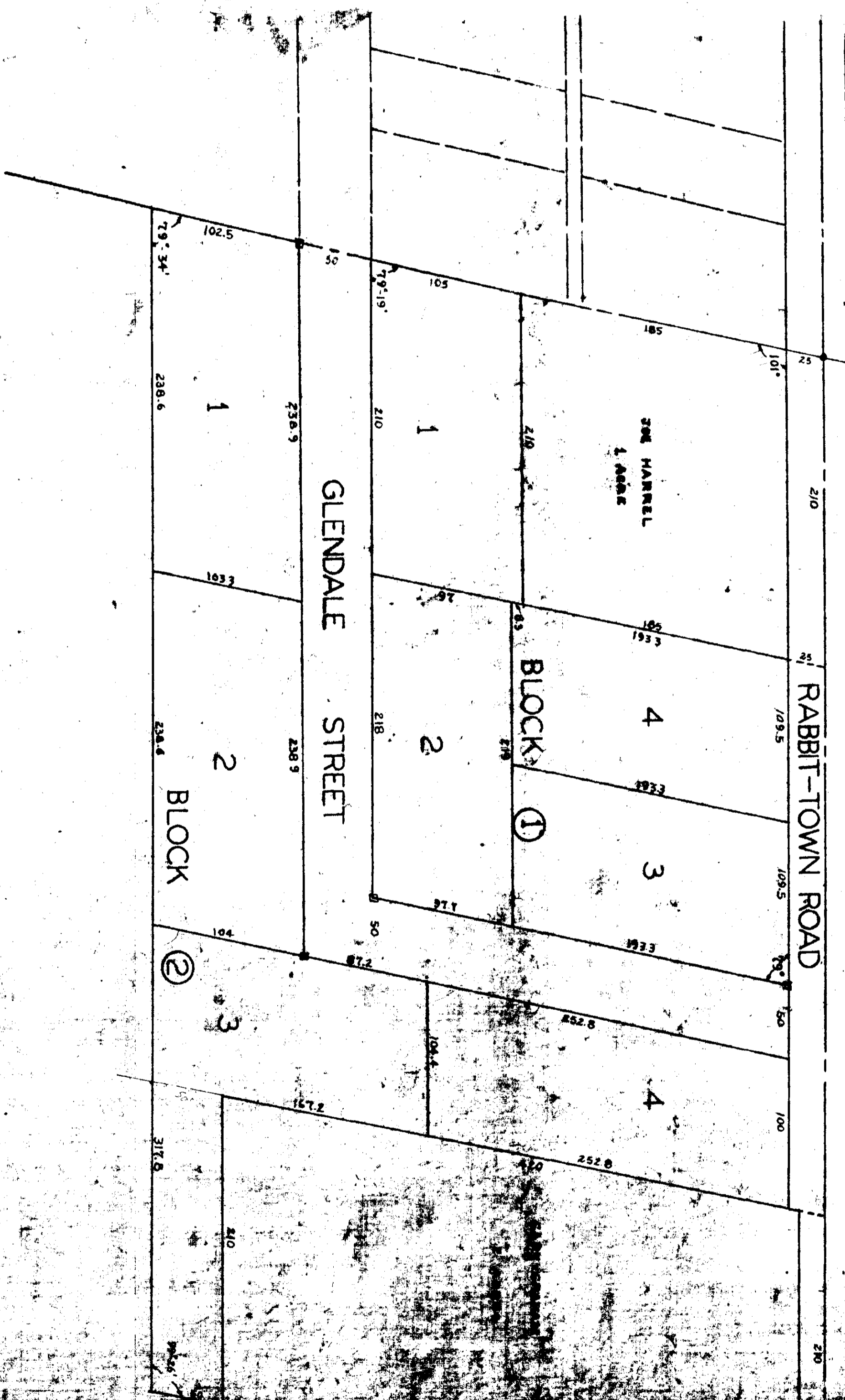
This is to certify that the above described property is the same as shown on the plat of the same filed for record in the office of the Etowah County Clerk on the 1st day of ... 19...

This is to certify that the above described property is the same as shown on the plat of the same filed for record in the office of the Etowah County Clerk on the 1st day of ... 19...

This is to certify that the above described property is the same as shown on the plat of the same filed for record in the office of the Etowah County Clerk on the 1st day of ... 19...

This is to certify that the above described property is the same as shown on the plat of the same filed for record in the office of the Etowah County Clerk on the 1st day of ... 19...

This is to certify that the above described property is the same as shown on the plat of the same filed for record in the office of the Etowah County Clerk on the 1st day of ... 19...



STATE OF ALABAMA  
 Etowah County  
 Office of Etowah County Clerk  
 My commission expires on the 1st day of ... 19...

**HALE SUBDIVISION**

being in the NE 1/4 of the NW 1/4 of Sec. 13 T25 R6E  
 Etowah County, Alabama

SCALE 1" = 60'