

I, the undersigned, Registered Civil Engineer & Surveyor, hereby certify that I made a survey of the premises shown to sections and subdivided as Lots 2, 3 & 4 of DEAN'S ADDITION to sections 2, 3 & 4 of the 22nd range and 1st subdivision of the 11th meridian, T. 14 N., R. 14 W., 22nd N. of the 1st East Range according to the map of record of record in plat book 5, page 135 in the county of Etowah, Ga. and this certificate does not apply to any other plat book. I am satisfied that the boundaries shown in this map are correct and that the same are in conformity with the original Government survey of Etowah Co. Ga. which shows its relation to the 11th meridian. This is Oct 25, 1963.

Surveyor  
E. H. Lee

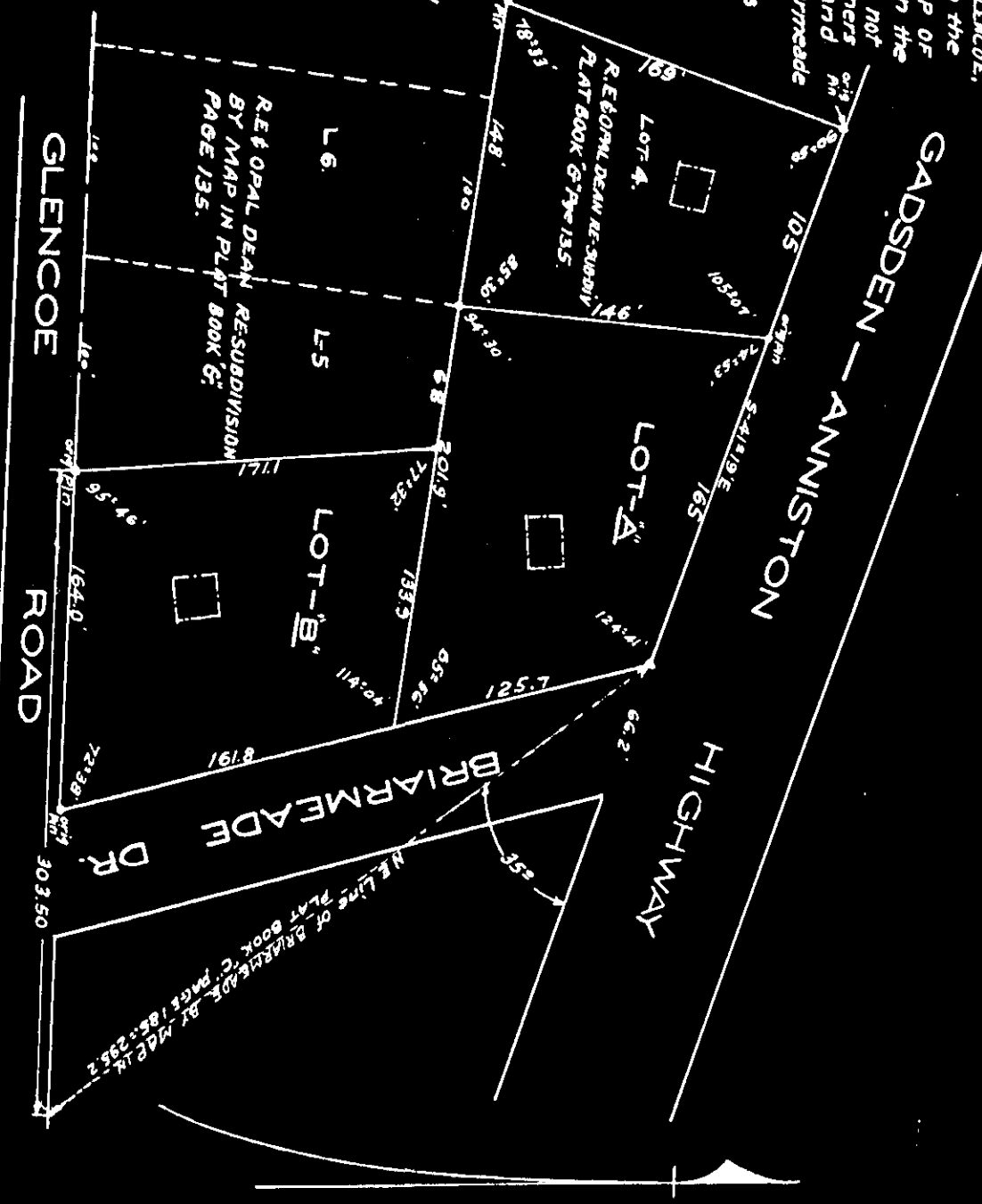
I, the undersigned, Clerk of the Superior Court of Etowah County, Georgia, do hereby certify that the above is a true and correct copy of the original survey and plat of the same as filed in my office on the 27th day of October, 1963.

Owner  
A. E. Glenn

2. The fact that said county hereby certifies that the same is a true and correct copy of the original survey and plat of the same as filed in my office on the 27th day of October, 1963. I am satisfied that the boundaries shown in this map are correct and that the same are in conformity with the original Government survey of Etowah Co. Ga. which shows its relation to the 11th meridian. This is Oct 25, 1963.

BY  
E. H. Lee, C. E. & S.  
GADSDEN - ALA.

DEAN'S ADDITION Block C  
TO  
GLENCOE ALA.  
OCT 27 - 1963.



NOV 8 1963  
113