

THE THIRD ADDITION TO MONTE VISTA

UNIT TWO

GADSDEN, ALABAMA

STATE OF ALABAMA:

COUNTY OF ETOWAH:

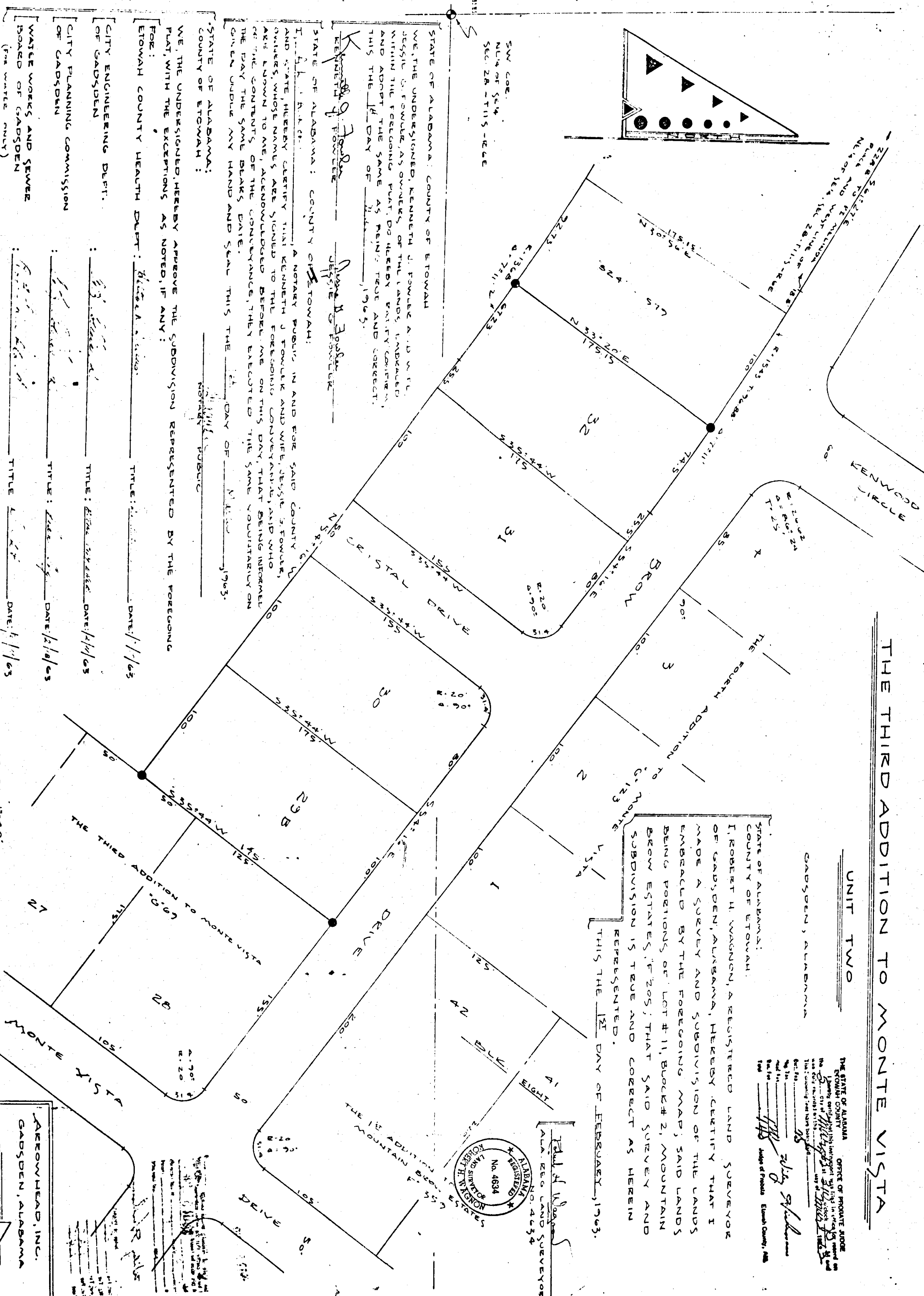
I, ROBERT H. WATSON, A REGISTERED LAND SURVEYOR OF GADSDEN, ALABAMA, HEREBY CERTIFY THAT I MADE A SURVEY AND SUBDIVISION OF THE LANDS EMBRACED BY THE FOREGOING MAP, SAID LANDS BEING PORTIONS OF LOT #11, BLOCK #2, MOUNTAIN BROW ESTATES, F-205, THAT SAID SURVEY AND SUBDIVISION IS TRUE AND CORRECT AS HEREIN REPRESENTED.

THIS THE 21 DAY OF FEBRUARY, 1963.

THE STATE OF ALABAMA
OFFICE OF PUBLIC JOBS
ETOWAH COUNTY
COUNTY CLERK
I have this day filed for record the foregoing plat of subdivision of land in Etowah County, Alabama, and the same is hereby certified to be correct and true.

W. H. [Signature]
County Clerk

Robert H. Watson
ALABAMA
No. 4834
REGISTERED
LAND SURVEYOR



STATE OF ALABAMA: COUNTY OF ETOWAH:
I, Robert H. Watson, a Notary Public in and for said County of Etowah, do hereby certify that the foregoing plat of subdivision of land is true and correct as herein represented.

STATE OF ALABAMA: COUNTY OF ETOWAH:
I, Robert H. Watson, a Notary Public in and for said County of Etowah, do hereby certify that the foregoing plat of subdivision of land is true and correct as herein represented.

WE, THE UNDERSIGNED, HEREBY APPROVE THE SUBDIVISION REPRESENTED BY THE FOREGOING PLAT WITH THE EXCEPTIONS AS NOTED, IF ANY:

ETOWAH COUNTY HEALTH DEPT.: Richard A. ... DATE: 2/1/63

CITY ENGINEERING DEPT. OF GADSDEN: ... DATE: 2/1/63

CITY PLANNING COMMISSION OF GADSDEN: ... DATE: 2/1/63

WATER WORKS AND SEWER BOARD OF GADSDEN (FOR WATER ONLY): ... DATE: 2/1/63

AREOWHEAD, INC.
GADSDEN, ALABAMA

SCALE - 1"=40'