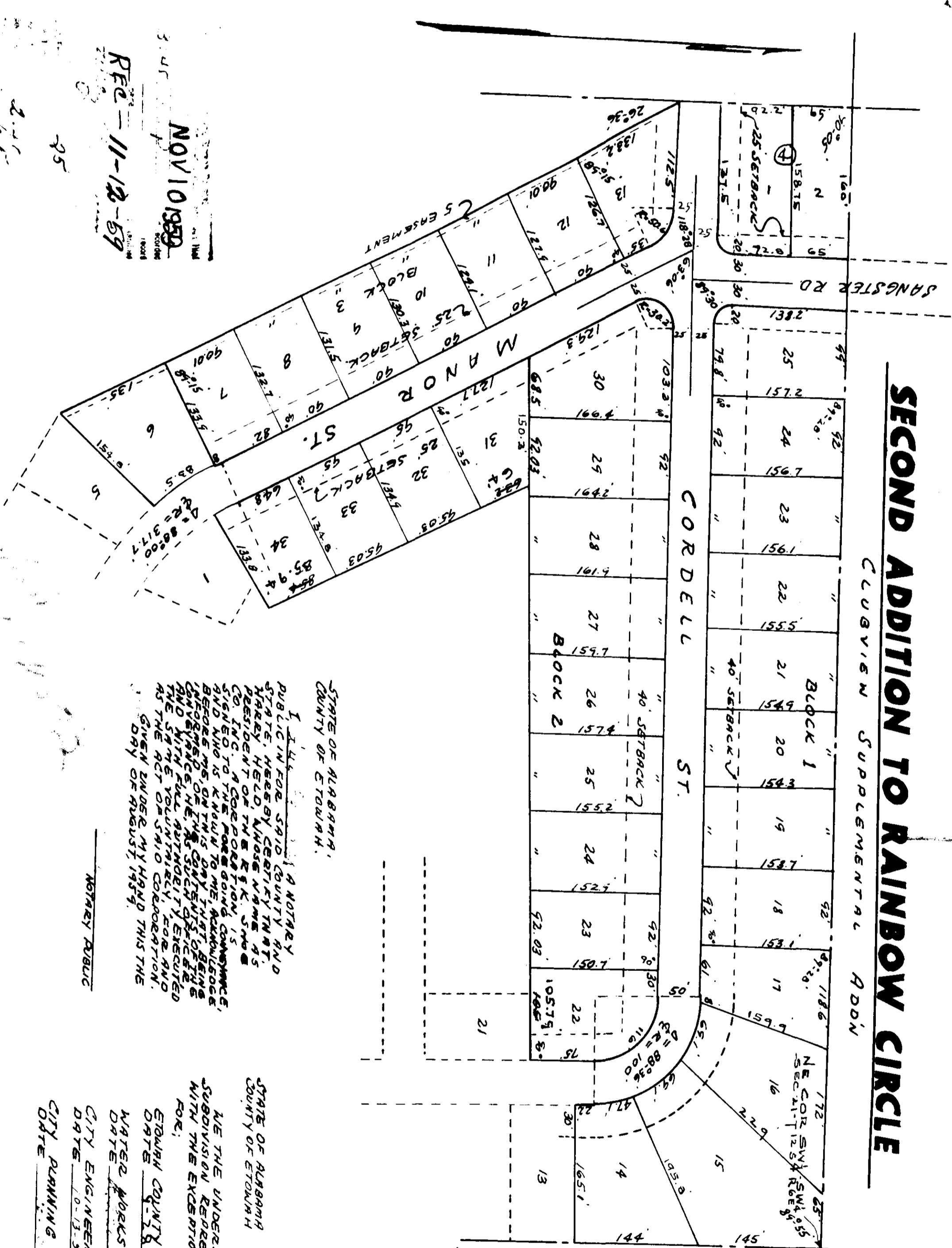


**SECOND ADDITION TO RAINBOW CIRCLE**  
 CUBVIAN SUPPLEMENTAL ADDN

C-95



STATE OF ALABAMA,  
 COUNTY OF ETOWAH.

I, WALTER H. TUCKER, A NOTARY PUBLIC IN AND FOR THE COUNTY AND STATE OF ALABAMA, do hereby certify that the foregoing plat is a true and correct copy of the original plat as the same appears in my office, and that the same was duly recorded in my office on the 25th day of August, 1959.

WALTER H. TUCKER  
 Notary Public

STATE OF ALABAMA,  
 COUNTY OF ETOWAH.

I, HOMER H. TUCKER, a Registered Engineer, Licensed Professional, in and for the County and State of Alabama, do hereby certify that the foregoing plat is a true and correct copy of the original plat as the same appears in my office, and that the same was duly recorded in my office on the 25th day of August, 1959.

HOMER H. TUCKER  
 Registered Professional Engineer

STATE OF ALABAMA,  
 COUNTY OF ETOWAH.

THE UNDERSIGNED, THE B.E.K. SUBDIVISION COMPANY, a corporation organized under the laws of the State of Alabama, do hereby certify that the foregoing plat is a true and correct copy of the original plat as the same appears in my office, and that the same was duly recorded in my office on the 25th day of August, 1959.

R.E. SHUB CO. INC.  
 Secretary

STATE OF ALABAMA,  
 COUNTY OF ETOWAH.

WE THE UNDERSIGNED, HEREBY APPROVE THE SUBDIVISION REPRESENTED BY THE FOREGOING PLAT FOR THE EXHIBITION AS NOTED, IN ANY CITY OR COUNTY WHERE THE SAME MAY BE OFFERED FOR SALE.

WALTER H. TUCKER  
 Registered Professional Engineer

HOMER H. TUCKER  
 Registered Professional Engineer

R.E. SHUB CO. INC.  
 Secretary

CITY ENGINEER OF GADSDEN: \_\_\_\_\_  
 DATE: \_\_\_\_\_

CITY PLANNING COMMISSION OF GADSDEN: \_\_\_\_\_  
 TITLE: \_\_\_\_\_

NOV 10 1959  
 REC-11-12-59