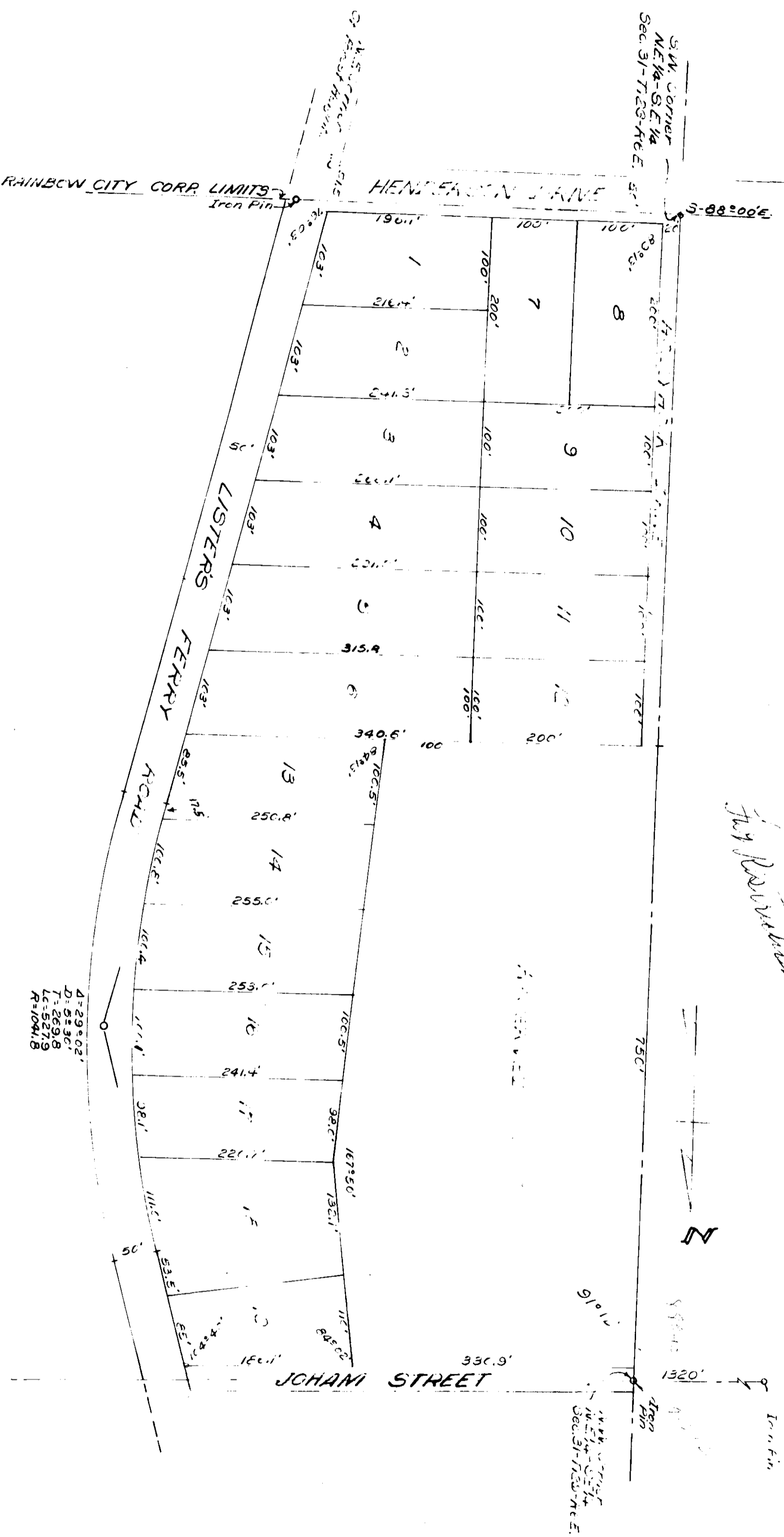


HOLLYHOOD HILLS
ADDITION TO RAINBOW CITY
BEING IN THE NE 1/4 - SE 1/4
SEC. 31 - T12S - R10E
SCALE - 1" = 100'

By Rainbow City, Twp 12 S, Range 10 E

F 393



I, P. H. Ryan, a registered land surveyor of Alabama, certify that I made a survey of the property shown in the within Plat, and that the same is true and correct as herein represented. This January 5, 1957.

REG No. 2656

Whereas the Property embraced in this subdivision do hereby ratify, confirm and adopt this Plat and survey as being true and correct.

This 1st day of January 1957

I, Notary Public in and for State of Alabama, hereby certify that the within plat is signed to the within instrument and who is known to me, the contents of said instrument executed the same voluntarily on the date the same bears date.

JAN 15 1957
 2:40

Restrictions: Building lines to be a minimum of 40 ft from all front lines, 10 ft from all side lines

185
 150