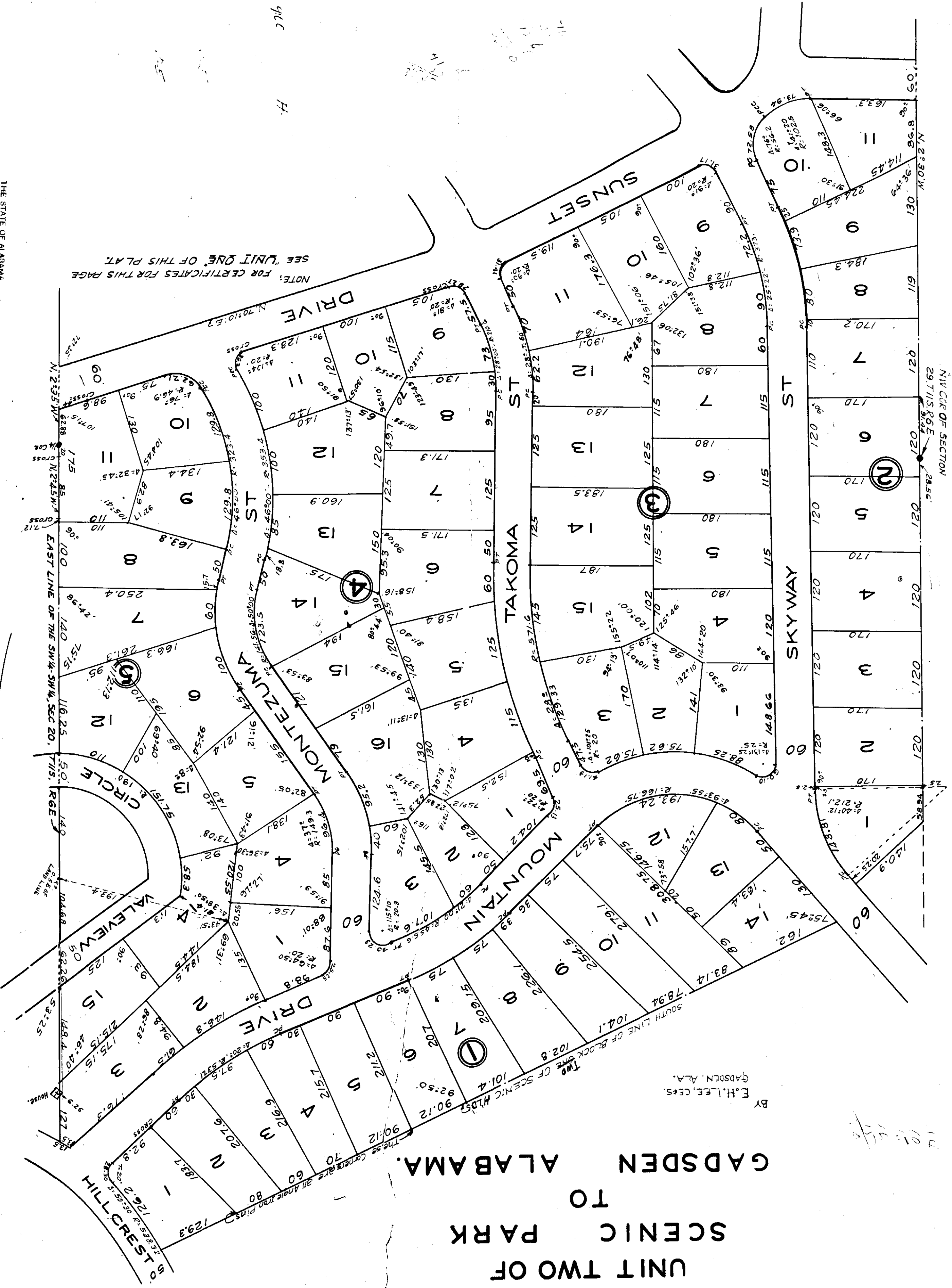


UNIT TWO OF  
SCENIC PARK  
TO  
GADSDEN ALABAMA.

BY  
E. H. LEE, C.E.S.  
GADSDEN, ALA.



NOTE: FOR CERTIFICATES FOR THIS PLAT  
SEE "UNIT ONE OF THIS PLAT"

N 1/4 COR. OF SECTION  
29 T 15 S R 24 E  
28.56'

*For Plat Book No. 10 per 1/14*

F-239

THE STATE OF ALABAMA,  
ETOWAH COUNTY  
OFFICE OF PROBATE JUDGE  
I, W. L. Spivey, Probate Judge of Etowah County, Alabama, do hereby certify that the instrument was filed in office pursuant to the provisions of Chapter 108 at 10:18 a.m. on the 10th day of April, 1937.  
The following fees have been paid:  
Court fee 25  
Notary fee 3.00  
Total 3.25  
W. L. Spivey, Probate Judge, Etowah County, Ala.  
844920 977