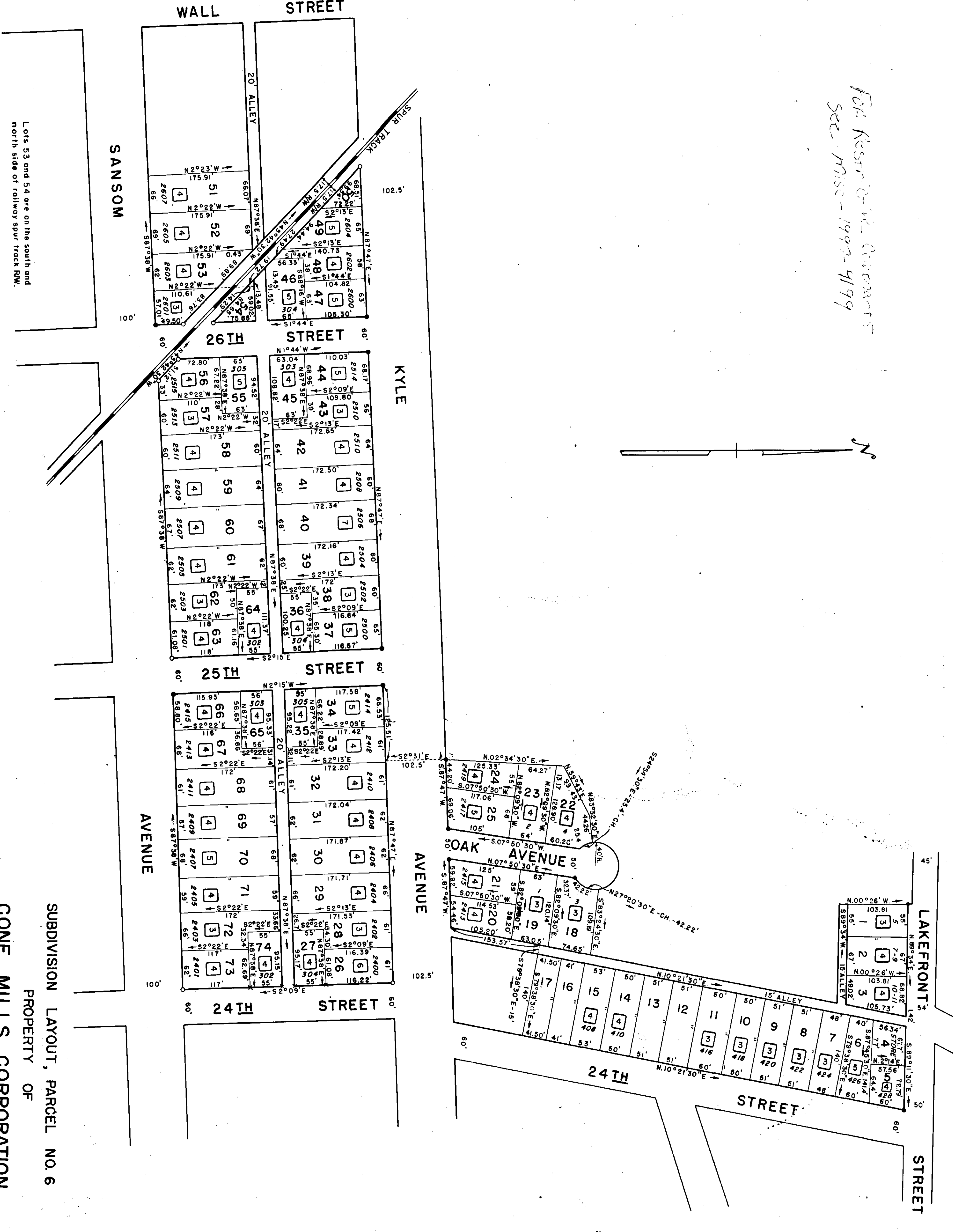


FOR RESUB-DIVISION ACCOUNTS
SEC. 114-399-1992-4199



STREET DEDICATION-WISC.114-399

F-61

Lots 53 and 54 are on the south and north side of railway spur track RM.

SUBDIVISION LAYOUT, PARCEL NO. 6

PROPERTY OF

CONE MILLS CORPORATION

DWIGHT DIVISION ALABAMA CITY, ALABAMA

SCALE: 1"=100'

SHEET 6 OF 8 SHEETS

SEP. 1951
SOUTHERN MAPING AND ENGINEERING CO.
218 COMMERCIAL PLACE
GREENSBORO, N.C.