



I, T. L. SIMMONS, a Registered Land Surveyor, hereby certify that this is a true and correct map or plat of the lands contained herein as surveyed and platted by me.

Corners that are marked are put in concrete for permanent markers.

This the 22nd day of May, 1951.

T. L. Simmons
T. L. SIMMONS
Registered No. 840

WE, the owners of the property described, hereby ratifies and adopts this map or plat as being true and correct.

This the 22nd day of May, 1951.

Hurshel I. Arrington
HURSHEL I. ARRINGTON
Mary C. Arrington
MARY C. ARRINGTON

STATE OF ALABAMA:
ETOWAH COUNTY:

I, H. R. COSPER, a Notary Public in and for said County and State, hereby certify that Hurshel I. Arrington and wife, Mary C. Arrington, whose names are signed to the foregoing map or plat and who are known to me, acknowledged before me on this day that being informed of the contents of said map or plat they executed the same voluntarily.

Given under my hand and seal this the 22nd day of May, 1951.

H. R. Cosper
H. R. COSPER
Notary Public

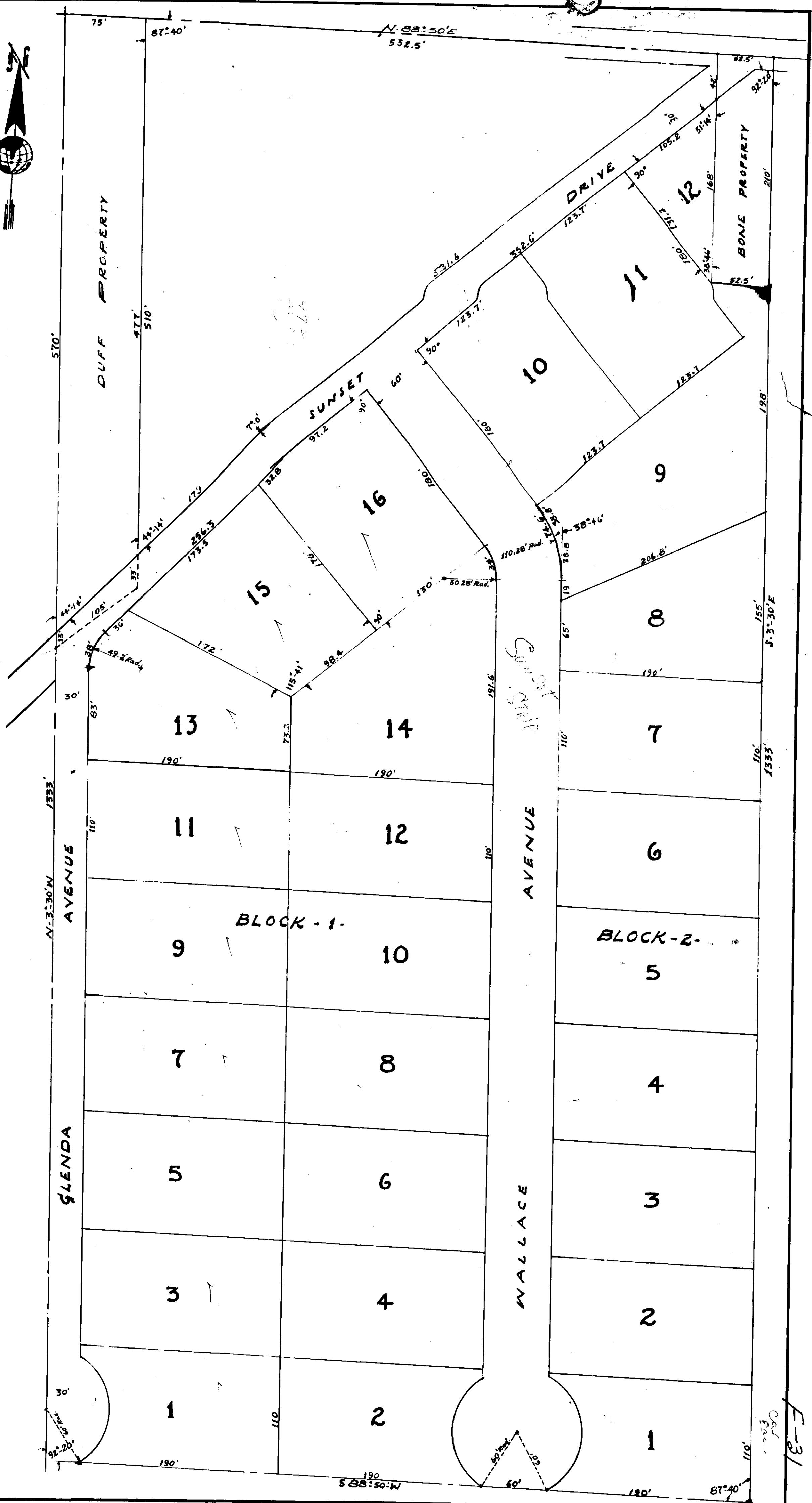
Approved for the City of Gadsden:

Approved for the City
Planning Commission

W. P. ...
City Engineer
May - 22 - 51

J. ...
President

THE STATE OF ALABAMA }
ETOWAH COUNTY }
I hereby certify that this instrument was filed in office for record on the 24 day of May 1951 at 10:40 o'clock A.M. and was duly recorded on the 24 day of May 1951 in Book 232 and examined. The following fees have been paid:
Not. Fee 2.00
Tax 2.00
Total 4.00
John J. Higgins
Notary Public, Etowah County, Ala.



ARRINGTON
SUB-DIVISION

Scale - 1" = 60' - 5/20/51
W 1/2 of NE 1/4 of SE 1/4 SEC 20 T-11-S R-6-E
ETOWAH COUNTY ALABAMA

F-31
CAL
5/22/51