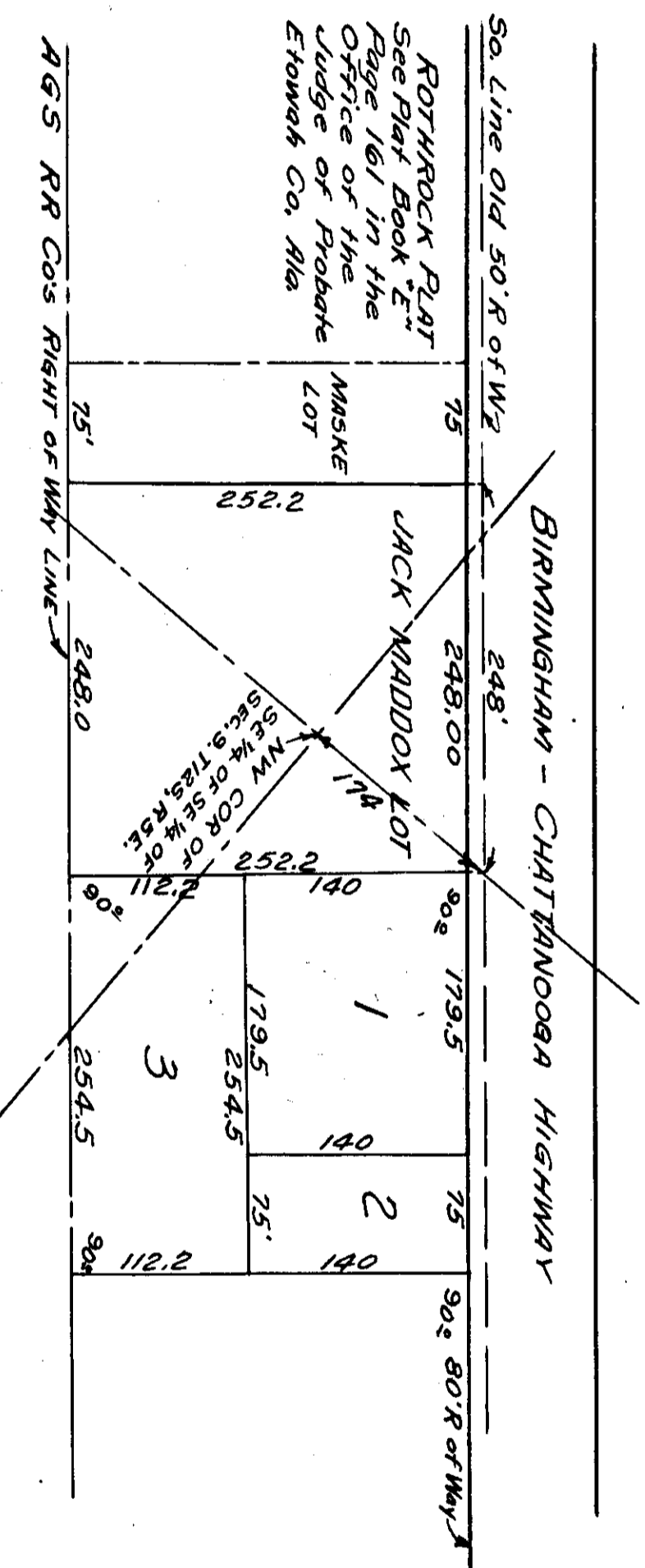


**H.B. SKELTON & CO. SUBDIVISION
OF A PORTION OF THE E 1/2 OF SE 1/4 OF
SECTION 9, T12S, R5E.
ATTALLA, ALA.**



I, E.H. Lee, A Civil Engineer and Surveyor, hereby Certify that I made a Survey of the Property contained in the within Plat and the same is true and correct as herein Represented with Relations to the Lines of the Original Government Survey, This The 10th Day Of Oct, 1950
E.H. Lee
Gadsden, Alabama. CE & Surveyor.

We H.B. SKELTON & CO Owners of the Property contained in the within Plat do hereby Ratify, Confirm and Adopt the said Plat and Survey as being true and correct. This The 10th Day Of October, 1950. H.B. SKELTON & CO.
By H.B. Skelton
Co. Owner

State Of Alabama:
County Of Etowah:
I, John W. Skelton a Notary Public in and for said State and County, Do hereby Certify that H.B. SKELTON, whose name is signed to the foregoing Instrument and who is known to me, acknowledged before me on this 10th Day of Oct, 1950, being informed of the contents of the said Instrument, he executed the same Voluntarily for and as the act of His own free will and accord.
Given under My Hand On This The 10th Day Of Oct, 1950
John W. Skelton
Notary Public.

File in office for record on the 11th of October, A.D. 1950 at 5:40. a.m. and duly recorded the 13th of October, 1950.

Frank A. Rogers

