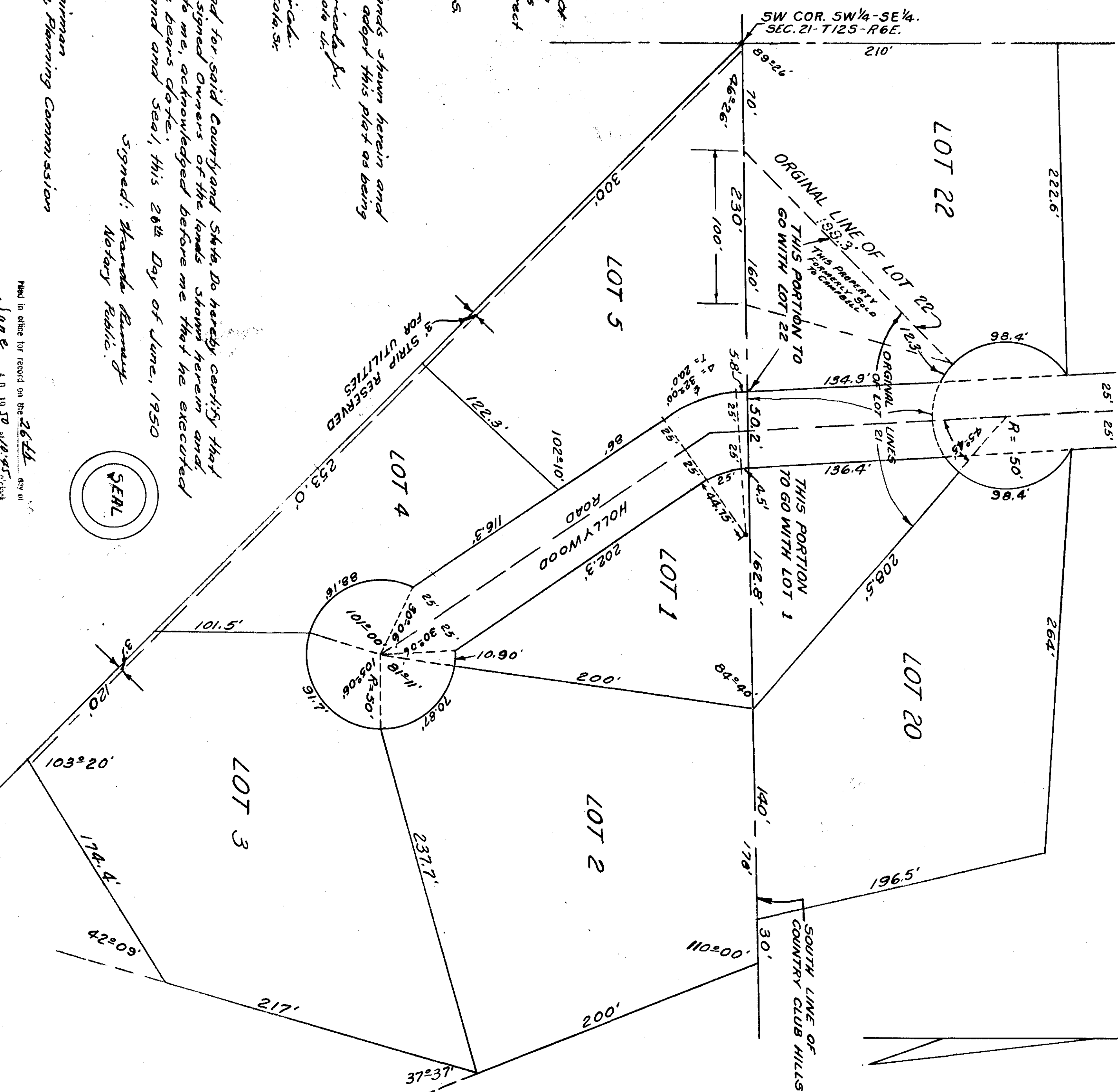


THE END ADDITION TO AND RE-ARRANGEMENT OF PORTIONS OF COUNTRY CLUB HILLS



STATE OF ALABAMA - COUNTY OF ETOWAH
 I, J. E. WATFORD a Registered Engineer Surveyor of
 Gadsden Ala. Hereby Certify that I have made an
 actual survey of the land shown herein on this
 map or plat and that the same is true and correct
 as shown.
 Given under my hand and seal this the
 21st Day of June, 1950.
 Signed: J. E. Watford C.E. & L.S.
 Ala. License No. 29

State Of Alabama,
 County Of Etowah,
 I, The Undersigned Owners of the lands shown herein and
 described on this plat, do hereby ratify and adopt this plat as being
 true and correct.
 Signed: Frank H. Quinton, Jr.
 Hugh W. Ryland, Sr.
 Signed: Floyd W. Givens, Jr.
 Hugh W. Ryland, Sr.

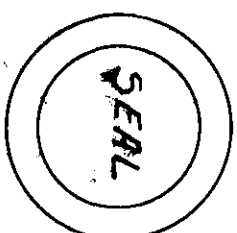
State Of Alabama,
 County Of Etowah,
 I, Wanda Ramsey a Notary Public in and for said County and State do hereby certify that
 on this day appeared before me the above signed Owners of the lands shown herein and
 described on this plat and being known to me, acknowledged before me that he executed
 the same voluntarily on the day the same bears date.
 Given under my hand and seal, this 26th Day of June, 1950

Signed: Wanda Ramsey
 Notary Public

Approved: J. M. F. Little

Fred W. Pitts, Chairman
 City of Gadsden Planning Commission

Approved: W. R. Hooks,
 W. R. Hooks,
 City Engineer



Filed in office for record on the 26th day of
 June A. D. 1950 at 10:45 A.M. Clock
 A. M. and duly recorded the 27th day of

Frank A. Fitzgerald
 Notary Public