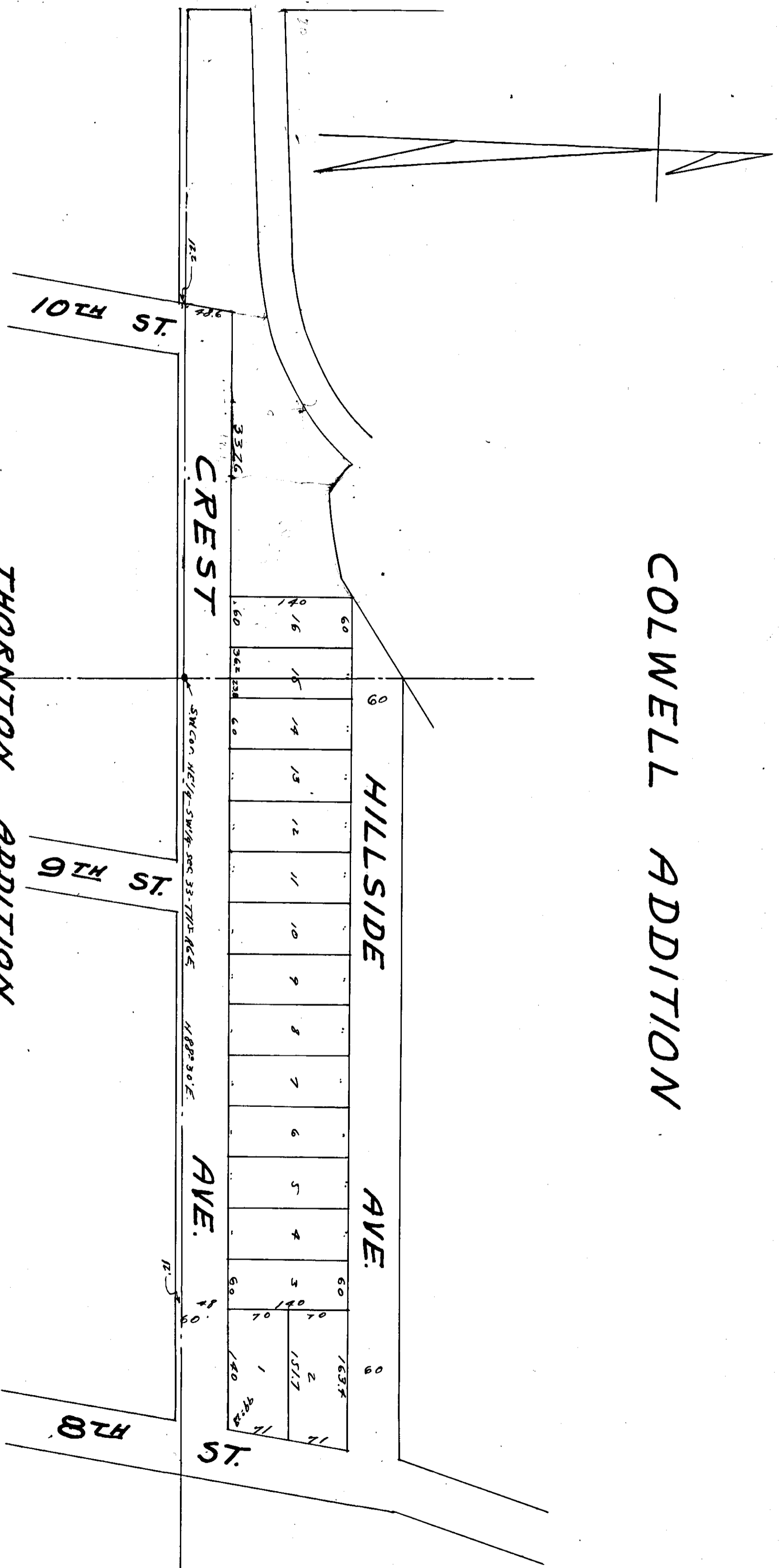


# COLWELL ADDITION



Thomas H. Taper, a registered land surveyor hereby certifies this to be a true and correct map of the property contained therein, that it correctly shows each lot and its number, length and width, and also the adjoining streets and their names. This is the 8th day of January 1928.

Signed: *Thomas H. Taper*  
cert. No. 877.

The undersigned, S. Swann, Clerk, owner of the property embraced in this map, hereby testifies and affirms that the same is a true and correct map.

This is the 8th day of January, 1928.  
Signed: *S. Swann* Clerk.

STATE OF MISSOURI:  
COUNTY OF EDWARDS:  
I, John S. Swann, a Notary Public in and for said State and County, hereby certify that Thomas H. Taper, whose name as land surveyor is set forth above, is an owner of land embraced in this map, and that he has acknowledged before me on this day that he has been informed of the contents of the same, and that he has executed the same in their respective capacities the day the same were given under my hand and seal this the 8th day of January 1928.

*John S. Swann*  
Notary Public.

Approved for the City of Goddard  
*W. H. H. H. H.*  
City Engineer

Approved for the City Planning Board  
*J. M. F. F.*  
Chairman.

Filed in office for record on the 9th day of Jan A. D. 1928 at 12:12 P. M. City of Goddard, Mo.  
A. M. and duly recorded the 10th day of Jan 1928  
Notary of Pender

*Thomas H. Taper*  
Owner in person