

RE-ARRANGEMENT MAP OF A PORTION OF  
MCCLAIN HEIGHTS  
RE-ARRANGEMENT OF LOTS 1, 2, 3, 4, 9, 10, 11, 12, 13,  
14, 15, 16, 17 & 18 LYING IN THE NW 1/4 - 5E 1/4 - 5E 1/4 - SEC 26 - T11S - R6E.  
Scale: 1" = 100'

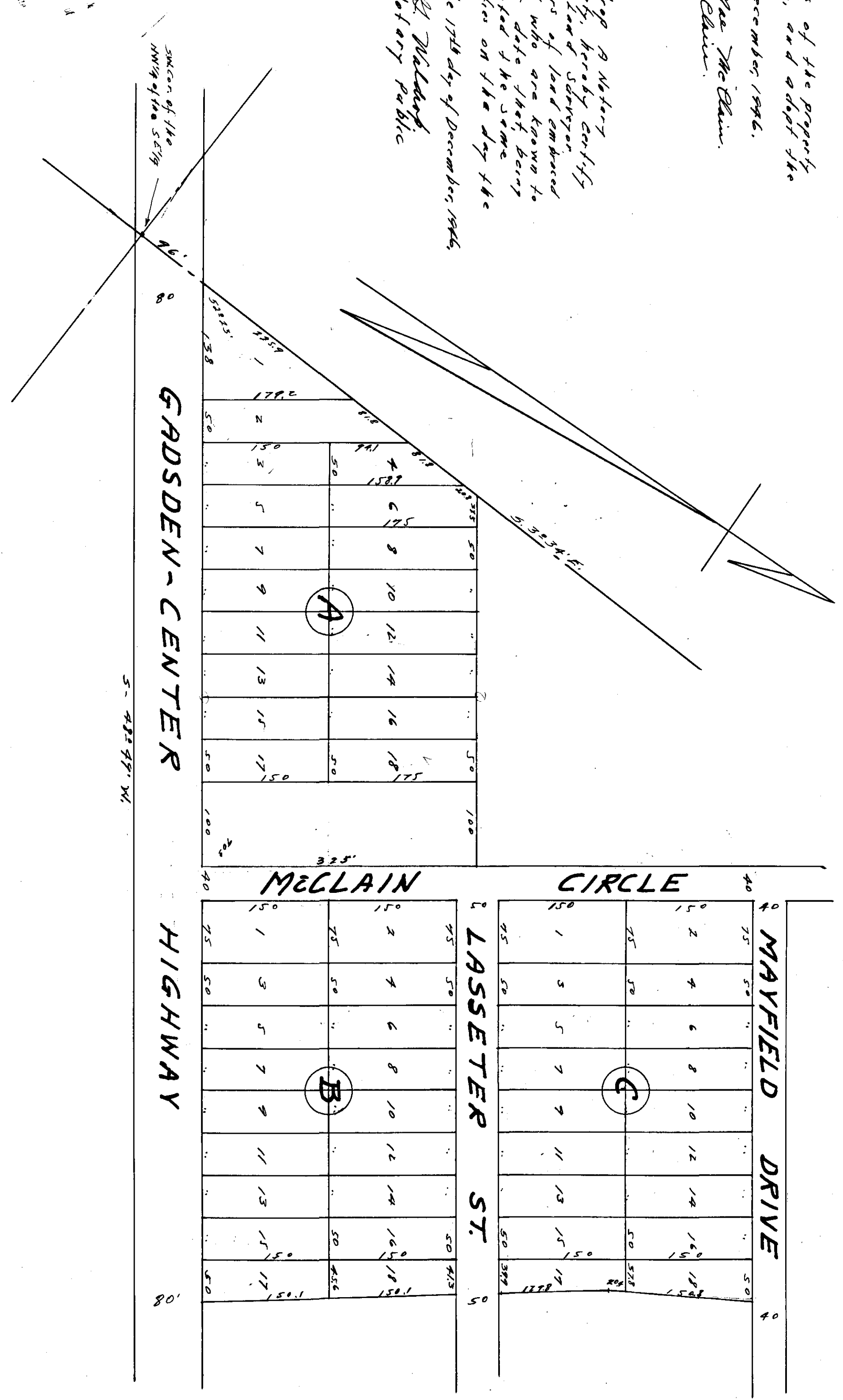
I, Homer H. Turner, a Registered Land Surveyor, hereby certify this to be a true and correct map of the property as surveyed by me, of December, 1926. This the 17th day of December, 1926.  
Homer H. Turner  
Reg. No. 879

We, Fannie Mae and Joe McClain, owners of the property embraced in this map, hereby certify, and adopt the same to be true and correct, this the 17th day of December, 1926.  
Fannie Mae McClain  
Joe McClain

STATE OF ALABAMA:  
COUNTY OF ETOWNA:  
I, M. G. Waldrop, a Notary Public in and for said State and County, hereby certify that Homer H. Turner whose name as Land Surveyor, and Fannie Mae and Joe McClain, owners of land embraced in this map are signed thereto, and who are known to me and acknowledged before me on this date, that being in full of the contents, they executed by the same voluntarily in their respective capacities on the day the same bears date.  
Given under my hand and seal, this the 17th day of December, 1926.  
M. G. Waldrop  
Notary Public

Approved: *W. R. K. L. L.*  
City Engineer

FILED IN THE OFFICE OF THE CLERK OF THE SUPERIOR COURT OF THE COUNTY OF ETOWNA, ALABAMA, THIS 11th DAY OF DECEMBER, 1926.  
Dec. 11 1926  
H. Dec. 11 1926  
Alo.



S-42299-W