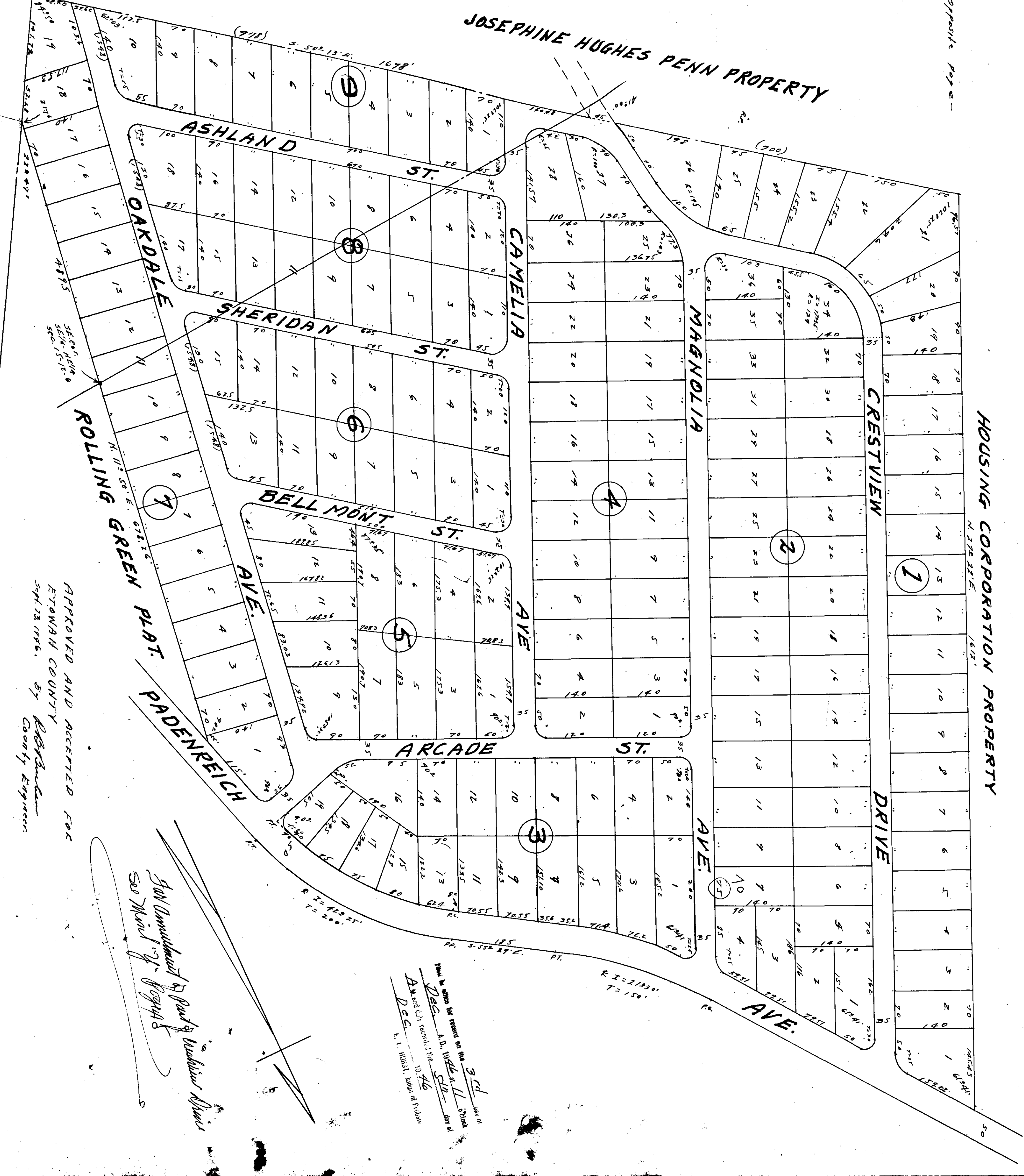


See Plat Lee Z, pg 1 604-5-6+7
for numbering of previous plats

**THE CRESTVIEW LAND CO'S ADDN.
TO GADSDEN - ETOWAH COUNTY - ALA.**
By E.H. Lee, C.E. Surveyor Gadsden, Ala. Sept. 22, 1946.

— Contingents on opposite page —



APPROVED AND ACCEPTED FOR
ETOWAH COUNTY
Sept. 22, 1946. By *E.H. Lee*
County Engineer

San Development by Paul G. Wadsworth, Surveyor
See Plat of *Lee*

Filed for record on the 3rd day of
Dec. A.D. 1946 at 11 o'clock
AM and City Record 174 46
E. I. HINSHAW, State of Alabama