

Scale 1" = 100'

COOSA RIVER

ABEL SUB-DIVISION
LYING IN SECTIONS 15&16-T1/2S-R 7E.

Continued on opposite page.

GADDEN - PIEDMONT HIGHWAY

ABEL BLVD.

OLD GAD-P. MONT ROAD

DIVISION ROAD

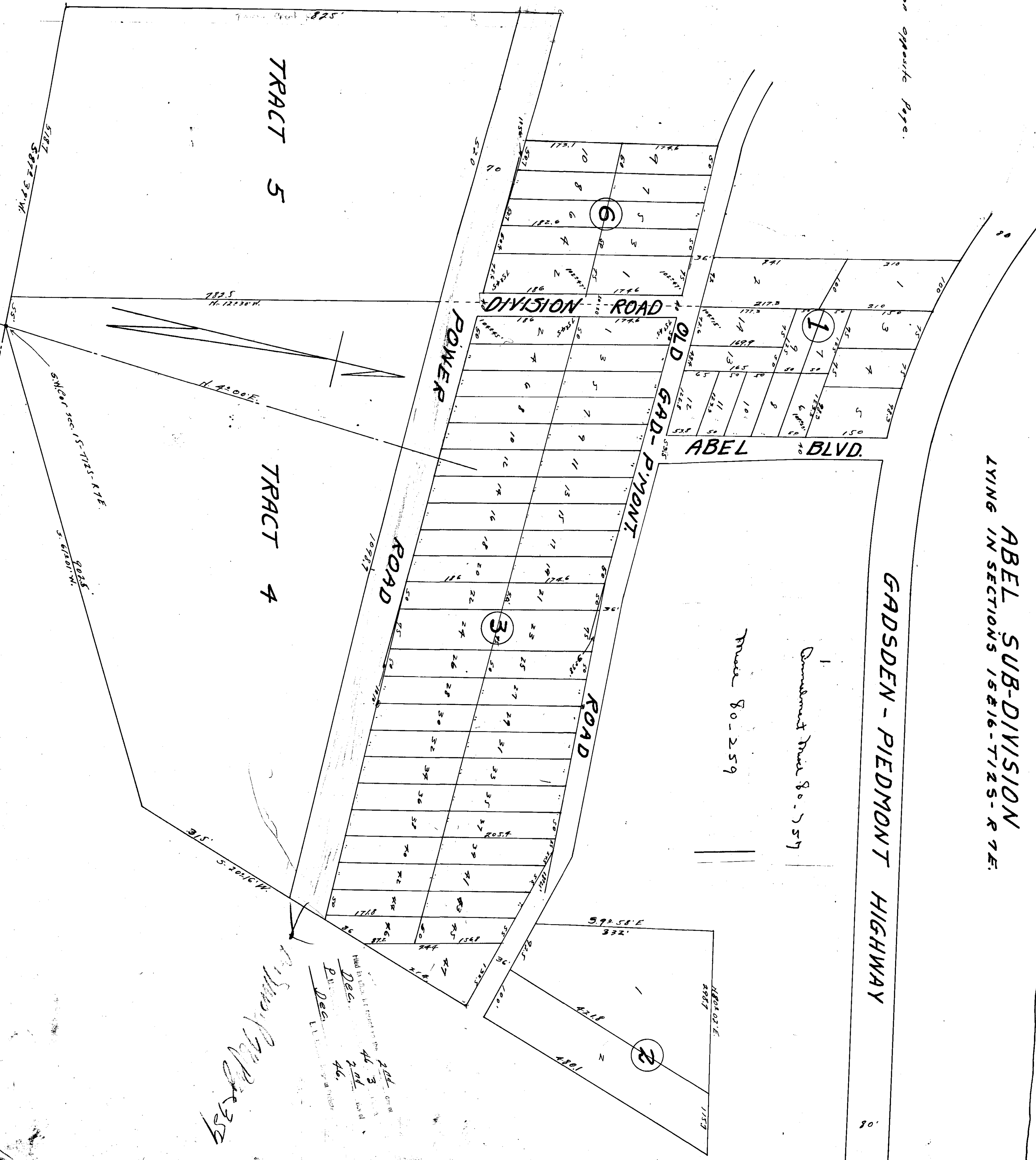
POWER ROAD

ROAD

TRACT 5

TRACT 4

1
Development tract 80-259



Filed in office of recorder on the
 Dec. 20, 1946
 P.M.
 Dec. 20, 1946
 L.L. [Signature]
 Recorder