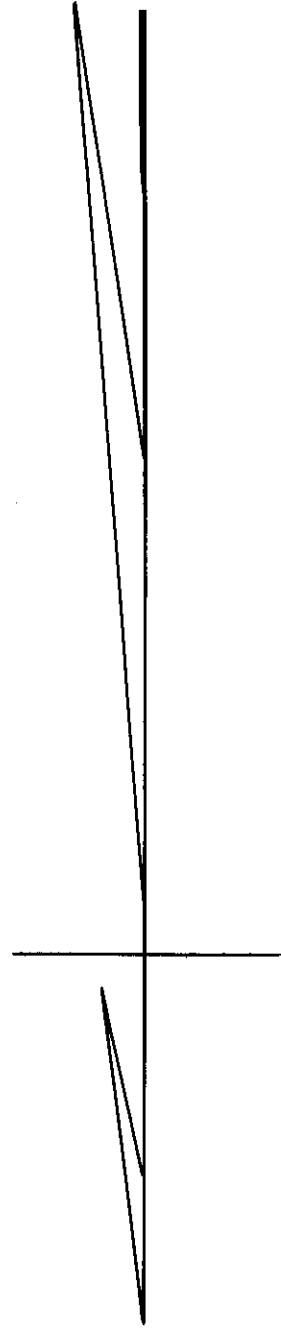


N.E. Corner of NE 1/4 - 56 1/2

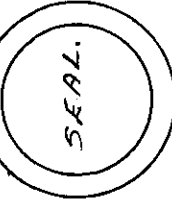
SUBDIVISION OF LANDS BELONGING TO J.L. LAY ETOWAH COUNTY, ALABAMA. Scale: 1"=100'



NE 1/4 of 5 E 1/4

I Certify that I have subdivided the above tract and that the angles and distances are correct to the best of my knowledge and ability.

April 12, 1946. *Harold L. Nally, Jr.*
Registered Land Surveyor



N.W. Corner of NE 1/4 - 56 1/2 - SEC. 22-7123-N7E of the Huntsville Meridian

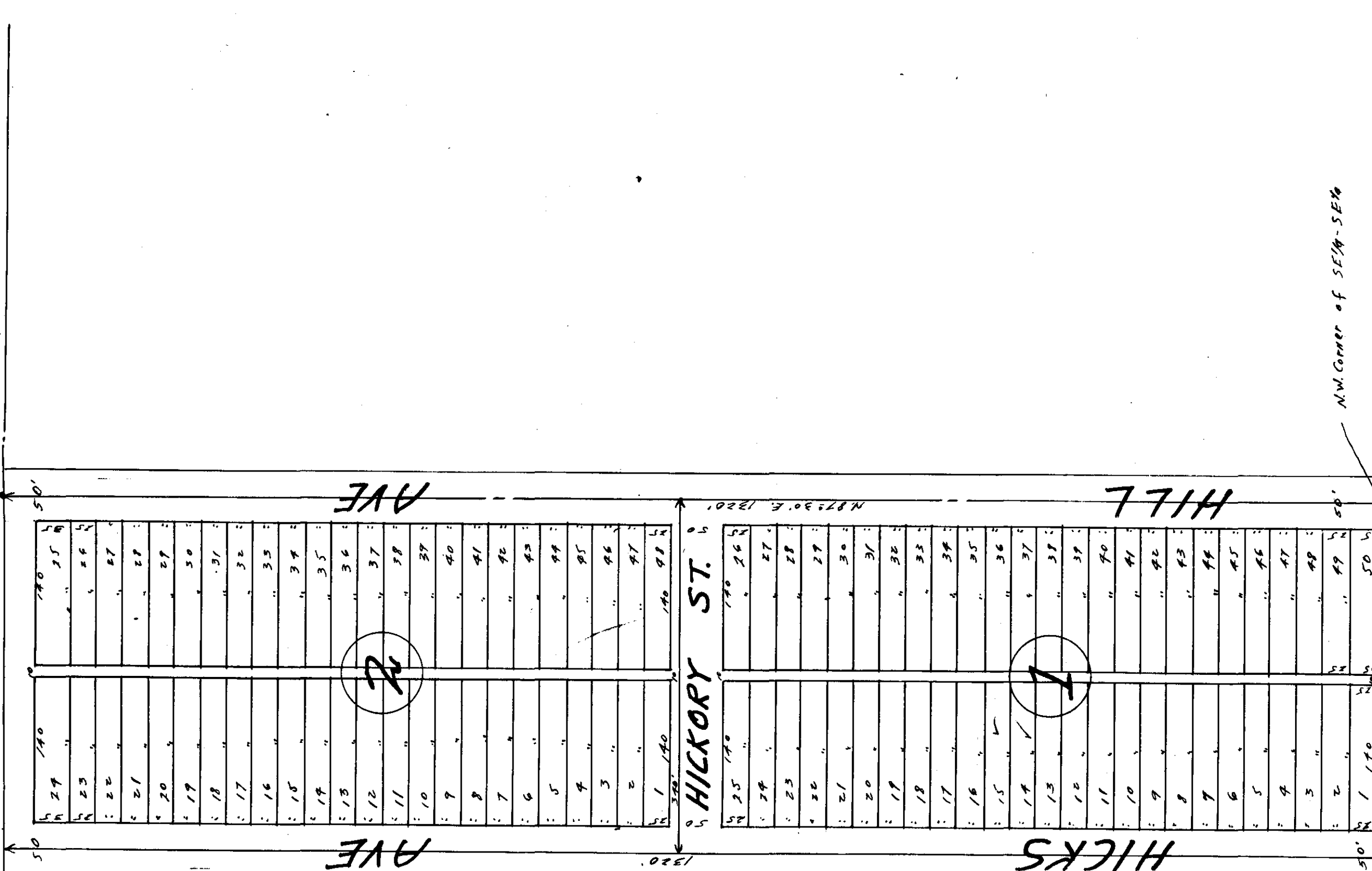
Center of Contact on E. of Road

Halloworth Property.

To Glancee

Chastonia Property.

East Property



Waiver of Violation of Restrictions Covenants
Miscel 95 Pages 3-13-15