

**PLAT OF
ADDITION
TO CITY OF GADSDEN AND
COUNTY OF ETOWAH -
STATE OF ALABAMA
LYING & BEING IN
SCALE: 1" = 100'**

I, Joseph W. Mills, a Registered Surveyor, do hereby certify that this is a true and correct copy of the plat as surveyed by me on the 6th day of July, 1925.

Signed - Joseph W. Mills Surveyor.

I, George F. Erwin, owner of the land hereon, do hereby certify that the same is as shown on the plat of the 23rd day of July, 1925.

Signed - George F. Erwin.

THE STATE OF ALABAMA
ETOWAH COUNTY
I, George F. Erwin, a Notary Public, do hereby certify that the same is as shown on the plat of the 23rd day of July, 1925, and that the same is as shown on the plat of the 23rd day of July, 1925, and that the same is as shown on the plat of the 23rd day of July, 1925.

Given under my hand and Notary Seal this 23rd day of July, 1925.

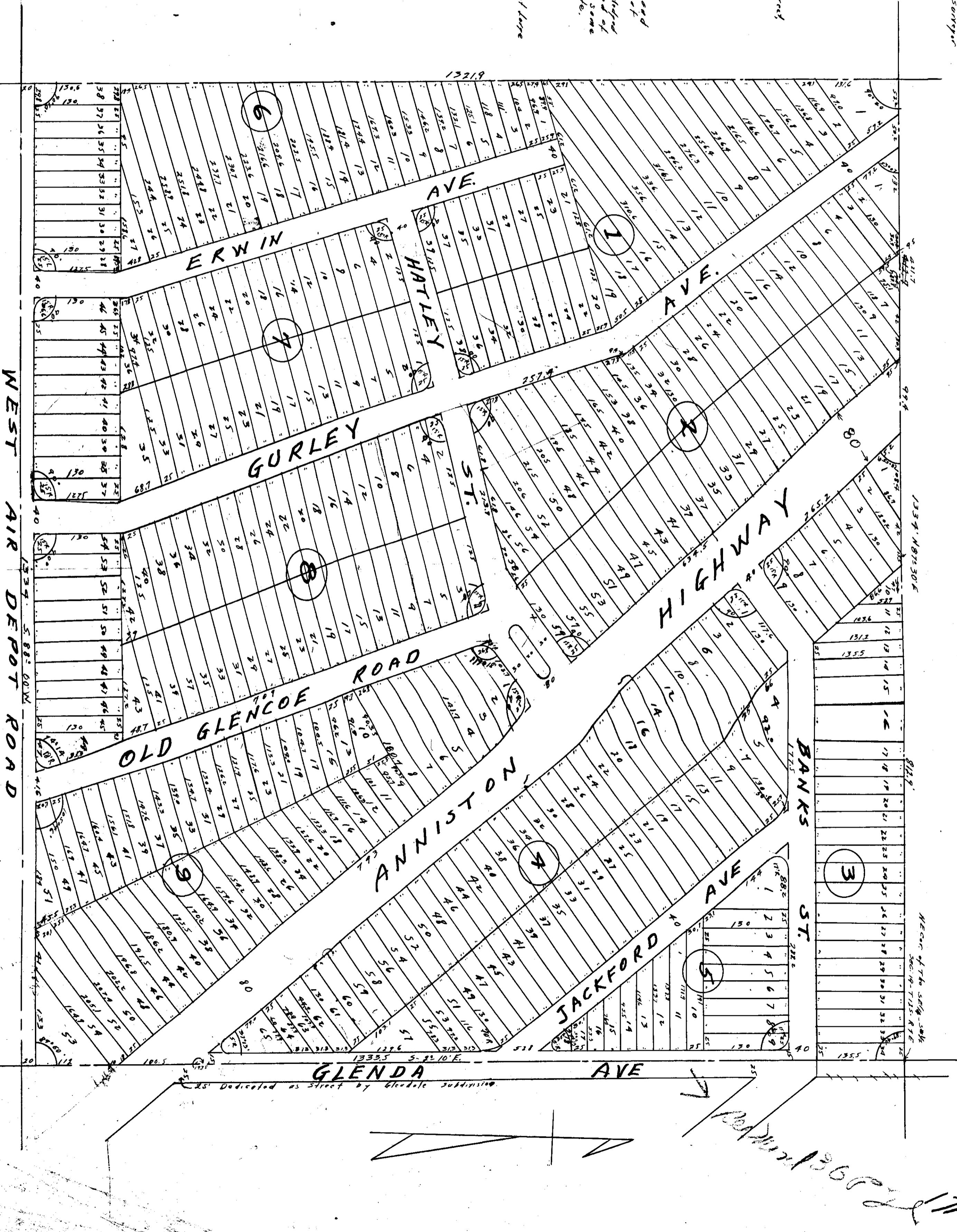
George F. Erwin
Notary Public, State of Alabama

SEAL

Approved - J. J. ...
Approved - ...
Approved - ...

Filed in office for record on ...
A. D., 1925, at ...
and duly recorded this ... day of ...

G. L. Hunt
Judge of Probate



17
17