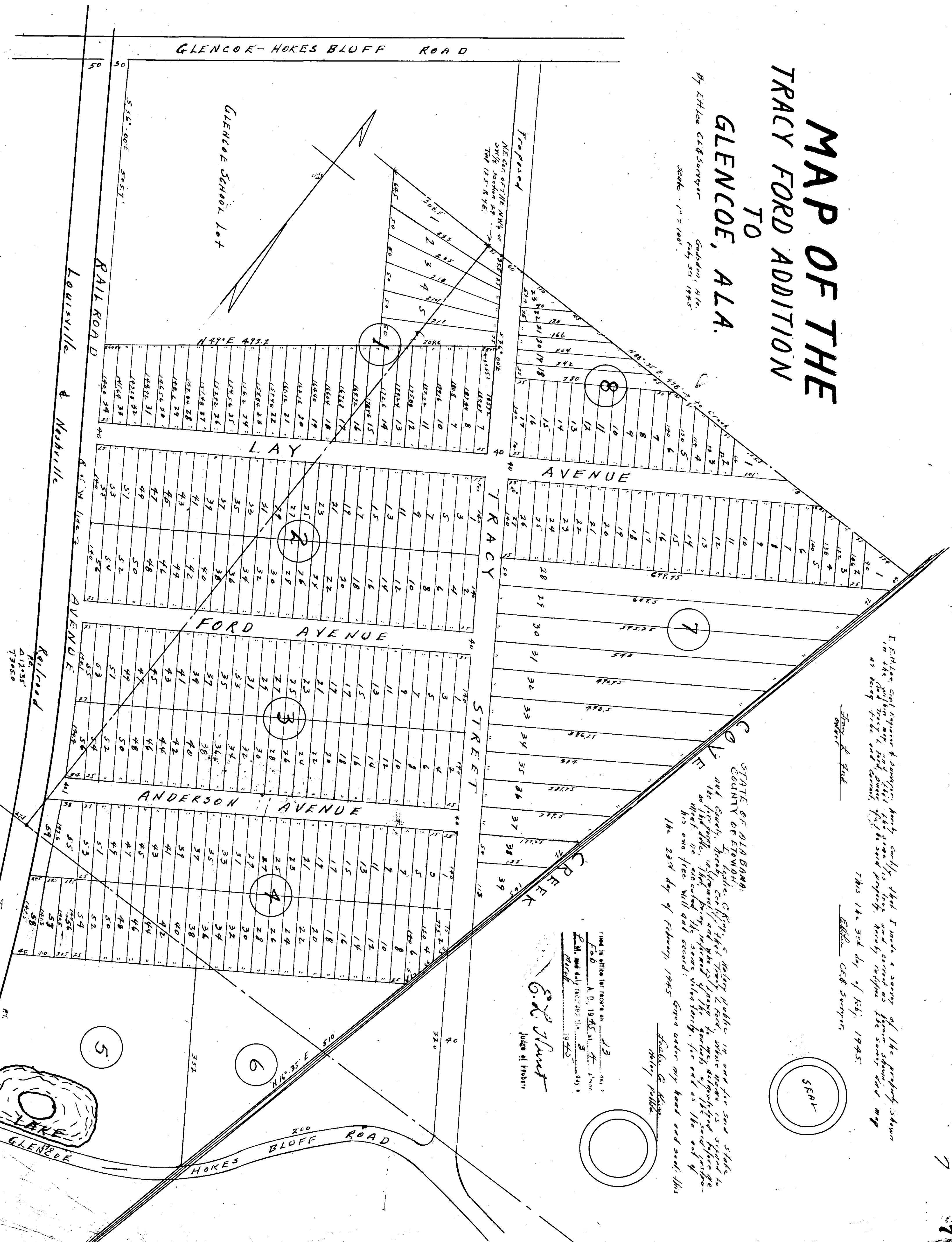


# MAP OF THE TRACY FORD ADDITION TO GLENCOE, ALA.

By Ethel C. B. Swanson, Graduate, A.P.L.  
Scale: 1" = 100'



Ethel C. B. Swanson, Graduate, A.P.L., has prepared this map in accordance with the provisions of the Act of the Legislature of the State of Alabama, approved March 10, 1905, and the Act of the Legislature of the State of Alabama, approved March 10, 1905, and the Act of the Legislature of the State of Alabama, approved March 10, 1905.

STATE OF ALABAMA  
COUNTY OF ETOWAH:  
I, Ethel C. B. Swanson, being duly sworn, depose and say that I am the author of the above and true copy of the same, and that the same were prepared by me in accordance with the provisions of the Act of the Legislature of the State of Alabama, approved March 10, 1905, and the Act of the Legislature of the State of Alabama, approved March 10, 1905, and the Act of the Legislature of the State of Alabama, approved March 10, 1905.

Witness my hand and seal of office this 13th day of February, 1945.  
Ethel C. B. Swanson  
Judge of Probate

SEAL