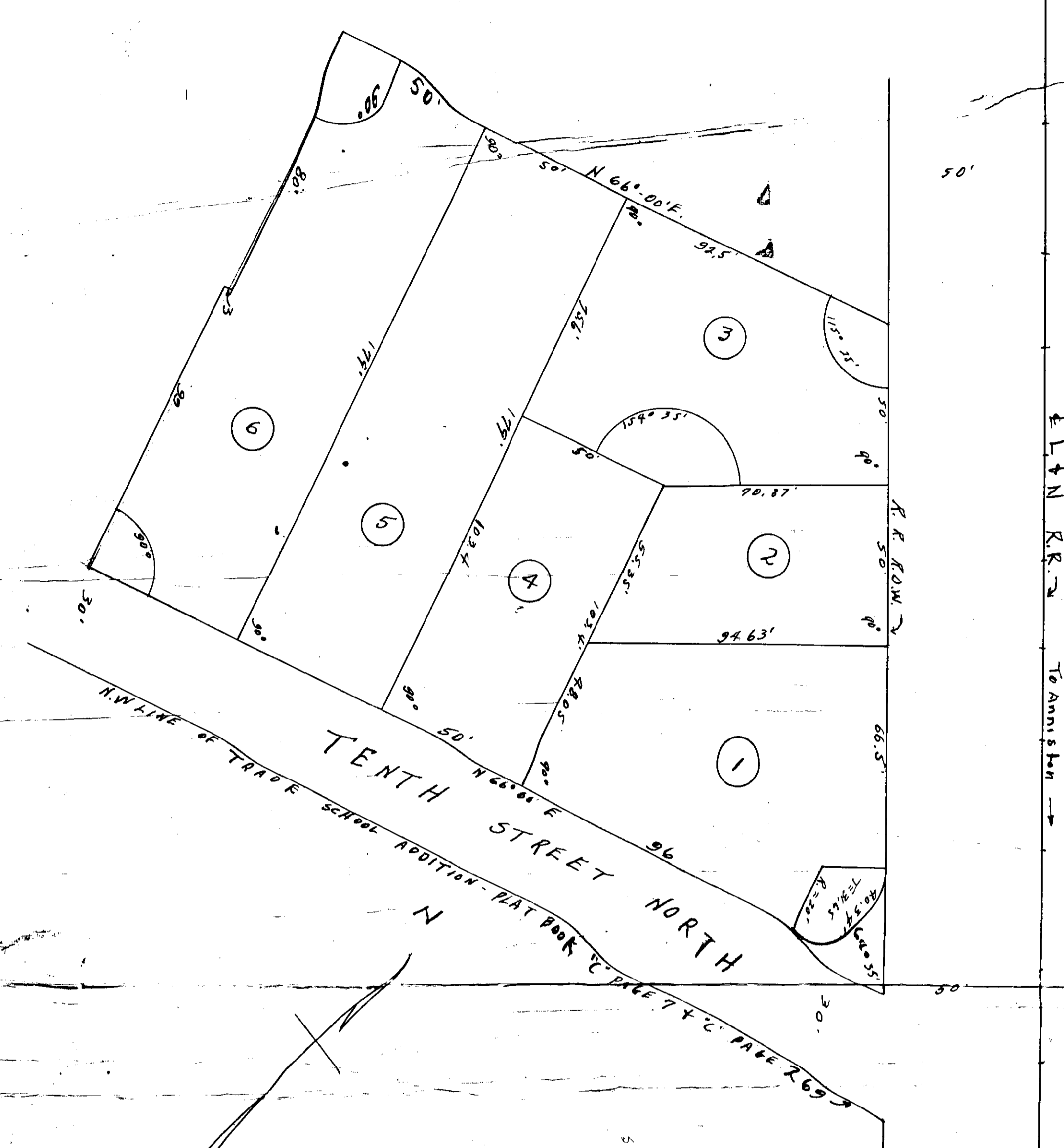


MAP OF GADSDEN BAPTIST TEMPLE ADDITION
 GADSDEN ETOWAH COUNTY ALABAMA
 LYING AND BEING IN THE NW 1/4 OF THE SW 1/4, SECTION 11 T. 12 S. R. 6 E.



Small Summers, owner of the lands embraced in the foregoing plat, is hereby selling and conveying the same to the undersigned on the 12th day of January 1905.

Small Summers
Grant

Small Summers, of Etowah County, Alabama, do hereby certify that the foregoing plat is a true and correct copy of the original plat on file in my office, and that the same is true and correct.

This 12th day of January 1905.

Small Summers
 Notary Public

Small Summers, of Etowah County, Alabama, do hereby certify that the foregoing plat is a true and correct copy of the original plat on file in my office, and that the same is true and correct.

This 12th day of January 1905.

Small Summers
 Notary Public

