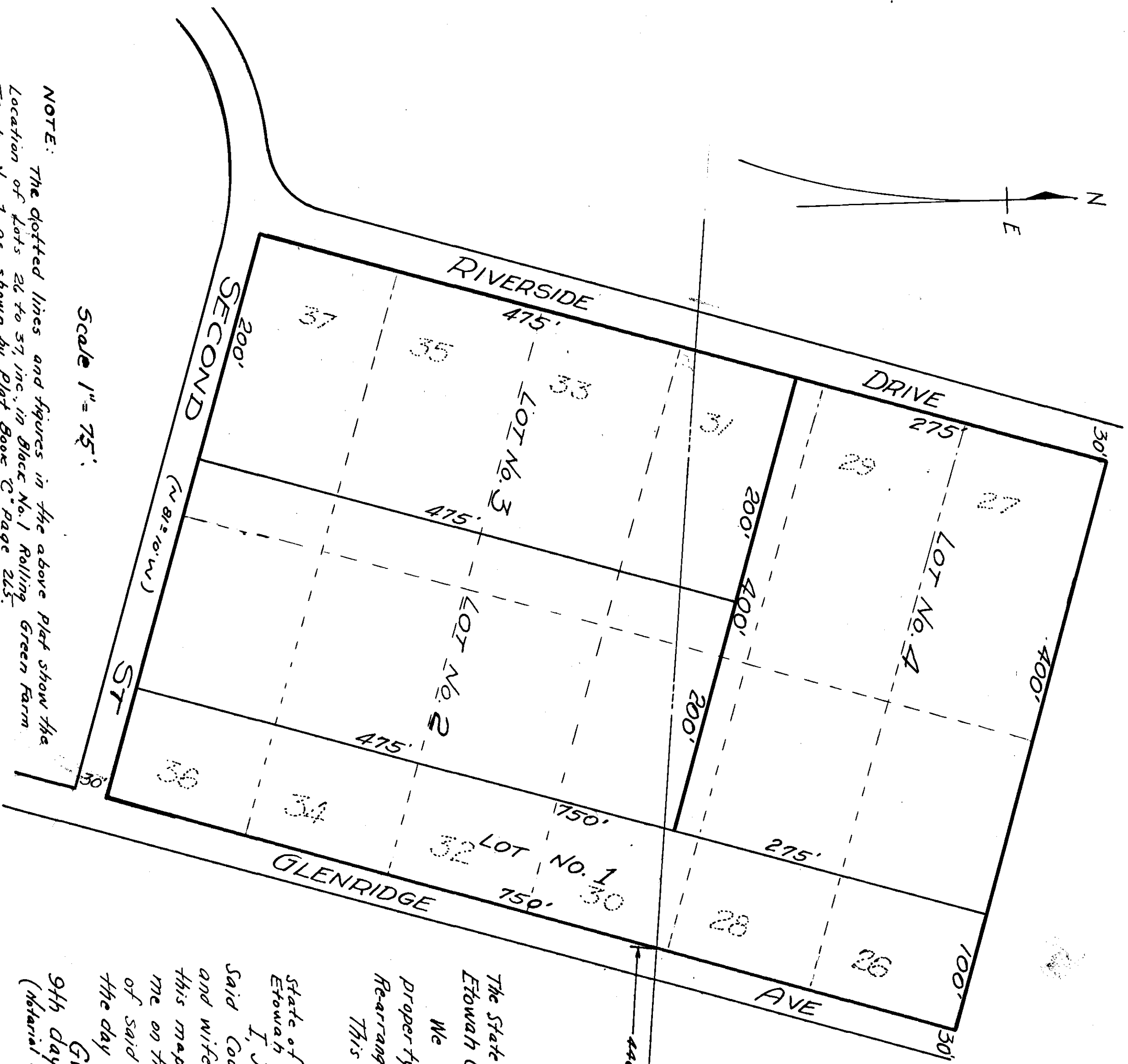


**MAD OF
THE VOSS RE-ARRANGEMENT OF LOTS NOS. 26 TO
37 INC., IN BLOCK NO. 1 IN ROLLING GREEN FARM
TRACTS NO. 1 AS RECORDED IN PLAT BOOK 'C' PAGE 265
IN THE PROBATE OFFICE, ETOWAH COUNTY, ALA.**

File
C
P
H
1/21/43



Scale 1" = 75'

NOTE: The dotted lines and figures in the above Plat show the Location of Lots 26 to 37 inc. in Block No. 1 Rolling Green Farm Tracts No. 1, as shown by Plat Book 'C' Page 265.

The State of Alabama
Etowah County

I, James Sivey, hereby certify that this Map shows a correct Re-arrangement of Lots Nos. 26 to 37, inc. Block No. 1 of Rolling Green Farm Tracts No. 1 as recorded in Book of Town Plats 'C' Page 265 in said Probate Office. This the 5th day of August, 1943.
James Sivey,
Draftsman.

SE. COR. SEC. 15,
TR. 12S, R. 6 E
NE. COR. SEC. 22,
TR. 12S, R. 6 E

FILED FOR RECORD IN
PLAT BOOK 'C' PAGE 265
AUGUST 11 1943
JAMES SIVEY
DRAFTSMAN

The State of Alabama
Etowah County

We CG Voss and wife, Ruby Alice Voss, owners of property shown hereon, hereby ratify and adopt this Re-arrangement as being true and correct. This the 9th day of August, 1943.
C. G. Voss (L.S.)
Ruby Alice Voss (L.S.)

I, Josephine P. Alexander, a Notary Public in and for said County and State, hereby certify that C.G. Voss and wife, Ruby Alice Voss, whose names are signed to this map, and who are known to me, acknowledged before me on this date that, being informed of the contents of said map, they executed the same voluntarily on the day the same bears date.
Given under my hand and Notarial Seal this 9th day of August, 1943.
Josephine P. Alexander,
Notary Public.