

State of Alabama
Etowah County

I, E. H. Lee, a Civil Engineer and Surveyor, hereby certify that I made a Survey of the lands contained in the within map and subdivided the same into lots as shown and that the Survey as well as the Subdivision of the same is true and correct as herein shown.
This the 5th day of August, 1939.

E. H. Lee,
Civil Engineer & Surveyor

State of Alabama
Etowah County

I, R. H. Forman, Vice President of the Attalla Realty Company, incorporated with full authority invested in me as such officer and company, owners of the lands contained in the within map or plat, hereby certify, explain and adopt the within Survey and Plat made by E. H. Lee, a Registered Engineer and Surveyor, as being true and correct.
This the 20th day of August, 1939.

R. H. Forman,
Vice President of The Attalla Realty Co.

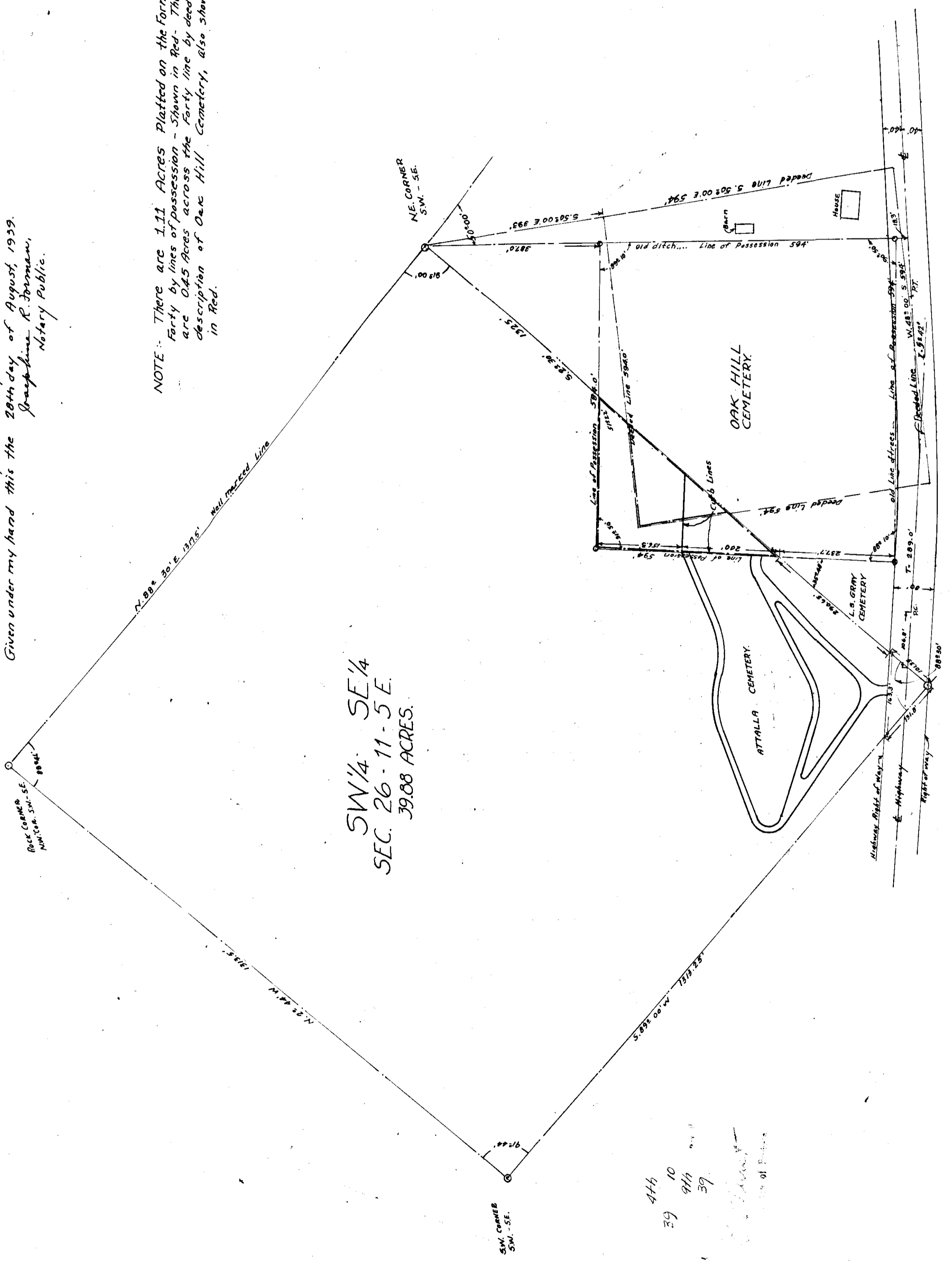
State of Alabama
Etowah County

I, Josephine R. Forman, a Notary Public in and for said County and State do hereby certify that R. H. Forman, whose name as owner is signed to the within map or plat, and who is known to me, acknowledged before me on this date, that being informed of the contents of the conveyance he, as such owner, executed the same voluntarily on the day the same being date.

Given under my hand this the 20th day of August, 1939.
Josephine R. Forman,
Notary Public.

NOTE: There are 111 Acres Platted on the Forman Party by lines of possession - Shown in Red. There are 0.45 Acres across the party line by deeded description of Oak Hill Cemetery, also shown in Red.

SW 1/4 SE 1/4
SEC. 26 - 11 - 5 E.
39.88 ACRES.



Dec 1 4th 39
A 39 9th 39
Dec 1 39