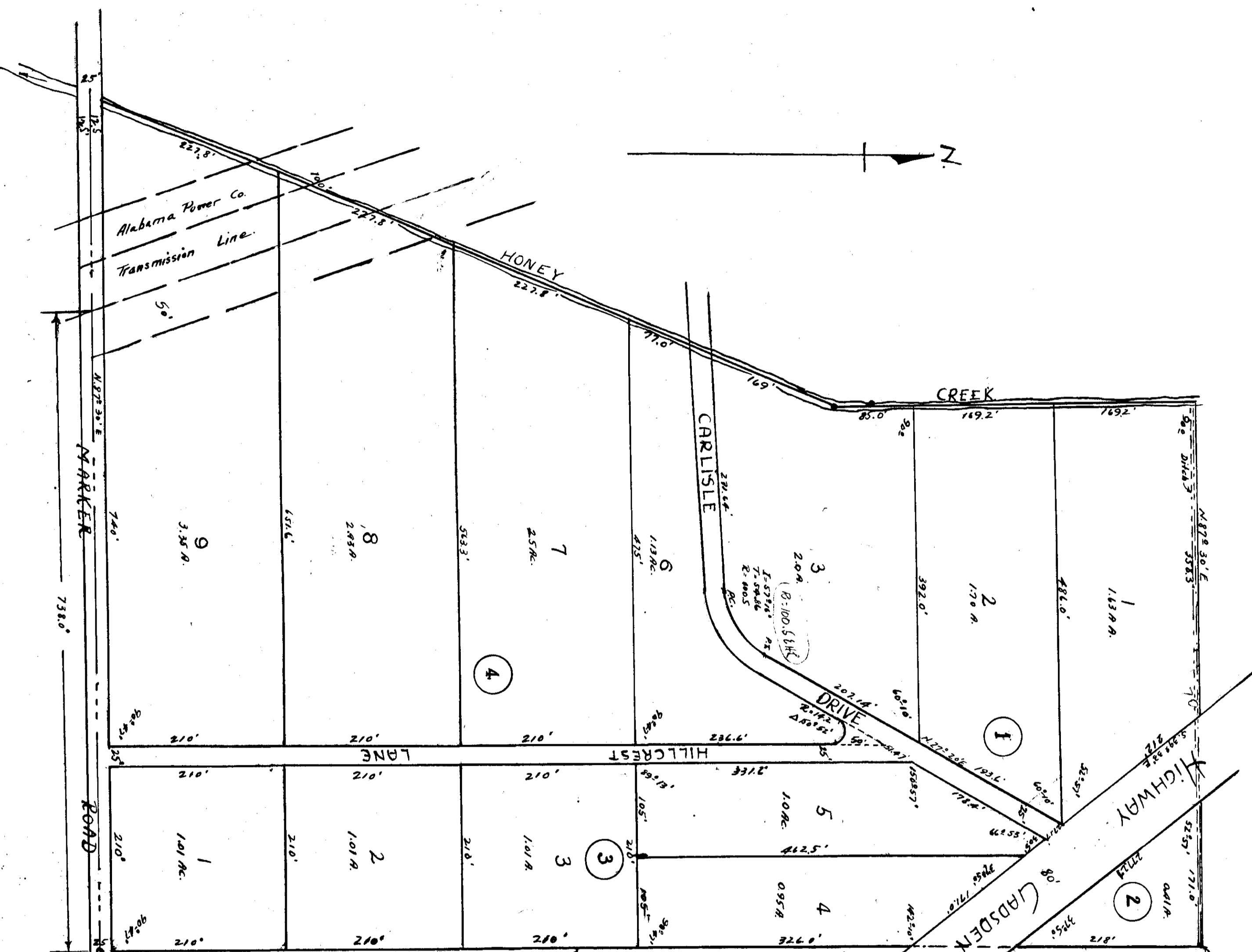


# McCORD'S SUBDIVISION

PART OF THE SE<sup>4</sup> OF NE<sup>4</sup> SECTION 24, T<sup>12</sup>R<sup>12</sup>S RANGE 6 EAST  
ETOWAH COUNTY, ALA.

By E. H. Lee, C.E.  
Gadsden, Alabama,  
11-30-35.



State of Alabama }  
County of Etowah }

I, E. H. Lee, a Civil Engineer, who subdivided the property contained in the within may hereby certify that the same subdivision is true and correct as herein represented, and Tom Carlisle, Mary Dale McCord, Ray D. McCord and Beulah Nell McCord owners of the said property so subdivided, hereby ratify, confirm and adopt the same as being correct.

Given Carlisle  
R. E. Carlisle  
Mary Dale McCord  
Ray D. McCord  
Beulah Nell McCord

E. H. Lee,  
Civil Engineer

State of Alabama }  
County of Etowah }

I, Ida Lee Griffin, a widow, public in and for said State and County, hereby certify that E. H. Lee, as Civil Engineer and Tom Carlisle and wife, R. E. Carlisle, Mary Dale McCord, Ray D. McCord and Beulah Nell McCord, as owners, personally appeared before me on this date and who are known to me, and acknowledged that being indignant of the contents of the within instrument they executed the same voluntarily, free and as the act of their own free will and accord on the day the same bears date.

This the 7th day of December, 1935.  
Ida Lee Griffin,  
Widow Public.

Scale 1" = 100'

Filed in office for record on \_\_\_\_\_ 1935  
at \_\_\_\_\_ Ala. by \_\_\_\_\_  
C. H. Lee, C.E.  
11-30-35

*C. H. Lee*

SE CORNER OF NE<sup>4</sup> OF SECTION 24, T<sup>12</sup>R<sup>12</sup>S, R. 6E.