

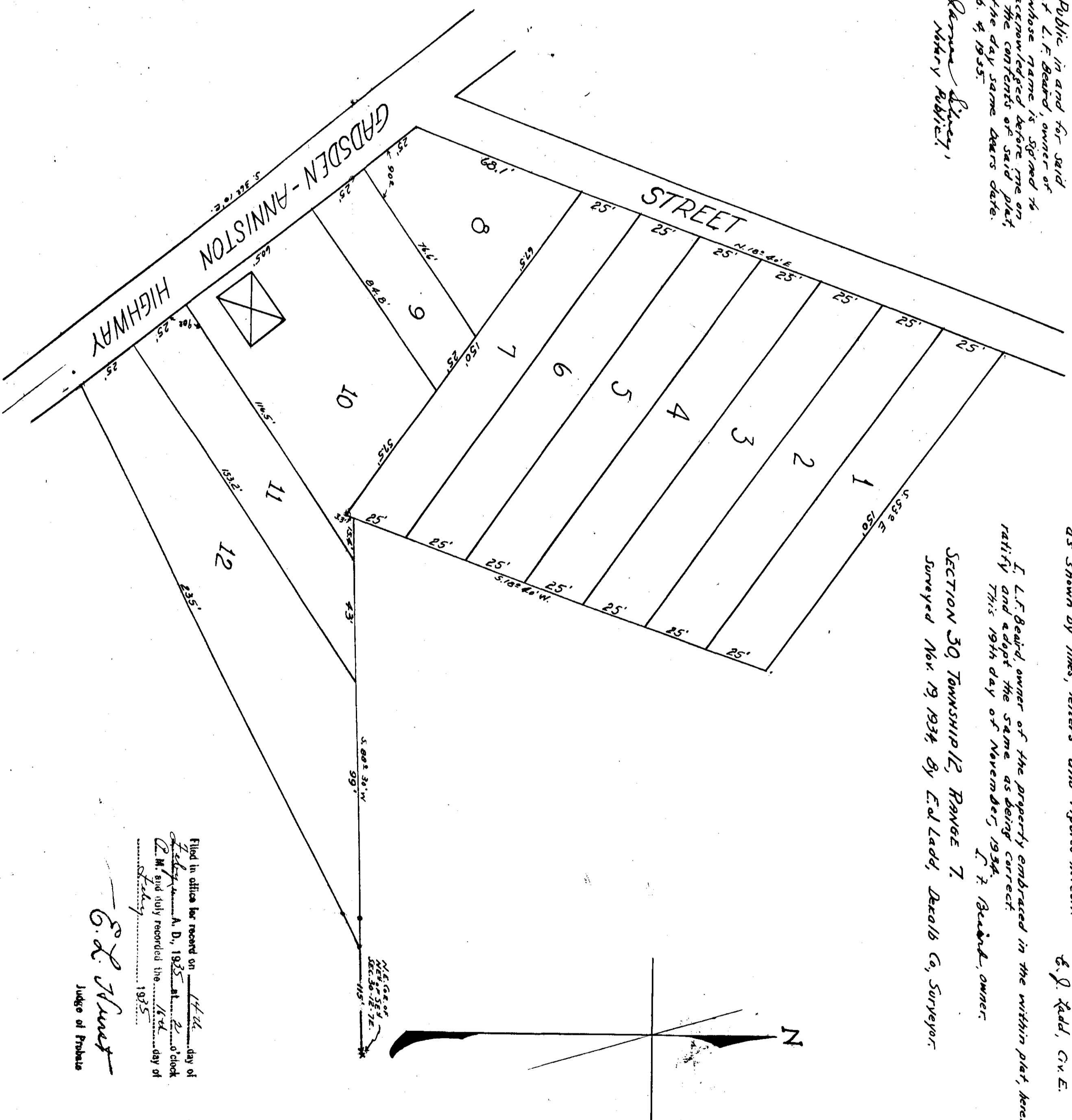
MAP OF L.F. BEARD SUBDIVISION.

Said Subdivision embracing Lots Nos. 17 to 24 Inc. Bile. No. 1 of the S.S. Spence Apple Yard Subdivision is shown by Book of Town Plats 29 Page 374 in the office of Judge of Probate, and a portion of the NE 1/4 of the SE 1/4 Sec. 30 Twp. 12 S. R. 7 E. Etowah County Ala.

I hereby certify that this is a correct plat of a survey made by me, as shown by lines, letters and figures herein. E. J. Kadd, C. E.

I, L.F. Beard, owner of the property embraced in the within plat, hereby ratify and adopt the same as being correct. This 19th day of November, 1934. L. F. Beard, owner.

SECTION 30, TOWNSHIP 12, RANGE 7.
Surveyed Nov. 19 1934 by E. J. Kadd, DeKalb Co. Surveyor.



State of Alabama }
Etowah County }

I, Remus Shelby, County Clerk, Etowah County, Alabama, do hereby certify that the within plat is a correct and true copy of the original plat, as the same appears from the records of said county, and that the same was duly recorded in the office of said clerk on the 19th day of November, 1934, and that the contents of said plat are correct and true as the same appear from the records of said clerk. Given under my hand, this 26th day of November, 1934.

Remus Shelby,
County Clerk,

Filed in office for record on 11/26 day of November, A. D. 1934 at 2 o'clock
P. M. and duly recorded this 16th day of November, 1934.

E. J. Kadd
Judge of Probate