

# GADDSEN REALTY COMPANY SUBDIVISION

PLAT OF SURVEY MADE FOR TENN-ALA AUCTION CO. NOVEMBER 17, 1934. E. J. LADD, DEKALB COUNTY SUPERVISOR. Scale 1" = 300'

This plat embraces within its boundary a rearrangement of Gadsden Realty Company's Crescent Heights new subdivision as recorded in Book of Town Plats "B" Page 380.

I hereby certify that this is a correct plat of a survey made by me as shown by lines, letters and figures hereon.

E. J. Ladd, CIV. E.

State of Alabama

County of DeKalb

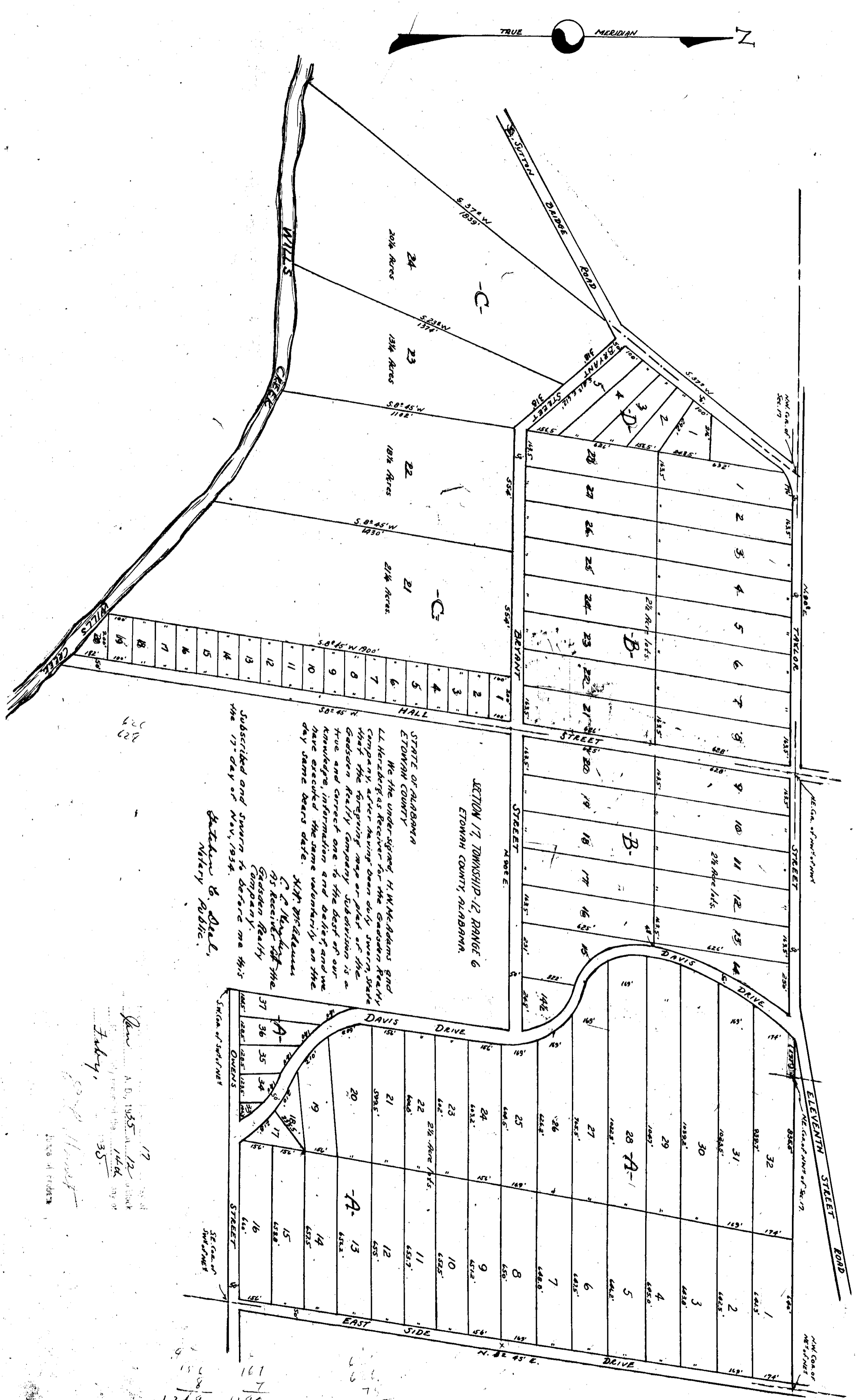
I hereby certify that this is a correct plat of a survey made by me as shown by lines, letters and figures hereon.

E. J. Ladd, CIV. E.

STATE OF ALABAMA

DEKALB COUNTY

I, J. B. Brown, a Justice of the Peace in and for said County, do hereby certify that Edward A. Ladd was personally known to me, and was personally surveyed and platted on this day that being informed of the contents of said subdivision and having personally surveyed and platted same, one of which was under his supervision, that he signed said certificate and executed same voluntarily on the date the same bears date. Given under my hand, this the 30th day of Nov., 1934. J. B. Brown, Justice of the Peace.



SECTION 17, TOWNSHIP 12, RANGE 6  
ETOWAH COUNTY, ALABAMA

STATE OF ALABAMA

We the undersigned, H. W. Meddens and L. L. Herberichs, for and in behalf of the Gadsden Realty Company, do hereby certify that the foregoing map or plat of the Gadsden Realty Company Subdivision is a true and correct one to the best of our knowledge, information and belief, and we have executed the same voluntarily on the day same bears date. H. W. Meddens, L. L. Herberichs

Subscribed and sworn to before me this the 17th day of Nov., 1934.

E. J. Ladd, CIV. E.

Recd. A. B. 1935, 12

July, 35

161  
151  
8  
1288  
1211  
124  
5  
2642