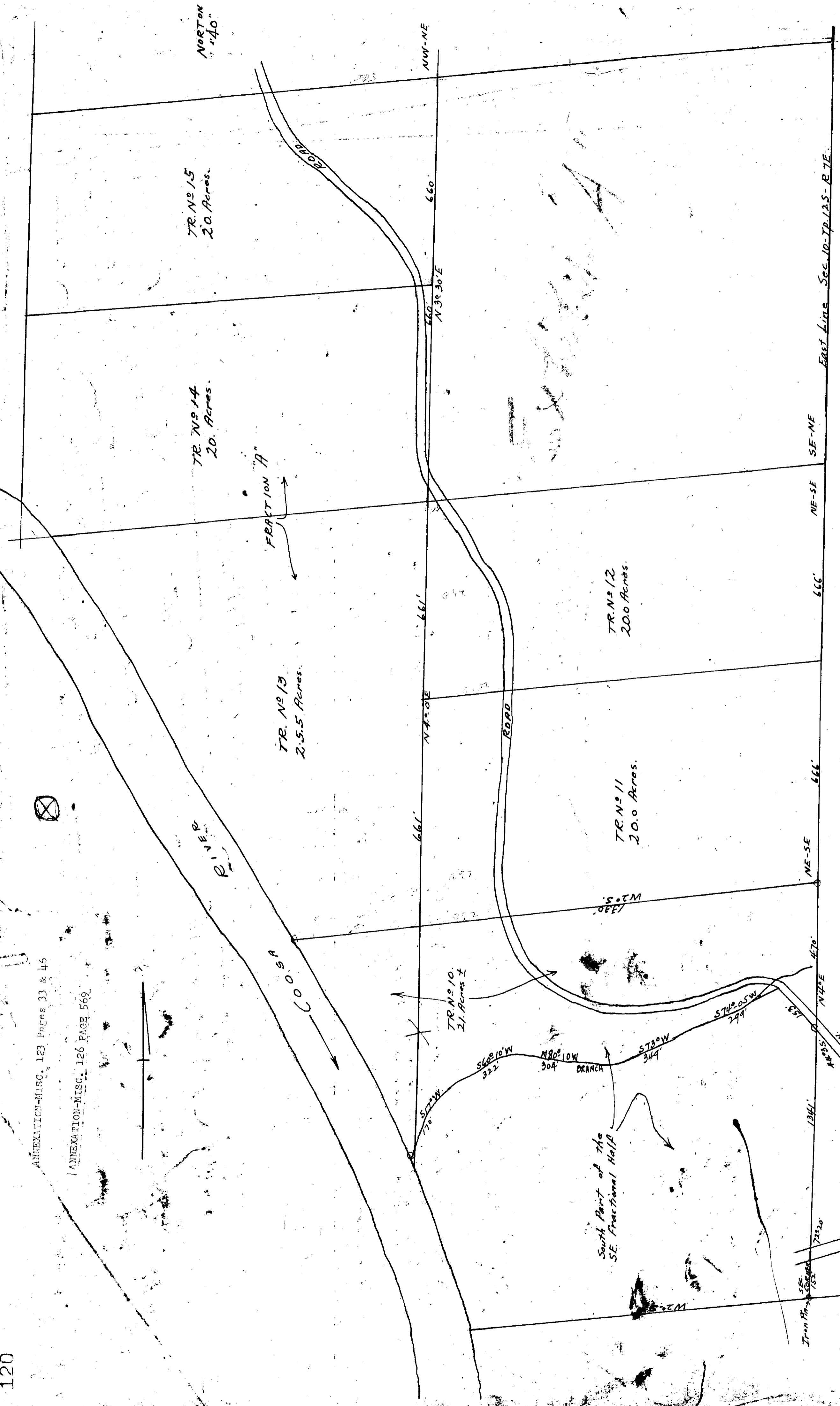


ANNEXATION-MISC. 123 Pages 33 & 45

ANNEXATION-MISC. 126 PAGE 569



MAP OF PART OF J.T. MORRIS FARM
 LOCATED ON THE EAST SIDE OF
 THE COOSA RIVER IN SEC. 10, TR.
 12 S, RANGE 7 E, ETOWAH COUNTY, ALA.
 GADSDEN, ALA. Oct 24, 1929
 F.F. Barry, C.E.

Scale: 1"=200'

The State of Alabama, Etowah County,
 I hereby certify that the within instrument
 was filed in this office for record, that
 the same is correct and true to the best of
 my knowledge and belief, and that the same
 was duly acknowledged before me by the
 parties thereto on the 24th day of October,
 1929.
 F.F. Barry, C.E.
 Notary Public for Alabama

See Pages 122-3