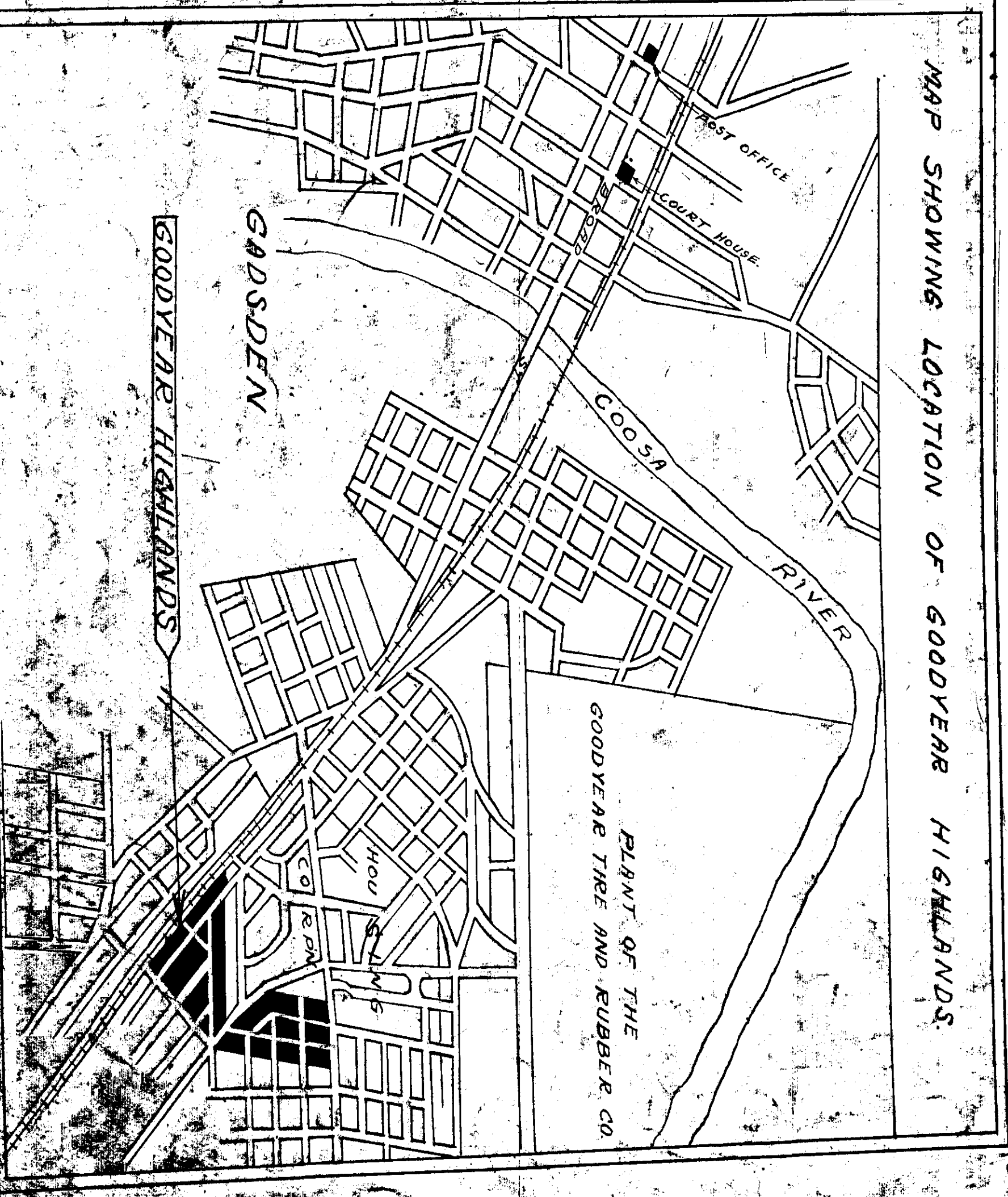
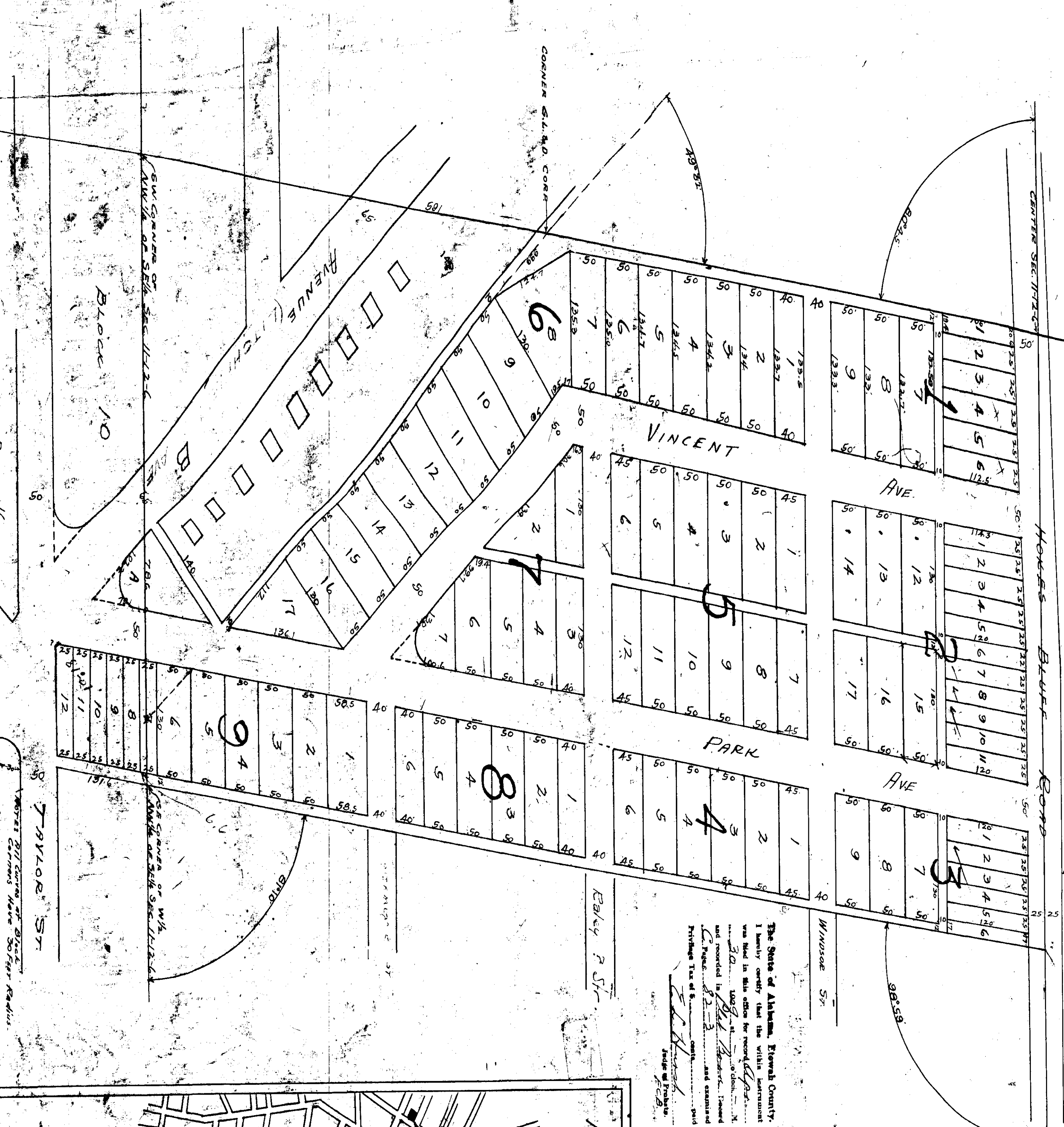


- GADSDEN, ALABAMA.



The State of Alabama, Etwell County, hereby certifies that the within instrument was filed in this office for record on this 27th day of April, 1929, and recorded in Book 10, Page 10, and certified by the Notary Public in and for said State and County, Etwell County, Alabama, this 27th day of April, 1929.

Notary Public

STATE OF ALABAMA:
 COUNTY OF ETWELL:
 I, Philip B. Hill, a Civil Engineer and Surveyor, hereby certify that the annexed plat or map is a true and correct plat of streets, quads, lots, blocks, and angles as surveyed and platted by me, and shows the relation of the land platted to the Government Survey.

Philip B. Hill
 Civil Engineer

STATE OF ALABAMA:
 COUNTY OF JESSAMIN:
 We, the Check-Paid Land Co. owners of the property shown on the annexed map, hereby accept and adopt said map as true and correct.

Check-Paid Land Co.
 By *Wm. C. Williams*, Sec.

310
 100
 54