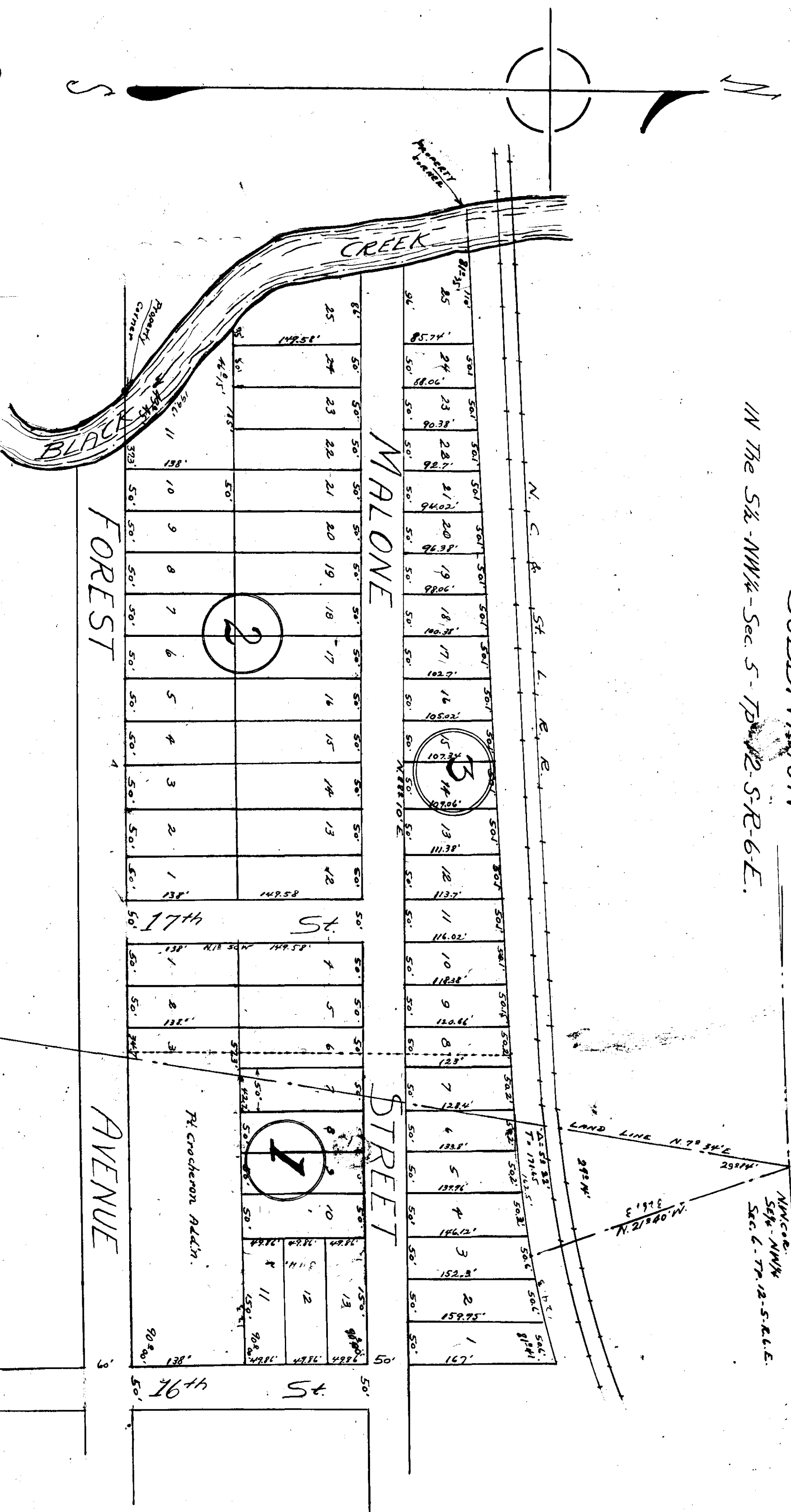


MAP  
OF  
ETOWAH TRUST & SAVINGS BANK  
FOREST AVENUE  
SUBDIVISION  
IN THE S½ NW¼ - Sec. 5 - T2N R2E S-R-6-E.



See  
Misc  
Book  
154  
page - 261

See  
Misc  
Book - T  
page - 317

The undersigned Lee Engineering Co. who made this map and surveyed the property contained therein hereby certify that the map is correct, that it correctly shows the subdivisions into which the property is divided, it also shows the bearings of the boundaries of the property, as well as each street and avenue and their names and widths, it also shows each lot and block and their length, width and number. It also shows the relation of the land so subdivided, to the original Government Survey and the undersigned Etowah Trust & Savings Bank, by its newly revised and adopted the same as being correct. Given under our hand this 1st day of May, 1928.

Witness:  
Etowah Trust & Savings Bank, Lee Engineering Co.  
By M.B. Whitcomb, By T.G. Lee, Pres. Secy.

The State of Alabama,  
Etowah County.  
I, Mrs. Merritt Hampton, Mayor, Public 17 and 5th State  
and Lee Engineering Co., City of Etowah, County of Etowah,  
do hereby certify that the map of the Etowah Trust & Savings  
Bank, and the subdivision of the land therein, as shown on  
the map, is correct, and that the same is in accordance with  
the original Government Survey, and the original plat of  
the same, and that the same is in accordance with the  
original order of the Court, and that the same is in  
accordance with the original order of the Court, and that  
the same is in accordance with the original order of the  
Court, and that the same is in accordance with the original  
order of the Court, and that the same is in accordance  
with the original order of the Court, and that the same  
is in accordance with the original order of the Court,  
this 1st day of May, 1928.  
Mrs. Merritt Hampton,  
Mayor, Notary Public.

The State of Alabama, Etowah County.  
I hereby certify that the within is  
correct and true to the original  
May 1928 1/8  
and examined  
M.B. Whitcomb  
Notary Public