

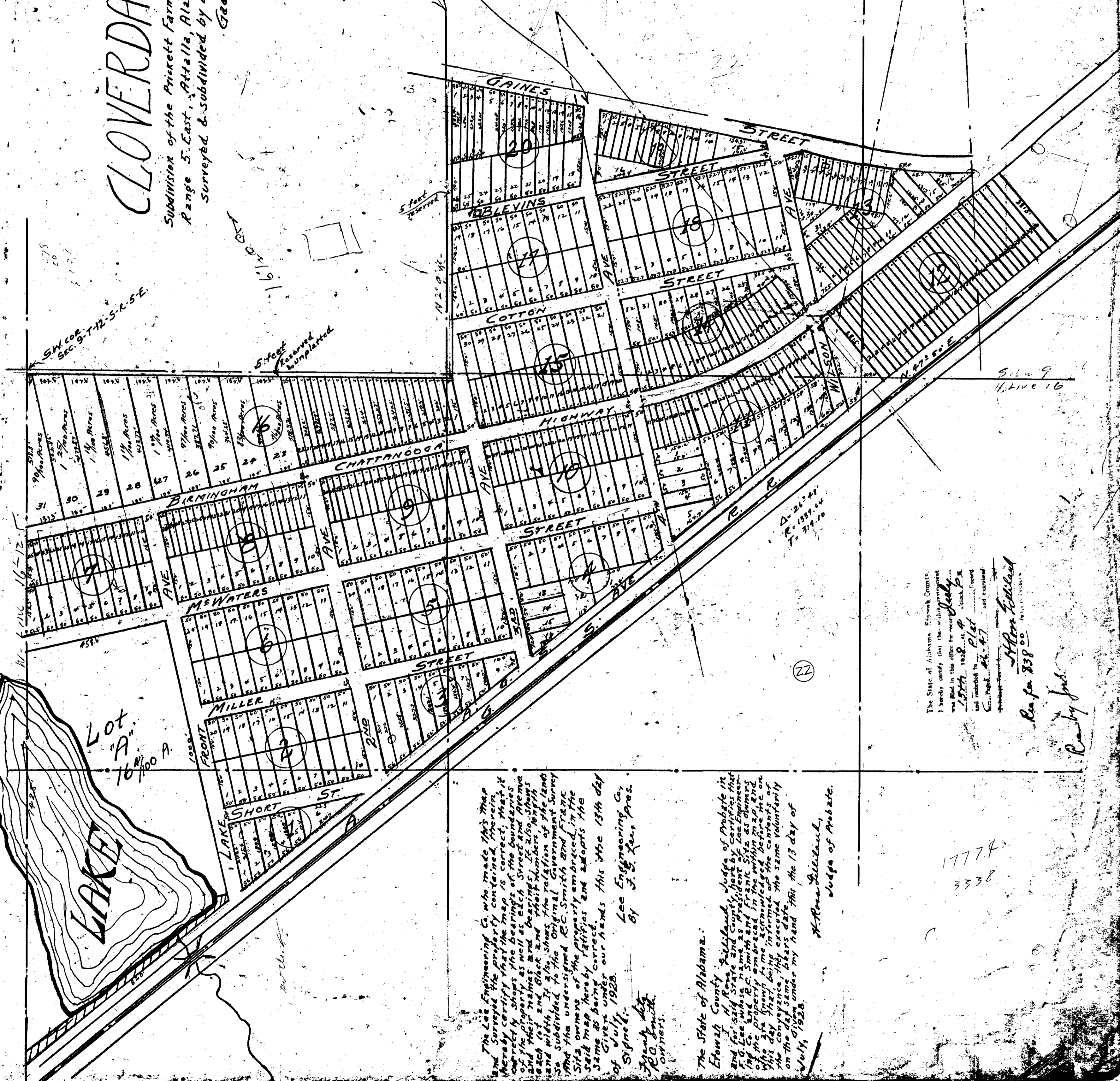
CLOVERDALE

Subdivision of the Arnett Farm in Sections 9 & 16-T-12-S-5-
 Range 5 East, Attalla, Ala.
 Surveyed & subdivided by Lee Engineering Co.,
 Gadsden, Ala. July - 1928.

SW 1/4 SEC 9-T12-S-R-5-E

See next page for
 balance of this plat

2815
 2075
 17.0
 13



The Lee Engineering Co. who made this map
 and certify that the map is correct, that it
 correctly shows the bearings of the boundaries
 of the property as well as each street and avenue
 and their widths and bearings, that all
 lots in this plat show the relation of the land
 and are subdivided to the original Government Survey
 and the undersigned E.C. Smith and Frank
 S. Lee owners of the property embraced in the
 said map hereby ratify and adopt the
 same as being correct.
 Given under our hands this 13th day
 of July, 1928.
 Lee Engineering Co.
 By J. E. Lee Pres.
 F. C. Smith
 Owners.

The State of Alabama.
 Etowah County, Gadsden, Judge of Probate in
 and for said State and County, do hereby certify that
 the Lee Engineering Co. is a duly organized corporation
 of the State of Alabama, and that the undersigned
 is a duly qualified and acting Judge of Probate in
 and for said State and County, and that the
 said map was duly recorded in the office of the
 Judge of Probate in and for said State and County
 on the 13th day of July, 1928.
 A. Ross Gilchrist,
 Judge of Probate.

The State of Alabama, Etowah County.
 I hereby certify that the subdivision
 was filed in this office for record on
 July 13, 1928, at 4 o'clock P.M.
 and recorded in Plat Book 100
 Page 47.
 A. Ross Gilchrist
 Clerk for 1928

C. J. Ford

17774
 3338