

MAP OF MEADOWHILL

SUBDIVISION IN SEC. 3-T12-S-R-6-E-GADSDEN, ALA.

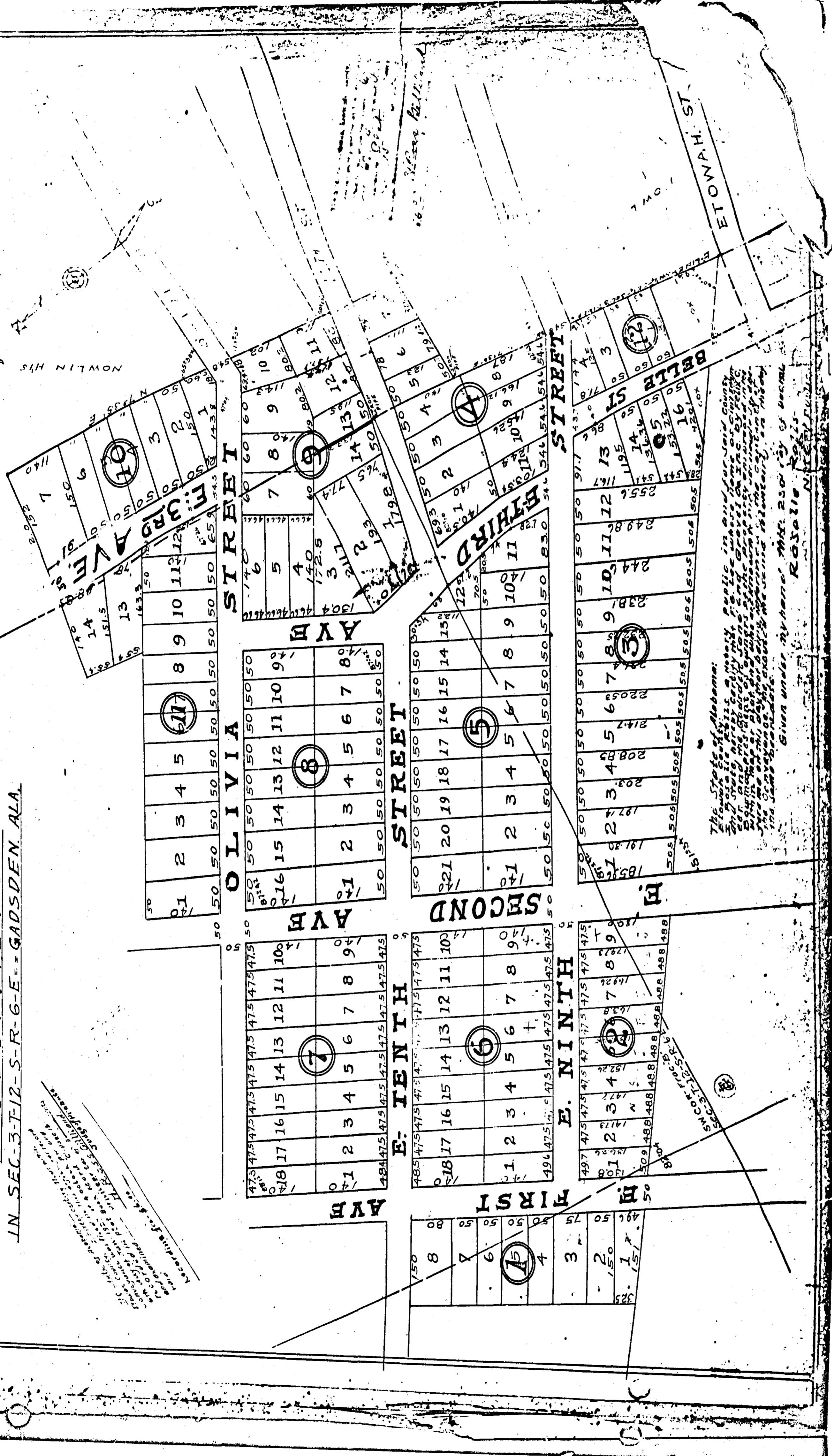
I. F. Lee, a civil engineer who made the map and survey and who is duly qualified to make the same, hereby certifies that the map is correct; that it correctly shows the boundaries of the property as well as each street and divide together with each lot and block and their numbers, lengths and widths; that the same show the location of the lot, block and street in the original Government Survey and the same as shown on the same and correct.

Given under our hand this 12th day of Dec. 1912.

I. F. Lee, Civil Engineer

God's man signed in the presence of

By J. C. HARRIS, PRESIDENT



The State of Alabama: I, J. C. Harris, Mayor of the City of Gadsden, do hereby certify that the above map is a true and correct copy of the original map on file in the office of the Mayor of the City of Gadsden, Alabama, and that the same is a true and correct copy of the original map on file in the office of the Mayor of the City of Gadsden, Alabama.

Given under my hand and the seal of the City of Gadsden, Alabama, this 12th day of Dec. 1912.

J. C. Harris, Mayor