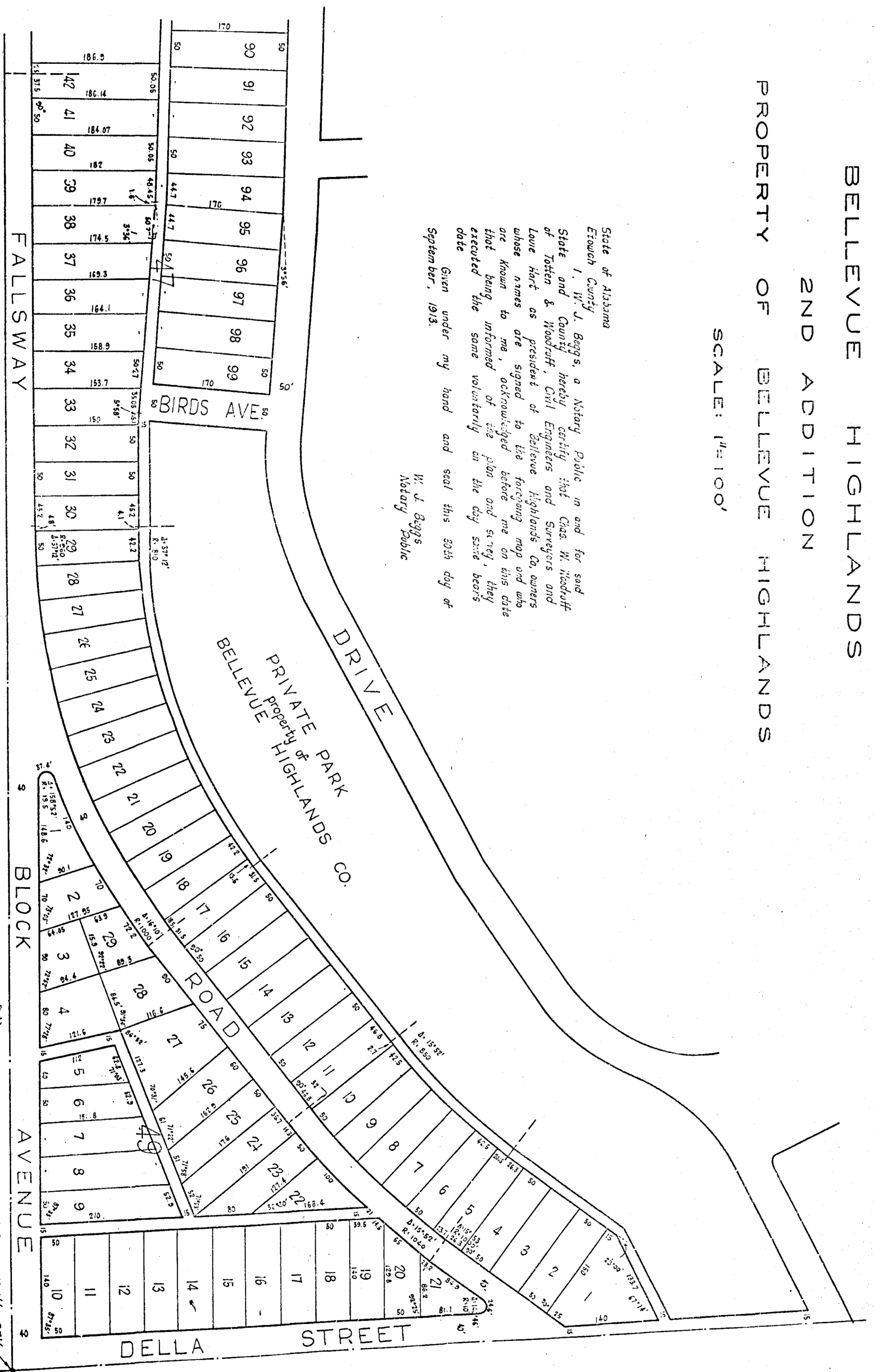


BELLEVUE HIGHLANDS  
2ND ADDITION  
PROPERTY OF BELLEVUE HIGHLANDS

SCALE: 1"=100'



State of Alabama  
Etowah County  
I, W. J. Biggs, a Notary Public, in and for said State and County, hereby certify that Chas. W. Hedcraft of Totten & Woodruff, Civil Engineers and Surveyors and Louie Hart as president of Bellevue Highlands Co. owners whose names are signed to the foregoing map and who are known to me, acknowledged before me on this date that being informed of the plan and survey, they executed the same voluntarily on the day and date hereunto set out.  
Given under my hand and seal this 30th day of September, 1913.  
W. J. Biggs  
Notary Public

Filed in office for record the 13 day of October, A.D. 1913 at 4 o'clock P.M. and duly recorded the 12 day of December, 1913.  
L. L. Herzberg  
Judge of Probate

SE Corner NW 1/4 SE 1/4  
Section 32 T 11 S R 6 E