

FOR REMAINDER OF MAP SEE PAGE 262

MAP OF  
BILLET YARD  
SOUTHERN IRON AND STEEL CO  
ALABAMA CITY, ALA

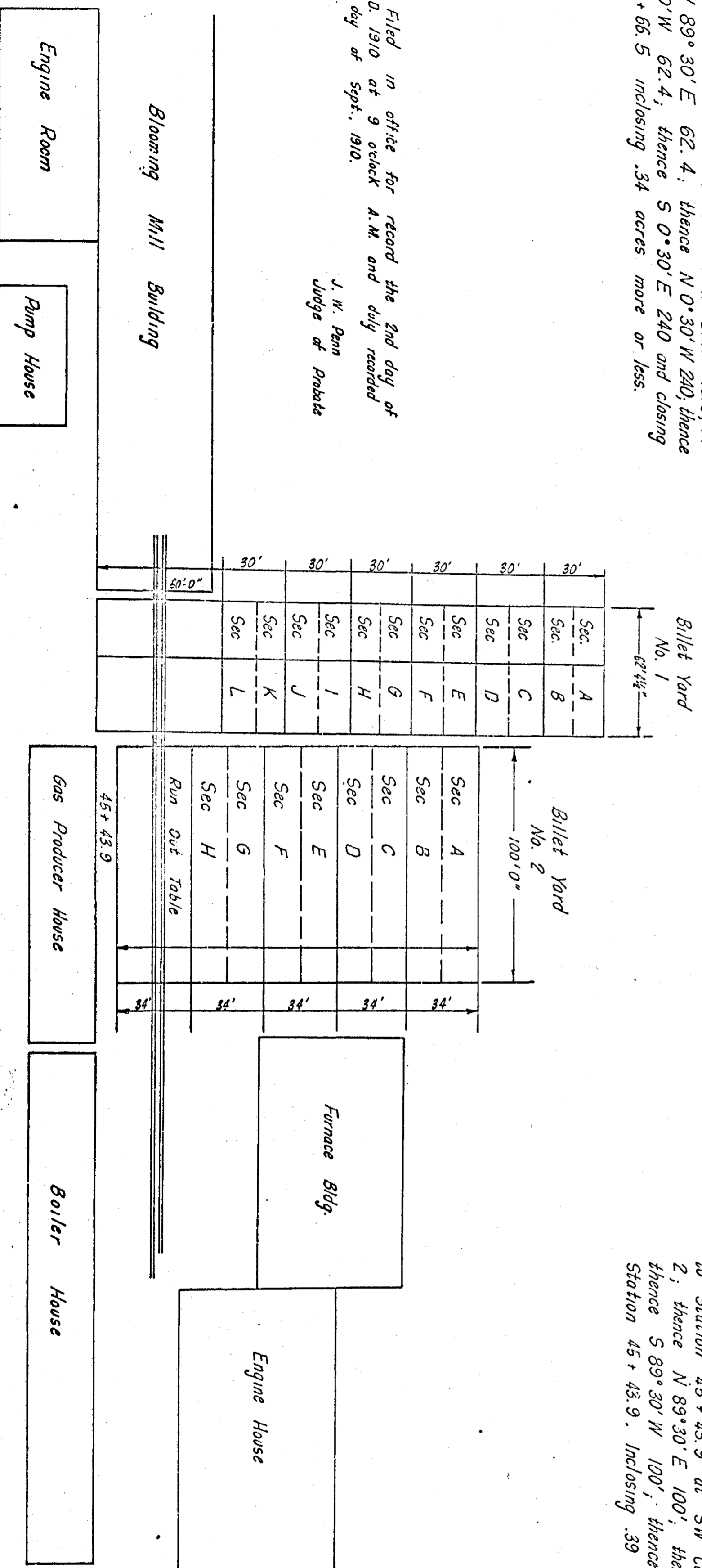
JUNE 11, 1910

SCALE: 1" = 40'

*Billet Yard No. 1:*  
Commencing SW Corner Section 6 T12 R6E,  
thence N 89° 30' E, 403.7; thence N 0° 30' W, 429.5;  
to Station 44 + 66.5 to SW Corner Billet Yard; thence  
N 89° 30' E, 62.4; thence N 0° 30' W, 240; thence  
S 89° 30' W, 62.4; thence S 0° 30' E, 240 and closing  
at 44 + 66.5 including .34 acres more or less.

J. W. Pann  
Judge of Probate

Filed in office for record the 2nd day of  
Sept. A.D. 1910 at 9 o'clock A.M. and duly recorded  
the 20 day of Sept., 1910.



*Billet Yard No. 2:*  
Commencing at SW Corner Section 6 T12 R6E,  
thence N 89° 30' E, 4102.4; thence N 0° 30' W, 441.5;  
to Station 45 + 43.9 at SW Corner Billet Yard No.  
2; thence N 89° 30' E, 100'; thence N 0° 30' W, 170';  
thence S 89° 30' W, 100'; thence S 0° 30' E, 140' to  
Station 45 + 43.9. Including .39 acres more or less.