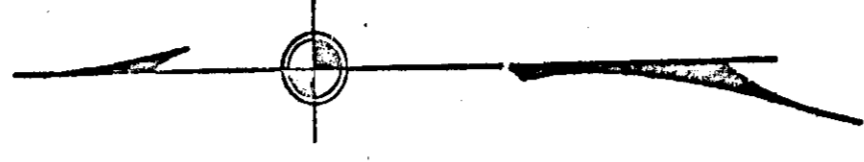


MAP OF  
**J. W. DUNAWAY'S PROPERTY**  
 SITUATED IN ETOWAH CO. ALA.

SCALE: 1" = 660'

SURVEYED BY  
**T. W. LISTER, C. E.**  
 JANUARY, 1910



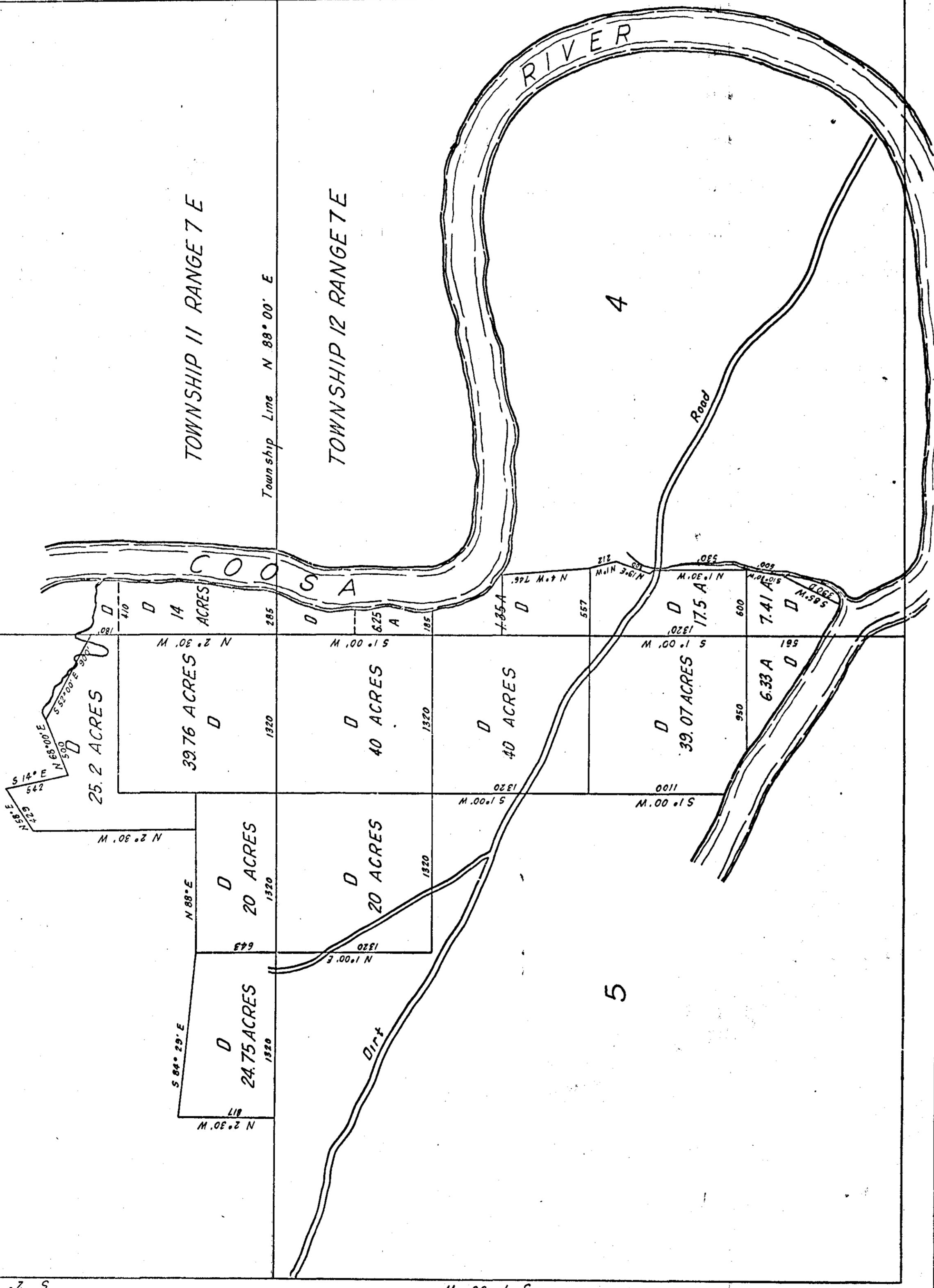
33

32

TOWNSHIP 11 RANGE 7 E

TOWNSHIP 12 RANGE 7 E

Township Line N 88° 00' E



S 2° 50' W

S 1° 00' W