

HILL & CANSLER ADDITION, BLOCK 9

We, Hill & Campbell, Civil Engineers, herby certify that this is a correct map of the lands herein described as surveyed by us this 18th day of October, 1909, lying in Block 9 of the Hill & Cansler Addition to Goddard, Etowah County, Alabama. There is nothing of record showing the dedication of 6.2' on the East end of Simpson Lot for Alley purposes.

Hill and Campbell, Engineers

We, W.L. Sibert and wife Mary C. Sibert, Emma L. Sibert, Charles S. Blair, Frances E. Sibert, O.W. Sibert and wife Emily W. Sibert owners of the lands and property herein described, herby adopt the within plat as being correct on this 19th day of October, 1909.

Wm. F. Sibert S.H. Sibert Emma L. Sibert O.W. Sibert  
 Mary C. Sibert S.H. Sibert Charles S. Blair Frances E. Sibert Emily W. Sibert

State of Alabama, Etowah County: Notary Public

I, Chas. F. Hill, a Notary Public in and for said State and County herby certify that W.L. Sibert, Mary C. Sibert, S.H. Sibert, Emma L. Sibert, Charles S. Blair, Frances E. Sibert, O.W. Sibert and Emily W. Sibert, whose names are signed to the foregoing declaration, and who are known to me, acknowledged before me on this day that being informed of the contents of the declaration, they executed the same voluntarily on the day same bears date.

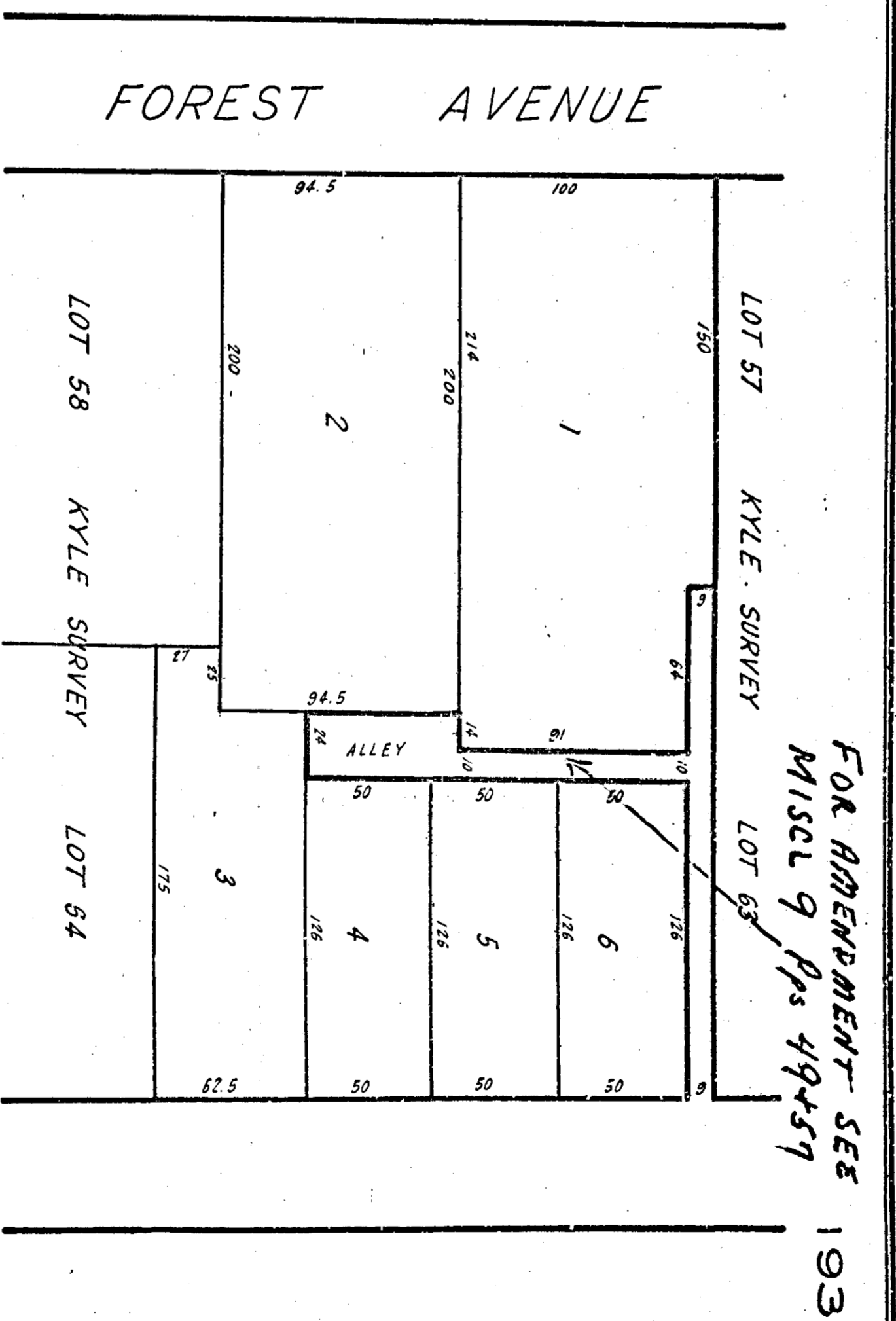
Given under my hand this 19th day of October, 1909.

Chas. F. Hill  
 Notary Public

Filed in office for record the 20th day of October, 1909 and recorded November 3, 1909

A. W. Owen  
 Judge of Probate

SCALE: 1" = 50'



SIBERT PLAT, FOREST AVENUE

We, Hill & Campbell, Civil Engineers, herby certify that this is a correct map of the lands herein described lying in the NW 1/4 of the SW 1/4 of Sec. 4 T 12 S R 6 E, Etowah County, Alabama as surveyed and plotted by us this 18th day of October, 1909.

Hill and Campbell Engineers

We, W.L. Sibert and wife Mary C. Sibert, S.H. Sibert and wife Emma L. Sibert, Charles S. Blair, Frances E. Sibert, O.W. Sibert and wife Emily W. Sibert, owners of the lands and property herein described herby adopt the within plat as being correct on this 19th day of October, 1909.

Wm. F. Sibert S.H. Sibert Emma L. Sibert O.W. Sibert  
 Mary C. Sibert S.H. Sibert Charles S. Blair Frances E. Sibert Emily W. Sibert

State of Alabama, Etowah County: Notary Public

I, Chas. F. Hill, a Notary Public in and for said State and County herby certify that W.L. Sibert, Mary C. Sibert, S.H. Sibert, Emma L. Sibert, Charles S. Blair, Frances E. Sibert, O.W. Sibert and Emily W. Sibert, whose names are signed to the foregoing declaration, and who are known to me, acknowledged before me on this day that being informed of the contents of the declaration, they executed the same voluntarily on the day same bears date.

Given under my hand this 19th day of October, 1909.

Chas. F. Hill  
 Notary Public

I herby certify that the within plat was filed for record October 22, 1909 - and recorded on 3rd day of November, 1909.

A. W. Owen  
 Judge of Probate

SCALE: 1" = 50'

FOR AMENDMENT SEE 193  
 MISCL 9 Pgs 49457