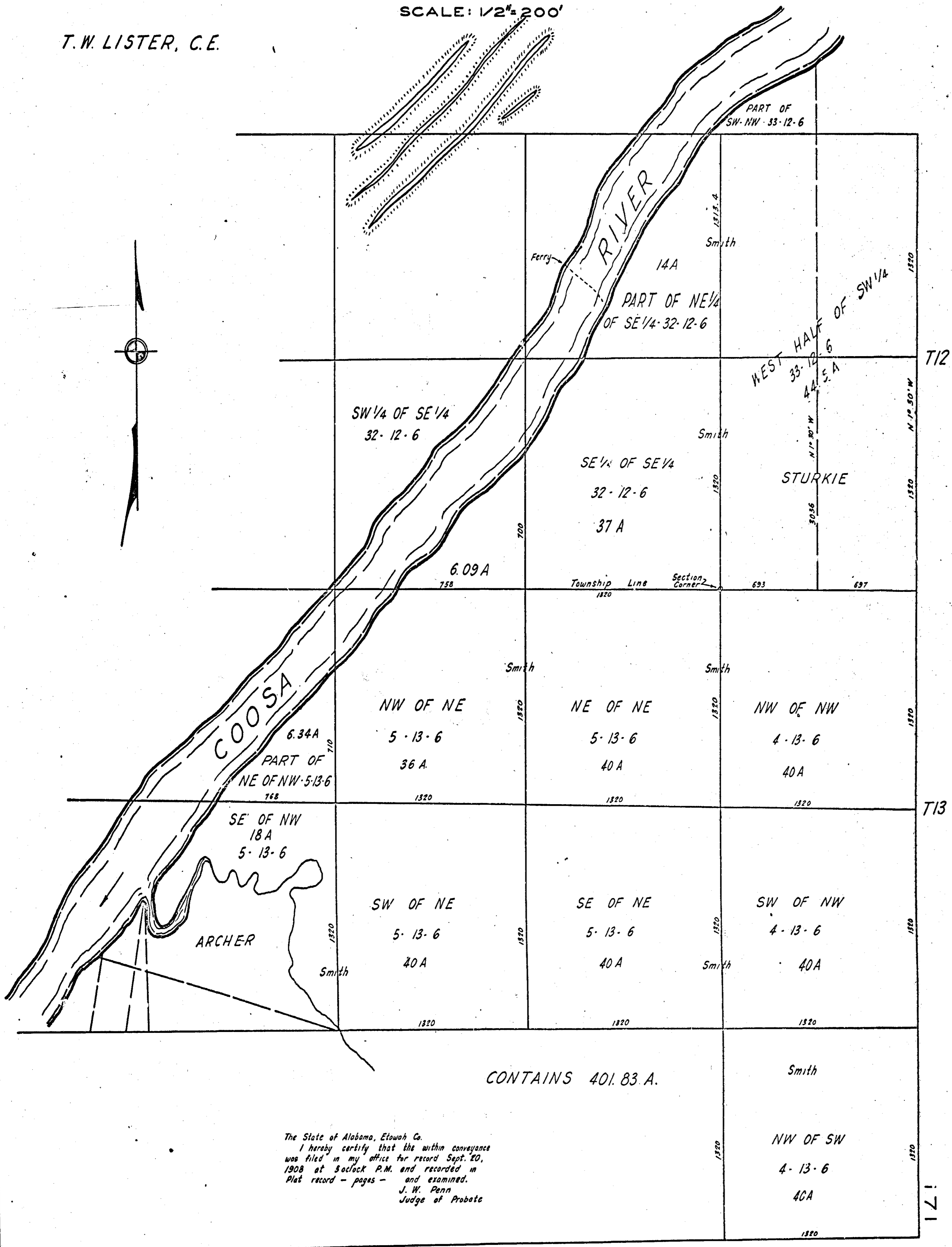


MAP OF
 MARK H SMITH
 AGRICULTURAL & MINERAL LANDS
 5 MILES SO. OF GADSDEN
 EAST OF COOSA RIVER

SCALE: 1/2" = 200'

T.W. LISTER, C.E.



The State of Alabama, Etowah Co.
 I hereby certify that the within conveyance
 was filed in my office for record Sept. 20,
 1908 at 3 o'clock P.M. and recorded in
 Plat record - pages - and examined.
 J. W. Penn
 Judge of Probate