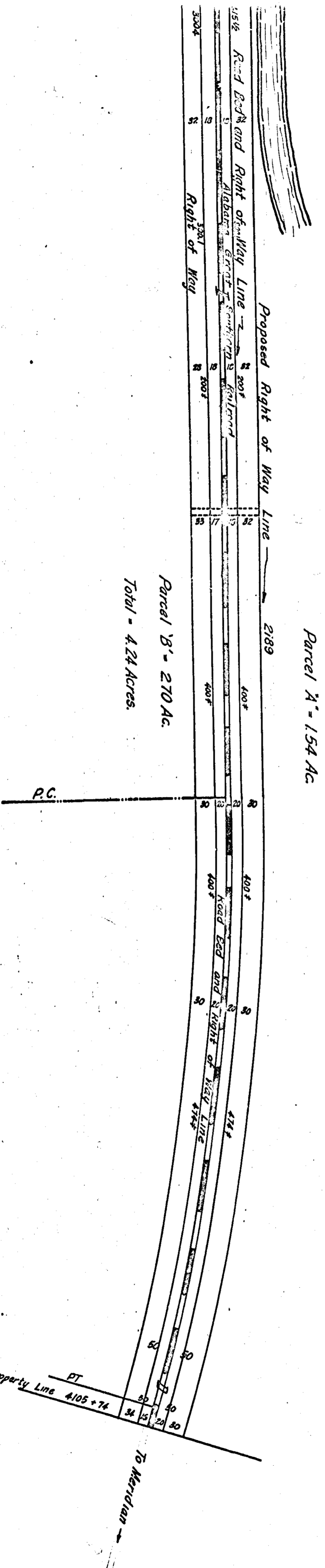


MILES 83 & 84 OF
 ALABAMA GREAT SOUTHERN RAILROAD
 RIGHT OF WAY TO BE REQUIRED
 FROM J. E. GILLILAND
 OFFICE OF ASST ENGINEER OCT. 20, 1914.



FILED IN DEED RECORD
 SCALE: 1"=100'