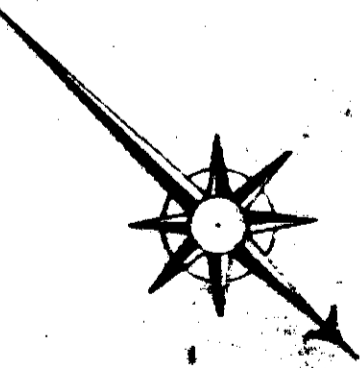


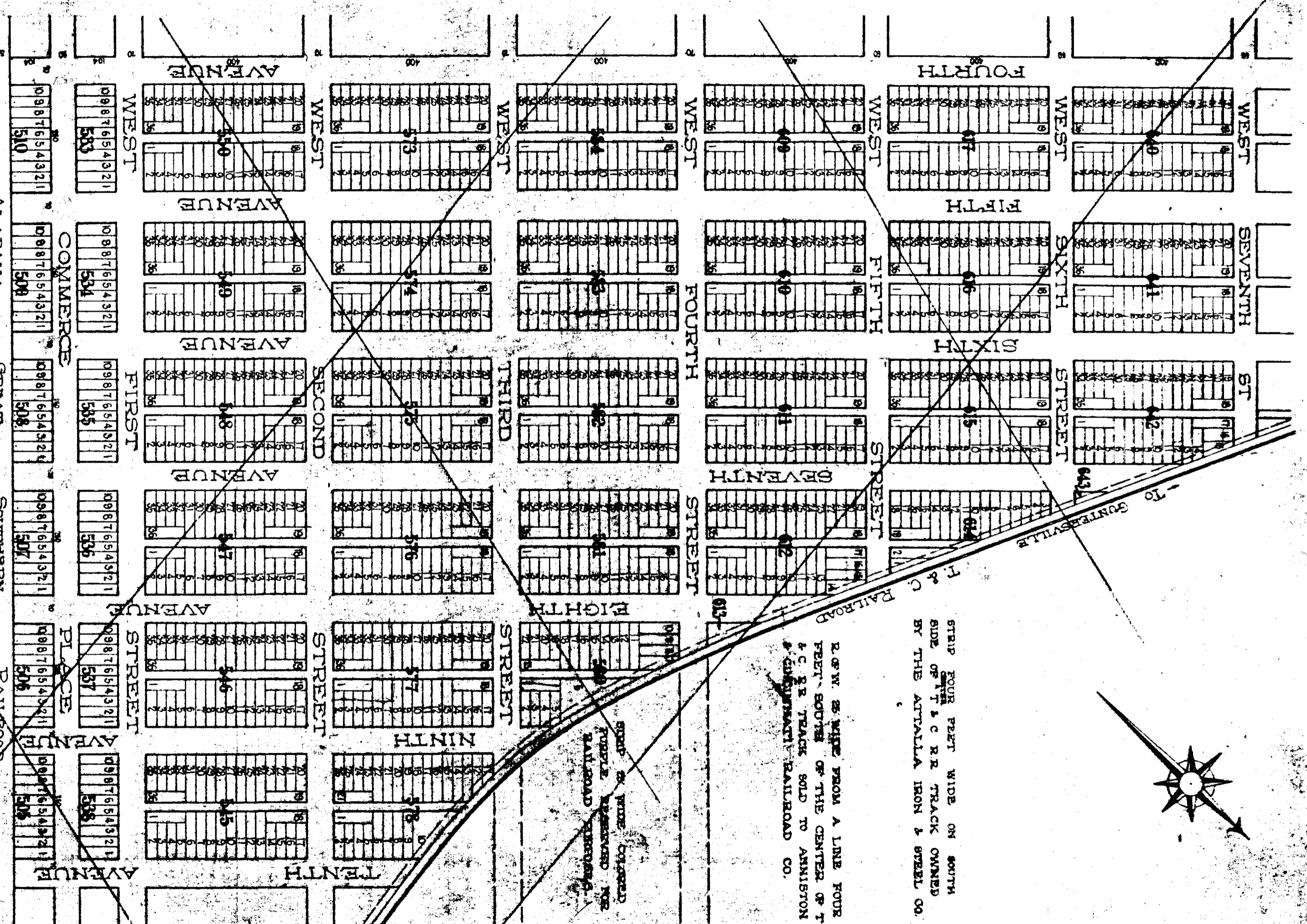
460
H



STRIP FOUR FEET WIDE ON SOUTH
SIDE OF T & C R.R. TRACK OWNED
BY THE ATLANTA IRON & STEEL CO.

R.F.W. & WIFE FROM A LINE FOUR
FEET SOUTH OF THE CENTER OF T
& C R.R. TRACK SOLD TO ANNISTON
& GUNSMITH RAILROAD CO.

STRIP SIX FEET WIDE
FRONT RESERVED FOR
RAILROAD PURPOSES



ALABAMA GREAT SOUTHERN RAILROAD
TRACT SOLD A. G. S. RAILROAD - OCT. 1887