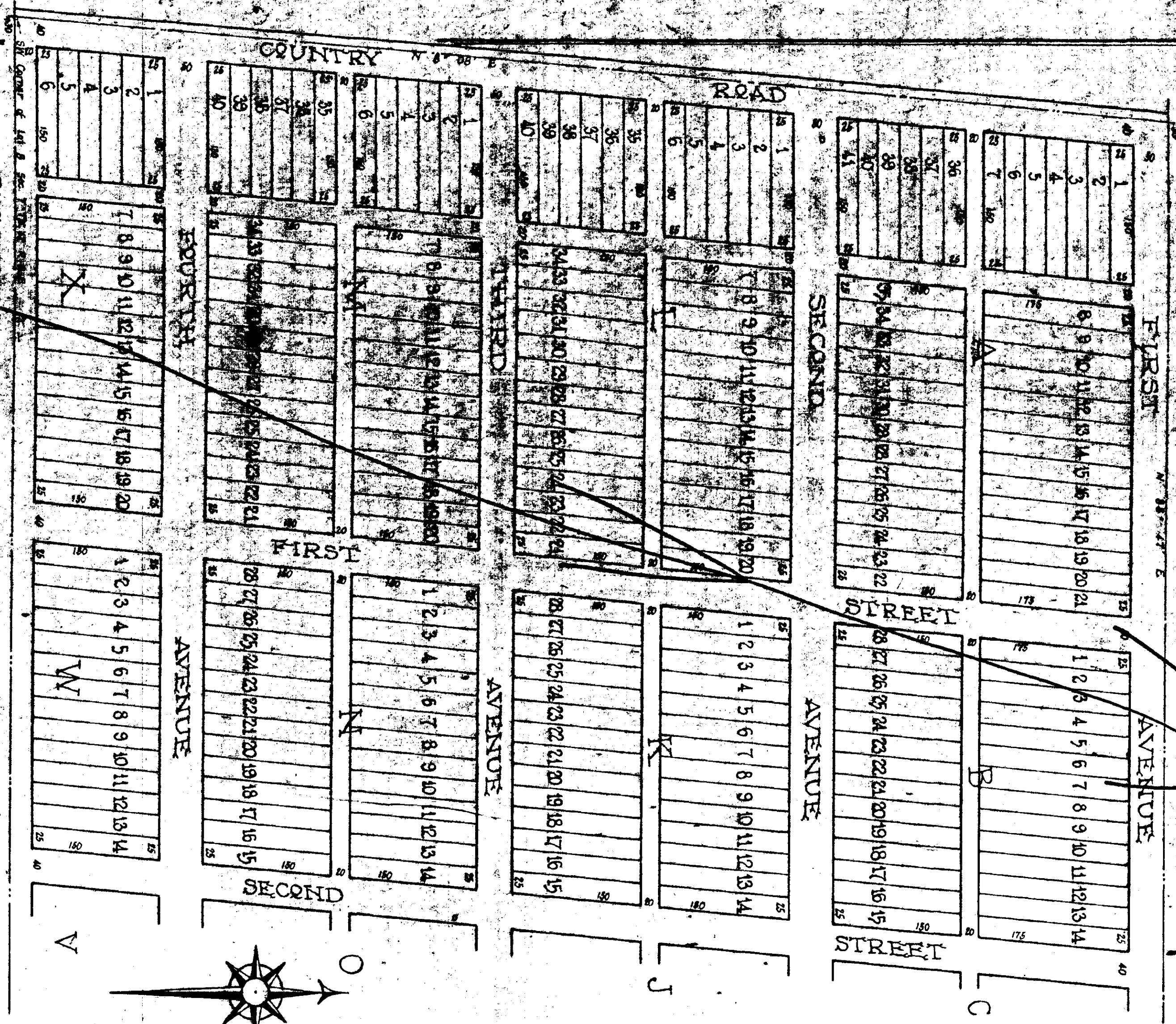


PIONEER LAND AND IMP. CO.

SEE PAGES 291 & 292

For Vacat & Annul See 290
 and "F" - 337



CONTINUED ON PAGE 291

The State of Alabama, Etowah County

I, J. E. Strong, C. E., do hereby certify that this is a true and correct map showing the location of the lots as surveyed by me of Lot no. 8 Sec. 7 T. 22 S. R. 12 W. of the NW 1/4 of the NW 1/4 of Section 8-12-5 situated in Etowah County, Alabama, and owned by the Pioneer Land & Improvement Company.

J. E. Strong, C. E.
 Pioneer Land & Improvement Co.
 President